

**2016 GOVERNOR'S TRIBAL RELATIONS REPORT – AGENCY NARRATIVE REPORTING FORM
(FOR THE REPORTING PERIOD JULY 1, 2015 - JUNE 30, 2016)**

The State-Tribal Relations Report, entitled “Partners in Building a Stronger Montana,” features the State’s cooperative work with tribes in support of the Governor’s vision for greater economic development opportunities, quality health care and education programs, and improving the effectiveness of governmental operations and services across state agencies.

1. SUBMISSION DATE: August 8, 2016
2. STATE AGENCY/DIVISION/PROGRAM: Great Falls College MSU
3. NARRATIVE COORDINATOR NAME: Heidi Pasek PHONE/EMAIL: hpasek@gfcmsu.edu

4. ACTIVITY NAME (name electronic file with this name):
5. PROGRAM STAFF NAME: Sandy Bauman PHONE/EMAIL: sandra.bauman@gfcmsu.edu

6. Select Tribe(s) Involved:

<input checked="" type="checkbox"/> All	<input type="checkbox"/> Fort Belknap
<input type="checkbox"/> Blackfeet	<input type="checkbox"/> Fort Peck
<input type="checkbox"/> Chippewa Cree	<input type="checkbox"/> Little Shell
<input type="checkbox"/> Confederated Salish & Kootenai	<input type="checkbox"/> Northern Cheyenne
<input type="checkbox"/> Crow	

7. Please specify when this state-tribal activity started and if it is ongoing or finalized.

<input type="checkbox"/> Started before FY 2016	<input type="checkbox"/> Started during FY 2016
<input checked="" type="checkbox"/> Ongoing	<input type="checkbox"/> Completed/finalized during FY 2016

In the next sections, please make sure to spell out acronyms. It is also necessary to acknowledge the source when the text, data and photographs were provided by an entity outside of state government.

8. In 1-2 paragraphs, describe the purpose of the activity, its significance, major accomplishments, and overall impact. Please include a brief description of the state program and its contribution to the activity, and include timelines, cost, location, other partners, etc.

Since 2012, Great Falls College MSU has housed the Native American Enrichment Center, a physical gathering place for Native American students to gather, study and network. The college also hosts events to welcome Native American students to the center and to celebrate Native American week. The center and these events have two major goals: to give Native American students the tools they need to succeed in college and to raise awareness of Native American culture among students, staff and the community.

The Bureau of Labor Statistics reports that workers with an associate degree earn a weekly median of \$798, compared to \$678 for workers with a high school education and \$493 for those with less than a high school education. (http://www.bls.gov/emp/ep_chart_001.htm. Accessed 3/21/2016). Great Falls College MSU believes that the best tool for Native Americans to rise out of poverty is for more of them to obtain a college credential.

Statistics tells a compelling story about the barriers Native Americans face in overcoming poverty:

- *28.4% of American Indians live below the poverty line (2010 US Census data) nationally, in Montana it is 55.6%. (<http://factfinder.census.gov/faces/tableservices/jsf/pages/productview.xhtml?src=CF>)*

**2016 GOVERNOR'S TRIBAL RELATIONS REPORT – AGENCY NARRATIVE REPORTING FORM
(FOR THE REPORTING PERIOD JULY 1, 2015 - JUNE 30, 2016)**

- *Great Falls College 7.2% of student population American Indian*
[\(<http://mus.edu/data/AmInd/MUS%20Am%20Indian%20Enrollment%202001-2015.pdf>\)](http://mus.edu/data/AmInd/MUS%20Am%20Indian%20Enrollment%202001-2015.pdf)
- *Retention rate of American Indian students at GFC MSU is 43.1% which is lower than that of MT 2-year institution average of 48%* (<http://mus.edu/data/AmInd/MUS-AmIndianRetention2015.pdf>)
- *Great Falls College MSU's graduation rate for the 2008 cohort of American Indian students was 13%, most recent published data* (<http://mus.edu/data/diversity/DR%202009%20-%20Grad%20Rates%202-yr.pdf>)

9. If available, provide noteworthy data regarding the impact of your program on tribal communities, such as the number of American Indian people served, jobs created in Indian Country, leveraged funds stimulating economic development, etc.

See attached report.

10. Are there photographs to support the narrative? (X) Yes () No
Please submit photographs in JPEG format, in high resolution (300 DPI). List below the name of each photo file below and specify with the related caption and photo credit.

Photo File Name: Flags in NAEC, Flags in NAEC 2, Scholars at MSU for Training, Scholars at MSU for Training 2, Spring 2016 Native American Scholars

Photo Caption (include the name of the event/persons, location, and date):

Photo Credit: Great Falls College MSU

12. Do you have any suggestions on how to improve the Governor's Tribal Relations Report?

Native American Student Report

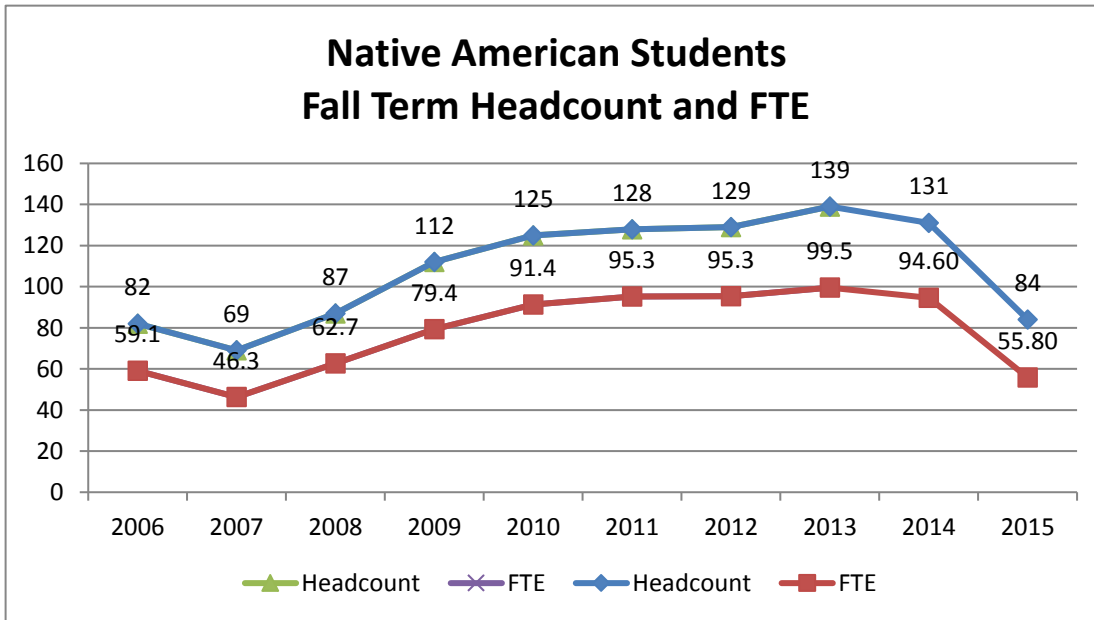
Method

This report is produced using Enrollment and Course warehouse files for students with an ethnic code of "Indian". Success for this report is defined as an A, B, C, P, or CR grade.

Summary -

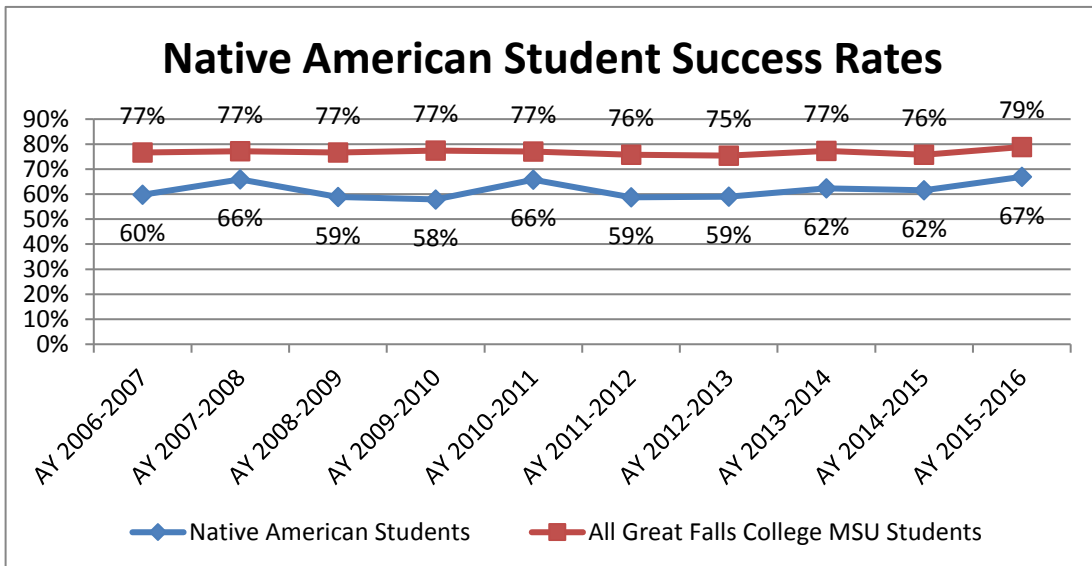
Increased Enrollment

- After years of slow but stable enrollment growth, enrollment of Native American students decreased for fall 2015. Fall term headcount decreased by 47 students (a decrease of 36%) and FTE decreased by 38.8 FTE (a decrease of 41%).



Lower Success Rates -

The success rates for Native American students have been consistently lower than the overall average for all Great Falls students. Differences have ranged from **11%** lower in academic years 2007-2008 and 2010-2011 to almost **20%** lower in academic year 2009-2010. The success rate is roughly **12%** lower in the 2015-2016 academic year.



Demographics - Younger Students

- In the past, Native American students have been **younger** on average than all Great Falls students during fall 2008 to 2010. However their average age is currently **30.4** years, compared to **27.2** years for all students. This is a shift from prior years. **Seventy percent** of all Native American students were from Cascade County.
- More Native American students were enrolled in the Health Sciences division (36 students) in fall 2015, than in either of the other divisions. Only one program had more than 10 Native American students enrolled that term: General Education (22 students).

For More Information

Additional information can be found in:

Enrollment by Ethnicity

This report is produced by the Office of Institutional Research. Questions on the content or interpretation of this report should be directed to:

Grace L. Anderson, Ph.D.
grace.anderson3@gfcmu.edu
(406) 771-4399

Great Falls College Office of Institutional Research
 Native American Enrollment by Student Type (excluding Bozeman campus)

2006-07 Academic Year			Summer 2006 (EOT)				Fall 2006 (EOT)				Spring 2007 (EOT)			
Student Type			Count	% FT/PT	FTE	Credit Hours	Count	% FT/PT	FTE	Credit Hours	Count	% FT/PT	FTE	Credit Hours
N	New	Full-Time	0	0.0%	0.00	0	16	72.7%	13.53	203	4	66.7%	4.27	64
		Part-Time	6	100.0%	2.40	36	6	27.3%	3.07	46	2	33.3%	0.60	9
		Total	6	100.0%	2.40	36	22	100.0%	16.60	249	6	100.0%	4.87	73
C	Continuing	Full-Time	1	4.3%	0.87	13	22	61.1%	19.67	295	36	60.0%	32.53	488
		Part-Time	22	95.7%	9.73	146	14	38.9%	6.00	90	24	40.0%	11.87	178
		Total	23	100.0%	10.60	159	36	100.0%	25.67	385	60	100.0%	44.40	666
R	Returning	Full-Time	0	0.0%	0.00	0	8	72.7%	6.87	103	1	50.0%	0.80	12
		Part-Time	1	100.0%	0.40	6	3	27.3%	1.13	17	1	50.0%	0.67	10
		Total	1	100.0%	0.40	6	11	100.0%	8.00	120	2	100.0%	1.47	22
S	Special	Full-Time	0	---	0.00	0	0	0.0%	0.00	0	0	---	0.00	0
		Part-Time	0	---	0.00	0	3	100.0%	0.60	9	0	---	0.00	0
		Total	0	---	0.00	0	3	100.0%	0.60	9	0	---	0.00	0
T	Transfer	Full-Time	0	0.0%	0.00	0	9	90.0%	7.80	117	4	66.7%	3.47	52
		Part-Time	4	100.0%	1.53	23	1	10.0%	0.47	7	2	33.3%	0.80	12
		Total	4	100.0%	1.53	23	10	100.0%	8.27	124	6	100.0%	4.27	64
	Total	Full-Time	1	2.9%	0.87	13	55	67.1%	47.87	718	45	60.8%	41.07	616
		Part-Time	33	97.1%	14.07	211	27	32.9%	11.27	169	29	39.2%	13.93	209
		Total	34	100.0%	14.93	224	82	100.0%	59.13	887	74	100.0%	55.00	825

Note: This report excludes students of type "E" - Professional and Continuing Education.

Great Falls College Office of Institutional Research
 Native American Enrollment by Student Type (excluding Bozeman campus)

2007-08 Academic Year			Summer 2007 (EOT)				Fall 2007 (EOT)				Spring 2008 (EOT)			
Student Type			Count	% FT/PT	FTE	Credit Hours	Count	% FT/PT	FTE	Credit Hours	Count	% FT/PT	FTE	Credit Hours
N	New	Full-Time	0	---	0.00	0	12	63.2%	10.80	162	4	44.4%	3.40	51
		Part-Time	0	---	0.00	0	7	36.8%	3.47	52	5	55.6%	2.27	34
		Total	0	---	0.00	0	19	100.0%	14.27	214	9	100.0%	5.67	85
C	Continuing	Full-Time	1	5.0%	0.87	13	14	45.2%	11.87	178	25	55.6%	22.33	335
		Part-Time	19	95.0%	7.60	114	17	54.8%	8.27	124	20	44.4%	8.47	127
		Total	20	100.0%	8.47	127	31	100.0%	20.13	302	45	100.0%	30.80	462
R	Returning	Full-Time	0	0.0%	0.00	0	2	25.0%	1.60	24	8	72.7%	6.93	104
		Part-Time	1	100.0%	0.47	7	6	75.0%	3.07	46	3	27.3%	1.33	20
		Total	1	100.0%	0.47	7	8	100.0%	4.67	70	11	100.0%	8.27	124
S	Special	Full-Time	0	---	0.00	0	0	0.0%	0.00	0	0	0.0%	0.00	0
		Part-Time	0	---	0.00	0	1	100.0%	0.27	4	1	100.0%	0.20	3
		Total	0	---	0.00	0	1	100.0%	0.27	4	1	100.0%	0.20	3
T	Transfer	Full-Time	0	0.0%	0.00	0	6	60.0%	5.00	75	3	50.0%	2.47	37
		Part-Time	2	100.0%	0.67	10	4	40.0%	1.93	29	3	50.0%	1.20	18
		Total	2	100.0%	0.67	10	10	100.0%	6.93	104	6	100.0%	3.67	55
Total		Full-Time	1	4.3%	0.87	13	34	49.3%	29.27	439	40	55.6%	35.13	527
		Part-Time	22	95.7%	8.73	131	35	50.7%	17.00	255	32	44.4%	13.47	202
		Total	23	100.0%	9.60	144	69	100.0%	46.27	694	72	100.0%	48.60	729

Note: This report excludes students of type "E" - Professional and Continuing Education.

Great Falls College Office of Institutional Research
 Native American Enrollment by Student Type (excluding Bozeman campus)

2008-09 Academic Year			Summer 2008 (EOT)				Fall 2008 (EOT)				Spring 2009 (EOT)			
Student Type			Count	% FT/PT	FTE	Credit Hours	Count	% FT/PT	FTE	Credit Hours	Count	% FT/PT	FTE	Credit Hours
N	New	Full-Time	0	0.0%	0.00	0	12	63.2%	10.80	162	6	66.7%	5.73	86
		Part-Time	5	100.0%	2.13	32	7	36.8%	3.73	56	3	33.3%	1.47	22
		Total	5	100.0%	2.13	32	19	100.0%	14.53	218	9	100.0%	7.20	108
C	Continuing	Full-Time	0	0.0%	0.00	0	16	59.3%	13.80	207	27	58.7%	25.67	385
		Part-Time	14	100.0%	4.93	74	11	40.7%	5.20	78	19	41.3%	10.33	155
		Total	14	100.0%	4.93	74	27	100.0%	19.00	285	46	100.0%	36.00	540
R	Returning	Full-Time	0	0.0%	0.00	0	11	55.0%	9.73	146	4	26.7%	3.33	50
		Part-Time	6	100.0%	2.20	33	9	45.0%	4.53	68	11	73.3%	5.87	88
		Total	6	100.0%	2.20	33	20	100.0%	14.27	214	15	100.0%	9.20	138
S	Special	Full-Time	0	---	0.00	0	0	0.0%	0.00	0	0	0.0%	0.00	0
		Part-Time	0	---	0.00	0	3	100.0%	0.67	10	2	100.0%	0.80	12
		Total	0	---	0.00	0	3	100.0%	0.67	10	2	100.0%	0.80	12
T	Transfer	Full-Time	0	0.0%	0.00	0	13	72.2%	11.27	169	6	54.5%	5.13	77
		Part-Time	3	100.0%	1.33	20	5	27.8%	3.00	45	5	45.5%	1.67	25
		Total	3	100.0%	1.33	20	18	100.0%	14.27	214	11	100.0%	6.80	102
Total		Full-Time	0	0.0%	0.00	0	52	59.8%	45.60	684	43	51.8%	39.87	598
		Part-Time	28	100.0%	10.60	159	35	40.2%	17.13	257	40	48.2%	20.13	302
		Total	28	100.0%	10.60	159	87	100.0%	62.73	941	83	100.0%	60.00	900

Note: This report excludes students of type "E" - Professional and Continuing Education.

Great Falls College Office of Institutional Research
 Native American Enrollment by Student Type (excluding Bozeman campus)

2009-10 Academic Year			Summer 2009 (EOT)				Fall 2009 (EOT)				Spring 2010 (EOT)			
Student Type			Count	% FT/PT	FTE	Credit Hours	Count	% FT/PT	FTE	Credit Hours	Count	% FT/PT	FTE	Credit Hours
N	New	Full-Time	1	14.3%	0.80	12	15	65.2%	13.87	208	11	64.7%	9.40	141
		Part-Time	6	85.7%	2.80	42	8	34.8%	4.67	70	6	35.3%	3.67	55
		Total	7	100.0%	3.60	54	23	100.0%	18.53	278	17	100.0%	13.07	196
C	Continuing	Full-Time	0	0.0%	0.00	0	23	50.0%	20.60	309	46	65.7%	41.73	626
		Part-Time	16	100.0%	7.47	112	23	50.0%	12.67	190	24	34.3%	12.33	185
		Total	16	100.0%	7.47	112	46	100.0%	33.27	499	70	100.0%	54.07	811
R	Returning	Full-Time	0	0.0%	0.00	0	14	60.9%	12.07	181	6	35.3%	4.93	74
		Part-Time	5	100.0%	1.93	29	9	39.1%	4.13	62	11	64.7%	4.73	71
		Total	5	100.0%	1.93	29	23	100.0%	16.20	243	17	100.0%	9.67	145
S	Special	Full-Time	0	---	0.00	0	0	0.0%	0.00	0	0	0.0%	0.00	0
		Part-Time	0	---	0.00	0	6	100.0%	1.53	23	2	100.0%	0.60	9
		Total	0	---	0.00	0	6	100.0%	1.53	23	2	100.0%	0.60	9
T	Transfer	Full-Time	0	0.0%	0.00	0	9	64.3%	8.13	122	4	36.4%	3.60	54
		Part-Time	2	100.0%	0.13	2	5	35.7%	1.73	26	7	63.6%	1.93	29
		Total	2	100.0%	0.13	2	14	100.0%	9.87	148	11	100.0%	5.53	83
Total		Full-Time	1	3.3%	0.80	12	61	54.5%	54.67	820	67	57.3%	59.67	895
		Part-Time	29	96.7%	12.33	185	51	45.5%	24.73	371	50	42.7%	23.27	349
		Total	30	100.0%	13.13	197	112	100.0%	79.40	1,191	117	100.0%	82.93	1,244

Note: This report excludes students of type "E" - Professional and Continuing Education.

Great Falls College Office of Institutional Research
Native American Enrollment by Student Type (excluding Bozeman campus)

2010-11 Academic Year			Summer 2010 (EOT)				Fall 2010 (EOT)				Spring 2011 (EOT)			
Student Type			Count	% FT/PT	FTE	Credit Hours	Count	% FT/PT	FTE	Credit Hours	Count	% FT/PT	FTE	Credit Hours
N	New	Full-Time	0	0.0%	0.00	0	15	75.0%	14.20	213	1	12.5%	1.07	16
		Part-Time	4	100.0%	1.93	29	5	25.0%	2.67	40	7	87.5%	3.60	54
		Total	4	100.0%	1.93	29	20	100.0%	16.87	253	8	100.0%	4.67	70
C	Continuing	Full-Time	0	0.0%	0.00	0	36	59.0%	32.47	487	57	67.1%	52.07	781
		Part-Time	28	100.0%	11.67	175	25	41.0%	12.47	187	28	32.9%	13.87	208
		Total	28	100.0%	11.67	175	61	100.0%	44.93	674	85	100.0%	65.93	989
R	Returning	Full-Time	0	0.0%	0.00	0	12	52.2%	10.53	158	14	73.7%	12.00	180
		Part-Time	10	100.0%	4.00	60	11	47.8%	5.73	86	5	26.3%	2.53	38
		Total	10	100.0%	4.00	60	23	100.0%	16.27	244	19	100.0%	14.53	218
S	Special	Full-Time	0	---	0.00	0	0	0.0%	0.00	0	0	0.0%	0.00	0
		Part-Time	0	---	0.00	0	5	100.0%	1.20	18	2	100.0%	0.60	9
		Total	0	---	0.00	0	5	100.0%	1.20	18	2	100.0%	0.60	9
T	Transfer	Full-Time	0	0.0%	0.00	0	9	56.3%	8.47	127	7	70.0%	6.07	91
		Part-Time	5	100.0%	1.53	23	7	43.8%	3.67	55	3	30.0%	1.53	23
		Total	5	100.0%	1.53	23	16	100.0%	12.13	182	10	100.0%	7.60	114
Total	Total	Full-Time	0	0.0%	0.00	0	72	57.6%	65.67	985	79	63.7%	71.20	1,068
		Part-Time	47	100.0%	19.13	287	53	42.4%	25.73	386	45	36.3%	22.13	332
		Total	47	100.0%	19.13	287	125	100.0%	91.40	1,371	124	100.0%	93.33	1,400

Note: This report excludes students of type "E" - Professional and Continuing Education.

Great Falls College Office of Institutional Research
Native American Enrollment by Student Type

2011-12 Academic Year			Summer 2011 (EOT)				Fall 2011 (EOT)				Spring 2012 (EOT)			
Student Type			Count	% FT/PT	FTE	Credit Hours	Count	% FT/PT	FTE	Credit Hours	Count	% FT/PT	FTE	Credit Hours
N	New	Full-Time	0	0.0%	0.00	0	25	80.6%	22.00	330	7	41.2%	5.87	88
		Part-Time	3	100.0%	1.40	21	6	19.4%	3.20	48	10	58.8%	6.33	95
		Total	3	100.0%	1.40	21	31	100.0%	25.20	378	17	100.0%	12.20	183
C	Continuing	Full-Time	1	2.3%	0.93	14	36	60.0%	31.20	468	60	63.2%	52.93	794
		Part-Time	43	97.7%	17.47	262	24	40.0%	12.40	186	35	36.8%	18.40	276
		Total	44	100.0%	18.40	276	60	100.0%	43.60	654	95	100.0%	71.33	1,070
R	Returning	Full-Time	0	0.0%	0.00	0	8	47.1%	7.07	106	4	28.6%	3.47	52
		Part-Time	8	100.0%	3.13	47	9	52.9%	5.20	78	10	71.4%	5.67	85
		Total	8	100.0%	3.13	47	17	100.0%	12.27	184	14	100.0%	9.13	137
S	Special	Full-Time	0	---	0.00	0	0	---	0.00	0	0	---	0.00	0
		Part-Time	0	---	0.00	0	0	---	0.00	0	0	---	0.00	0
		Total	0	---	0.00	0	0	---	0.00	0	0	---	0.00	0
H	High School	Full-Time	0	---	0.00	0	0	---	0.00	0	0	0.0%	0.00	0
		Part-Time	0	---	0.00	0	0	---	0.00	0	1	100.0%	0.20	3
		Total	0	---	0.00	0	0	---	0.00	0	1	100.0%	0.20	3
T	Transfer	Full-Time	0	0.0%	0.00	0	10	50.0%	8.60	129	3	37.5%	2.53	38
		Part-Time	3	100.0%	0.67	10	10	50.0%	5.60	84	5	62.5%	1.40	21
		Total	3	100.0%	0.67	10	20	100.0%	14.20	213	8	100.0%	3.93	59
Total	Total	Full-Time	1	1.7%	0.93	14	79	61.7%	68.87	1,033	74	54.8%	64.80	972
		Part-Time	57	98.3%	22.67	340	49	38.3%	26.40	396	61	45.2%	32.00	480
		Total	58	100.0%	23.60	354	128	100.0%	95.27	1,429	135	100.0%	96.80	1,452

Note: This report excludes students of type "E" - Professional and Continuing Education.
A new student type of "H" for High School students became effective in Spring 2012

Great Falls College Office of Institutional Research
Native American Enrollment by Student Type

2012-13 Academic Year			Summer 2012 (EOT)				Fall 2012 (EOT)				Spring 2013 (EOT)			
Student Type			Count	% FT/PT	FTE	Credit Hours	Count	% FT/PT	FTE	Credit Hours	Count	% FT/PT	FTE	Credit Hours
N	New	Full-Time	1	14.3%	0.87	13	17	63.0%	14.60	219	9	56.3%	8.13	122
		Part-Time	6	85.7%	2.27	34	10	37.0%	6.07	91	7	43.8%	3.13	47
		Total	7	100.0%	3.13	47	27	100.0%	20.67	310	16	100.0%	11.27	169
C	Continuing	Full-Time	1	3.0%	0.93	14	47	61.0%	41.33	620	52	53.6%	45.73	686
		Part-Time	32	97.0%	12.93	194	30	39.0%	15.20	228	45	46.4%	24.87	373
		Total	33	100.0%	13.87	208	77	100.0%	56.53	848	97	100.0%	70.60	1,059
R	Returning	Full-Time	0	0.0%	0.00	0	6	66.7%	5.40	81	4	40.0%	3.47	52
		Part-Time	6	100.0%	2.60	39	3	33.3%	1.33	20	6	60.0%	3.07	46
		Total	6	100.0%	2.60	39	9	100.0%	6.73	101	10	100.0%	6.53	98
S	Special	Full-Time	0	---	0.00	0	0	---	0.00	0	0	---	0.00	0
		Part-Time	0	---	0.00	0	0	---	0.00	0	0	---	0.00	0
		Total	0	---	0.00	0	0	---	0.00	0	0	---	0.00	0
H	High School	Full-Time	0	---	0.00	0	0	---	0.00	0	0	0.0%	0.00	0
		Part-Time	0	---	0.00	0	0	---	0.00	0	4	100.0%	1.13	17
		Total	0	---	0.00	0	0	---	0.00	0	4	100.0%	1.13	17
T	Transfer	Full-Time	0	---	0.00	0	9	56.3%	8.60	129	5	55.6%	4.47	67
		Part-Time	0	---	0.00	0	7	43.8%	2.80	42	4	44.4%	2.00	30
		Total	0	---	0.00	0	16	100.0%	11.40	171	9	100.0%	6.47	97
Total	Total	Full-Time	2	4.3%	1.80	27	79	61.2%	69.93	1,049	70	51.5%	61.80	927
		Part-Time	44	95.7%	17.80	267	50	38.8%	25.40	381	66	48.5%	34.20	513
		Total	46	100.0%	19.60	294	129	100.0%	95.33	1,430	136	100.0%	96.00	1,440

Note: This report excludes students of type "E" - Professional and Continuing Education.

Great Falls College Office of Institutional Research
Native American Enrollment by Student Type

2013-14 Academic Year			Summer 2013 (EOT)				Fall 2013 (EOT)				Spring 2014 (EOT)			
Student Type			Count	% FT/PT	FTE	Credit Hours	Count	% FT/PT	FTE	Credit Hours	Count	% FT/PT	FTE	Credit Hours
N	New	Full-Time	2	28.6%	2.00	30	15	60.0%	14.20	213	5	45.5%	4.93	74
		Part-Time	5	71.4%	1.80	27	10	40.0%	5.47	82	6	54.5%	2.80	42
		Total	7	100.0%	3.80	57	25	100.0%	19.67	295	11	100.0%	7.73	116
C	Continuing	Full-Time	5	13.9%	4.33	65	41	49.4%	36.40	546	51	53.7%	46.53	698
		Part-Time	31	86.1%	12.07	181	42	50.6%	22.60	339	44	46.3%	22.87	343
		Total	36	100.0%	16.40	246	83	100.0%	59.00	885	95	100.0%	69.40	1,041
R	Returning	Full-Time	0	0.0%	0.00	0	4	33.3%	3.53	53	5	38.5%	4.13	62
		Part-Time	7	100.0%	3.33	50	8	66.7%	4.73	71	8	61.5%	4.00	60
		Total	7	100.0%	3.33	50	12	100.0%	8.27	124	13	100.0%	8.13	122
S	Special	Full-Time	0	---	0.00	0	0	---	0.00	0	0	---	0.00	0
		Part-Time	0	---	0.00	0	0	---	0.00	0	0	---	0.00	0
		Total	0	---	0.00	0	0	---	0.00	0	0	---	0.00	0
H	High School	Full-Time	0	0.0%	0.00	0	0	0.0%	0.00	0	0	0.0%	0.00	0
		Part-Time	1	100.0%	0.20	3	2	100.0%	0.40	6	7	100.0%	2.00	30
		Total	1	100.0%	0.20	3	2	100.0%	0.40	6	7	100.0%	2.00	30
T	Transfer	Full-Time	0	0.0%	0.00	0	9	52.9%	8.07	121	6	50.0%	5.20	78
		Part-Time	5	100.0%	2.47	37	8	47.1%	4.13	62	6	50.0%	3.00	45
		Total	5	100.0%	2.47	37	17	100.0%	12.20	183	12	100.0%	8.20	123
Total	Total	Full-Time	7	12.5%	6.33	95	69	49.6%	62.20	933	67	48.6%	60.80	912
		Part-Time	49	87.5%	19.87	298	70	50.4%	37.33	560	71	51.4%	34.67	520
		Total	56	100.0%	26.20	393	139	100.0%	99.53	1,493	138	100.0%	95.47	1,432

Note: This report excludes students of type "E" - Professional and Continuing Education.

Great Falls College Office of Institutional Research
Native American Enrollment by Student Type

2014-15 Academic Year			Summer 2014 (EOT)				Fall 2014 (EOT)				Spring 2015 (EOT)			
Student Type			Count	% FT/PT	FTE	Credit Hours	Count	% FT/PT	FTE	Credit Hours	Count	% FT/PT	FTE	Credit Hours
N	New	Full-Time	1	25.0%	1.07	16	15	57.7%	14.53	218	2	25.0%	2.07	31
		Part-Time	3	75.0%	1.13	17	11	42.3%	6.53	98	6	75.0%	3.73	56
		Total	4	100.0%	2.20	33	26	100.0%	21.07	316	8	100.0%	5.80	87
C	Continuing	Full-Time	6	20.7%	5.53	83	37	56.9%	33.00	495	49	58.3%	44.33	665
		Part-Time	23	79.3%	10.47	157	28	43.1%	15.07	226	35	41.7%	19.13	287
		Total	29	100.0%	16.00	240	65	100.0%	48.07	721	84	100.0%	63.47	952
R	Returning	Full-Time	0	0.0%	0.00	0	5	31.3%	4.87	73	8	80.0%	7.07	106
		Part-Time	1	100.0%	0.20	3	11	68.8%	5.67	85	2	20.0%	1.13	17
		Total	1	100.0%	0.20	3	16	100.0%	10.53	158	10	100.0%	8.20	123
S	Special	Full-Time	0	---	0.00	0	0	---	0.00	0	0	---	0.00	0
		Part-Time	0	---	0.00	0	0	---	0.00	0	0	---	0.00	0
		Total	0	---	0.00	0	0	---	0.00	0	0	---	0.00	0
H	High School	Full-Time	0	---	0.00	0	0	---	0.00	0	0	0.0%	0.00	0
		Part-Time	0	---	0.00	0	6	100.0%	1.33	20	9	100.0%	2.67	40
		Total	0	---	0.00	0	6	100.0%	1.33	20	9	100.0%	2.67	40
T	Transfer	Full-Time	2	33.3%	1.80	27	10	55.6%	9.33	140	4	44.4%	3.67	55
		Part-Time	4	66.7%	1.47	22	8	44.4%	4.27	64	5	55.6%	2.13	32
		Total	6	100.0%	3.27	49	18	100.0%	13.60	204	9	100.0%	5.80	87
Total	Total	Full-Time	9	22.5%	8.40	126	67	51.1%	61.73	926	63	52.5%	57.13	857
		Part-Time	31	77.5%	13.27	199	64	48.9%	32.87	493	57	47.5%	28.80	432
		Total	40	100.0%	21.67	325	131	100.0%	94.60	1,419	120	100.0%	85.93	1,289

Note: This report excludes students of type "E" - Professional and Continuing Education.

Great Falls College Office of Institutional Research
Native American Enrollment by Student Type

2015-16 Academic Year			Summer 2015 (EOT)				Fall 2015 (EOT)				Spring 2016 (EOT)			
Student Type			Count	% FT/PT	FTE	Credit Hours	Count	% FT/PT	FTE	Credit Hours	Count	% FT/PT	FTE	Credit Hours
N	New	Full-Time	0	#DIV/0!	0.00	0	4	57.1%	3.93	59	6	60.0%	5.53	83
		Part-Time	0	#DIV/0!	0.00	0	3	42.9%	1.53	23	4	40.0%	2.33	35
		Total	0	#DIV/0!	0.00	0	7	100.0%	5.47	82	10	100.0%	7.87	118
C	Continuing	Full-Time	3	13.6%	3.07	46	28	56.0%	25.20	378	29	54.7%	26.20	393
		Part-Time	19	86.4%	7.40	111	22	44.0%	9.80	147	24	45.3%	10.67	160
		Total	22	100.0%	10.47	157	50	100.0%	35.00	525	53	100.0%	36.87	553
R	Returning	Full-Time	1	25.0%	0.87	13	3	27.3%	2.40	36	9	50.0%	7.93	119
		Part-Time	3	75.0%	1.20	18	8	72.7%	3.80	57	9	50.0%	3.60	54
		Total	4	100.0%	2.07	31	11	100.0%	6.20	93	18	100.0%	11.53	173
S	Special	Full-Time	0	---	0.00	0	0	---	0.00	0	0	---	0.00	0
		Part-Time	0	---	0.00	0	0	---	0.00	0	0	---	0.00	0
		Total	0	---	0.00	0	0	---	0.00	0	0	---	0.00	0
H	High School	Full-Time	0	---	0.00	0	1	---	1.07	16	1	6.3%	1.07	16
		Part-Time	0	---	0.00	0	6	85.7%	1.07	16	15	93.8%	4.93	74
		Total	0	---	0.00	0	7	85.7%	2.13	32	16	100.0%	6.00	90
T	Transfer	Full-Time	0	0.0%	0.00	0	6	66.7%	5.33	80	3	50.0%	2.93	44
		Part-Time	2	100.0%	0.67	10	3	33.3%	1.67	25	3	50.0%	1.40	21
		Total	2	100.0%	0.67	10	9	100.0%	7.00	105	6	100.0%	4.33	65
Total	Total	Full-Time	4	14.3%	3.93	59	42	50.0%	37.93	569	48	46.6%	43.67	655
		Part-Time	24	85.7%	9.27	139	42	50.0%	17.87	268	55	53.4%	22.93	344
		Total	28	100.0%	13.20	198	84	100.0%	55.80	837	103	100.0%	66.60	999

Note: This report excludes students of type "E" - Professional and Continuing Education.

Great Falls College Office of Institutional Research
Native American Enrollment by Division and Program

2006-07 Academic Year Division/Program	Summer 2006 (EOT)			Fall 2006 (EOT)			Spring 2007 (EOT)		
	Count	FTE	Credit Hours	Count	FTE	Credit Hours	Count	FTE	Credit Hours
Developmental Education & Transfer (Arts & Sciences)									
AAEN Education MSU Northern Track	0	0.00	0	1	0.40	6	1	0.40	6
AAEE Elementary Education	1	0.47	7	0	0.00	0	0	0.00	0
GNED General Education	9	4.00	60	25	17.40	261	26	18.87	283
ASPN Pre Nursing - transfer	0	0.00	0	1	0.87	13	0	0.00	0
ASBL Transfer to MSU-Billings	1	0.60	9	0	0.00	0	0	0.00	0
Total - Dev Ed & Transfer (A&S)	11	5.07	76	27	18.67	280	27	19.27	289
Business, Trades & Technology									
ACCT Accounting	0	0.00	0	0	0.00	0	1	0.87	13
ADAS Administrative Assistant	0	0.00	0	1	0.87	13	1	0.87	13
ATTN Attorney's Assistant	1	0.40	6	0	0.00	0	0	0.00	0
AUTO Auto Body Repair & Refinishing	2	1.27	19	4	3.20	48	4	3.47	52
BMGT Business Mgt/Entrepreneurship	3	1.40	21	8	6.47	97	8	5.13	77
MICR CIT - Microcomputer Support	0	0.00	0	3	2.13	32	1	0.67	10
NETW CIT - Network Support	1	0.20	3	1	0.93	14	0	0.00	0
WEB CIT - Web Design	0	0.00	0	1	0.20	3	0	0.00	0
CAE Creative Arts Entrepreneurship	0	0.00	0	1	0.87	13	1	0.47	7
DRFT Design Drafting Technology	0	0.00	0	1	0.87	13	1	0.60	9
GENO General Office Assistant	0	0.00	0	1	0.80	12	1	0.80	12
INTD Interior Design	0	0.00	0	1	0.80	12	1	0.60	9
Total - Business, Trades & Tech	7	3.27	49	22	17.13	257	19	13.47	202
Health Sciences									
DENA Dental Assistant	0	0.00	0	1	0.87	13	1	1.40	21
DENH Dental Hygiene	1	0.73	11	1	1.27	19	1	0.67	10
EMSP EMS - EMT- Paramedic	0	0.00	0	1	0.40	6	0	0.00	0
EMSF EMS-Fire & Rescue Technology	1	0.40	6	1	0.87	13	1	0.80	12
HICS Health Information Coding Spec	1	0.33	5	1	0.87	13	1	0.87	13
HIT Health Information Technology	2	0.67	10	0	0.00	0	0	0.00	0
MEDD Medical Administrative Asst	0	0.00	0	1	0.80	12	1	0.80	12
MBS Medical Billing Specialist	1	0.47	7	0	0.00	0	0	0.00	0
MEDR Medical Receptionist	0	0.00	0	0	0.00	0	1	0.87	13
MEDT Medical Transcription AAS	4	1.60	24	4	3.67	55	5	4.60	69
LPN Practical Nurse	0	0.00	0	0	0.00	0	1	1.13	17
DENP Pre-Dental Hygiene	0	0.00	0	3	2.47	37	3	2.20	33
LPNP Pre-Practical Nurse	1	0.67	10	5	4.13	62	4	2.87	43
RADP Pre-Radiologic Technology	0	0.00	0	1	0.80	12	1	0.80	12
RESP Pre-Respiratory Care	1	0.27	4	0	0.00	0	1	0.53	8
SURP Pre-Surgical Technology	1	0.40	6	5	3.87	58	3	2.40	36
REST Respiratory Care	0	0.00	0	1	1.00	15	0	0.00	0
SURG Surgical Technology	1	0.40	6	1	0.67	10	1	1.27	19
Total - Health Sciences	14	5.93	89	26	21.67	325	25	21.20	318
Other									
DC Dual Credit	0	0.00	0	3	0.60	9	0	0.00	0
ND Non-Degree	2	0.67	10	4	1.07	16	3	1.07	16
Total - Other	2	0.67	10	7	1.67	25	3	1.07	16
Total - Great Falls College	34	14.93	224	82	59.13	887	74	55.00	825

Great Falls College Office of Institutional Research
Native American Enrollment by Division and Program

2007-08 Academic Year	Summer 2007 (EOT)			Fall 2007 (EOT)			Spring 2008 (EOT)		
Division/Program	Count	FTE	Credit	Count	FTE	Credit	Count	FTE	Credit
Developmental Education & Transfer (Arts & Sciences)									
AAED Education	0	0.00	0	1	0.47	7	1	0.20	3
AAEE Elementary Education	1	0.47	7	0	0.00	0	0	0.00	0
GNEE General Education	8	3.40	51	25	18.13	272	21	15.33	230
ASPN Pre Nursing - transfer	0	0.00	0	1	0.80	12	2	1.80	27
Total - Dev Ed & Transfer (A&S)	9	3.87	58	27	19.40	291	24	17.33	260
Business, Trades & Technology									
ACCT Accounting	1	0.40	6	1	0.87	13	1	0.80	12
ACTA Accounting Assistant	0	0.00	0	0	0.00	0	1	0.87	13
AUTO Auto Body Repair & Refinishing	2	0.93	14	0	0.00	0	1	0.93	14
BMGT Business Mgt/Entrepreneurship	1	0.40	6	3	1.53	23	1	0.93	14
MICR CIT - Microcomputer Support	0	0.00	0	0	0.00	0	1	0.80	12
NETW CIT - Network Support	0	0.00	0	1	0.80	12	1	0.93	14
WEB CIT - Web Design	0	0.00	0	0	0.00	0	1	0.87	13
DRFT Design Drafting Technology	0	0.00	0	1	0.67	10	0	0.00	0
INTD Interior Design	0	0.00	0	1	0.60	9	1	0.40	6
Total - Business, Trades & Tech	4	1.73	26	7	4.47	67	8	6.53	98
Health Sciences									
DENA Dental Assistant	1	0.53	8	1	0.80	12	1	0.87	13
DENH Dental Hygiene	0	0.00	0	1	0.80	12	1	0.93	14
EMSF EMS-Fire & Rescue Technology	1	0.40	6	0	0.00	0	0	0.00	0
HICS Health Information Coding Spec	1	0.20	3	2	1.67	25	3	1.73	26
HIT Health Information Technology	0	0.00	0	4	3.27	49	3	2.73	41
MEDD Medical Administrative Asst	1	0.40	6	0	0.00	0	0	0.00	0
MBC Medical Billing & Coding	0	0.00	0	0	0.00	0	1	0.80	12
MEDT Medical Transcription AAS	2	0.87	13	1	0.73	11	0	0.00	0
DAP Pre-Dental Assisting	0	0.00	0	2	1.33	20	1	0.73	11
DENP Pre-Dental Hygiene	1	0.47	7	0	0.00	0	0	0.00	0
PTAP Pre-Physical Therapist Asst	0	0.00	0	1	0.47	7	1	0.40	6
LPNP Pre-Practical Nurse	1	0.53	8	9	4.87	73	16	8.87	133
RADP Pre-Radiologic Technology	0	0.00	0	2	1.80	27	1	0.80	12
RESP Pre-Respiratory Care	0	0.00	0	3	2.20	33	2	1.73	26
SURP Pre-Surgical Technology	1	0.40	6	3	1.73	26	2	0.87	13
REST Respiratory Care	0	0.00	0	1	0.73	11	1	1.13	17
SURG Surgical Technology	0	0.00	0	0	0.00	0	2	0.87	13
Total - Health Sciences	9	3.80	57	30	20.40	306	35	22.47	337
Other									
DC Dual Credit	0	0.00	0	1	0.27	4	1	0.20	3
ND Non-Degree	1	0.20	3	3	1.53	23	4	2.07	31
SEM Professional & Continuing Ed	0	0.00	0	1	0.20	3	0	0.00	0
Total - Other	1	0.20	3	5	2.00	30	5	2.27	34
Total - Great Falls College	23	9.60	144	69	46.27	694	72	48.60	729

Great Falls College Office of Institutional Research
Native American Enrollment by Division and Program

2008-09 Academic Year Division/Program	Summer 2008 (EOT)			Fall 2008 (EOT)			Spring 2009 (EOT)		
	Count	FTE	Credit Hours	Count	FTE	Credit Hours	Count	FTE	Credit Hours
Developmental Education & Transfer (Arts & Sciences)									
AAED Education	0	0.00	0	1	0.47	7	4	2.93	44
ASPN Pre Nursing - transfer	2	0.60	9	6	4.27	64	4	2.27	34
GNED General Education	4	1.40	21	27	19.33	290	21	14.73	221
Total - Dev Ed & Transfer (A&S)	6	2.00	30	34	24.07	361	29	19.93	299
Business, Trades & Technology									
ACCT Accounting	0	0.00	0	3	2.40	36	4	3.73	56
AUTO Auto Body Repair & Refinishing	0	0.00	0	1	0.87	13	1	0.87	13
BMGT Business Mgt/Entrepreneurship	0	0.00	0	6	4.80	72	5	3.93	59
MICR CIT - Microcomputer Support	0	0.00	0	1	0.60	9	1	0.40	6
NETW CIT - Network Support	0	0.00	0	1	0.80	12	2	1.87	28
COMA Computer Assistant	0	0.00	0	0	0.00	0	1	1.27	19
CONA Construction Tech-Carp AAS	0	0.00	0	1	1.07	16	1	0.47	7
WELD Welding	0	0.00	0	2	1.73	26	2	2.73	41
Total - Business, Trades & Tech	0	0.00	0	15	12.27	184	17	15.27	229
Health Sciences									
DENA Dental Assistant	0	0.00	0	2	1.73	26	1	1.20	18
DENH Dental Hygiene	0	0.00	0	1	0.80	12	1	1.07	16
EMSP EMS - EMT- Paramedic	1	0.40	6	0	0.00	0	0	0.00	0
HICS Health Information Coding Spec	2	0.87	13	1	0.87	13	1	0.80	12
HIT Health Information Technology	4	1.93	29	4	3.53	53	4	2.87	43
METR Medical Transcription CAS	0	0.00	0	0	0.00	0	1	0.80	12
DAP Pre-Dental Assisting	1	0.40	6	0	0.00	0	0	0.00	0
DENP Pre-Dental Hygiene	0	0.00	0	1	0.53	8	1	0.93	14
PTAP Pre-Physical Therapist Asst	0	0.00	0	1	0.93	14	1	0.73	11
LPNP Pre-Practical Nurse	9	3.27	49	13	7.87	118	14	9.93	149
RADP Pre-Radiologic Technology	0	0.00	0	5	4.13	62	1	0.93	14
RESP Pre-Respiratory Care	1	0.27	4	1	0.80	12	2	1.20	18
SURP Pre-Surgical Technology	0	0.00	0	1	0.87	13	0	0.00	0
PUB Public Safety Communications	0	0.00	0	0	0.00	0	1	0.93	14
RADT Radiologic Technology	0	0.00	0	1	0.47	7	1	0.20	3
REST Respiratory Care	1	0.53	8	3	2.80	42	2	1.60	24
Total - Health Sciences	19	7.67	115	34	25.33	380	31	23.20	348
Other									
DC Dual Credit	0	0.00	0	3	0.67	10	2	0.80	12
ND Non-Degree	2	0.87	13	1	0.40	6	4	0.80	12
SEM Professional & Continuing Ed	1	0.07	1	0	0.00	0	0	0.00	0
Total - Other	3	0.93	14	4	1.07	16	6	1.60	24
Total - Great Falls College	28	10.60	159	87	62.73	941	83	60.00	900

Great Falls College Office of Institutional Research
Native American Enrollment by Division and Program

2009-10 Academic Year Division/Program	Summer 2009 (EOT)			Fall 2009 (EOT)			Spring 2010 (EOT)		
	Count	FTE	Credit Hours	Count	FTE	Credit Hours	Count	FTE	Credit Hours
Developmental Education & Transfer (Arts & Sciences)									
AAED Education	0	0.00	0	6	5.13	77	2	1.07	16
ASPN Pre Nursing - transfer	1	0.20	3	5	3.53	53	5	3.73	56
GNEB General Education	3	1.27	19	26	20.07	301	32	23.47	352
Total - Dev Ed & Transfer (A&S)	4	1.47	22	37	28.73	431	39	28.27	424
Business, Trades & Technology									
ACCT Accounting	0	0.00	0	5	3.53	53	5	4.07	61
AUTO Auto Body Repair & Refinishing	0	0.00	0	1	1.07	16	1	1.07	16
BMGT Business Mgt/Entrepreneurship	1	0.40	6	4	2.93	44	4	3.67	55
MICR CIT - Microcomputer Support	2	0.67	10	3	1.53	23	1	0.20	3
NETW CIT - Network Support	0	0.00	0	2	1.27	19	3	1.73	26
COLL Collision & Refinishing Techno	0	0.00	0	3	3.00	45	3	3.40	51
COMA Computer Assistant	0	0.00	0	0	0.00	0	1	0.47	7
CONA Construction Tech-Carp AAS	0	0.00	0	2	1.93	29	4	4.07	61
CONC Construction Tech-Carp CAS	0	0.00	0	2	2.20	33	0	0.00	0
GRPH Graphic Design	0	0.00	0	1	0.93	14	3	2.33	35
SETC Sustainable Energy Tech-CAS	0	0.00	0	0	0.00	0	1	0.67	10
Total - Business, Trades & Tech	3	1.07	16	23	18.40	276	26	21.67	325
Health Sciences									
DENA Dental Assistant	1	0.47	7	0	0.00	0	0	0.00	0
DENH Dental Hygiene	1	0.73	11	2	1.73	26	2	1.60	24
EMSF EMS-Fire & Rescue Technology	1	0.47	7	1	0.93	14	0	0.00	0
HICS Health Information Coding Spec	2	1.07	16	1	0.47	7	1	0.53	8
HIT Health Information Technology	0	0.00	0	1	0.87	13	2	1.87	28
MEDA Medical Assistant	0	0.00	0	1	1.07	16	1	0.87	13
MBS Medical Billing Specialist	0	0.00	0	0	0.00	0	1	0.93	14
MBC Medical Billing & Coding	0	0.00	0	2	1.13	17	3	1.73	26
MEDT Medical Transcription AAS	1	0.40	6	1	0.87	13	3	2.53	38
METR Medical Transcription CAS	0	0.00	0	1	0.60	9	0	0.00	0
PHA Pharmacy Technician	0	0.00	0	0	0.00	0	1	0.40	6
LPN Practical Nurse	0	0.00	0	1	0.80	12	1	0.80	12
DAP Pre-Dental Assisting	0	0.00	0	0	0.00	0	1	0.80	12
DENP Pre-Dental Hygiene	0	0.00	0	2	1.60	24	1	0.93	14
PTAP Pre-Physical Therapist Asst	2	1.20	18	2	1.93	29	1	0.80	12
LPNP Pre-Practical Nurse	11	5.20	78	17	11.47	172	12	7.67	115
RADP Pre-Radiologic Technology	1	0.47	7	3	2.27	34	4	2.80	42
RESP Pre-Respiratory Care	0	0.00	0	1	0.47	7	3	2.40	36
SURP Pre-Surgical Technology	0	0.00	0	1	0.87	13	2	1.53	23
RADT Radiologic Technology	0	0.00	0	1	1.07	16	1	1.07	16
REST Respiratory Care	1	0.47	7	2	1.20	18	2	1.73	26
Total - Health Sciences	21	10.47	157	40	29.33	440	42	31.00	465
Other									
DC Dual Credit	0	0.00	0	6	1.53	23	2	0.60	9
ND Non-Degree	2	0.13	2	6	1.40	21	8	1.40	21
Total - Other	2	0.13	2	12	2.93	44	10	2.00	30
Total - Great Falls College	30	13.13	197	112	79.40	1,191	117	82.93	1,244

Great Falls College Office of Institutional Research
Native American Enrollment by Division and Program

2010-11 Academic Year Division/Program	Summer 2010 (EOT)			Fall 2010 (EOT)			Spring 2011 (EOT)		
	Count	FTE	Credit Hours	Count	FTE	Credit Hours	Count	FTE	Credit Hours
Developmental Education & Transfer (Arts & Sciences)									
AAED Education	0	0.00	0	4	3.47	52	6	5.07	76
ASPN Pre Nursing - transfer	2	0.87	13	8	7.07	106	6	4.47	67
GNED General Education	14	6.07	91	32	24.53	368	37	28.87	433
Total - Dev Ed & Transfer (A&S)	16	6.93	104	44	35.07	526	49	38.40	576
Business, Trades & Technology									
ACCT Accounting	0	0.00	0	3	2.07	31	2	1.07	16
BUSM Business Admin Management	0	0.00	0	3	2.60	39	4	3.40	51
BMGT Business Mgt/Entrepreneurship	1	0.47	7	2	1.07	16	1	0.67	10
MICR CIT - Microcomputer Support	0	0.00	0	3	2.13	32	2	1.07	16
NETW CIT - Network Support	0	0.00	0	3	1.73	26	3	1.73	26
COLL Collision & Refinishing Techno	0	0.00	0	2	2.13	32	1	1.07	16
COMA Computer Assistant	0	0.00	0	1	0.47	7	1	0.67	10
CSA Computer Server Administration	0	0.00	0	1	0.47	7	1	0.47	7
CONA Construction Tech-Carp AAS	3	1.27	19	3	3.20	48	3	3.47	52
CONC Construction Tech-Carp CAS	0	0.00	0	3	3.20	48	5	5.13	77
GRPH Graphic Design	0	0.00	0	1	0.80	12	2	0.80	12
SETP Pre-Sustainable Energy Tech	0	0.00	0	0	0.00	0	2	1.67	25
SETC Sustainable Energy Tech-CAS	2	0.80	12	2	1.20	18	1	0.60	9
WELD Welding	0	0.00	0	3	2.80	42	2	1.60	24
Total - Business, Trades & Tech	6	2.53	38	30	23.87	358	30	23.40	351
Health Sciences									
DENA Dental Assistant	0	0.00	0	1	0.93	14	1	0.93	14
DENH Dental Hygiene	1	0.73	11	1	0.93	14	1	0.80	12
EMSP EMS - EMT- Paramedic	0	0.00	0	1	1.00	15	1	0.93	14
HICS Health Information Coding Spec	1	0.47	7	1	0.93	14	0	0.00	0
HIT Health Information Technology	1	0.47	7	1	1.00	15	1	1.13	17
MEDA Medical Assistant	0	0.00	0	0	0.00	0	2	1.60	24
MBS Medical Billing Specialist	1	0.47	7	0	0.00	0	0	0.00	0
MBC Medical Billing & Coding	2	0.47	7	4	2.40	36	4	2.47	37
MEDT Medical Transcription AAS	1	0.40	6	1	0.67	10	2	1.73	26
LPN Practical Nurse	1	0.20	3	2	1.60	24	2	1.60	24
DENP Pre-Dental Hygiene	0	0.00	0	1	0.80	12	1	0.73	11
PPHA Pre-Pharmacy Technician	0	0.00	0	0	0.00	0	1	0.87	13
PTAP Pre-Physical Therapist Asst	2	1.00	15	2	1.80	27	2	1.53	23
LPNP Pre-Practical Nurse	6	2.60	39	13	9.13	137	9	5.60	84
RADP Pre-Radiologic Technology	0	0.00	0	3	1.87	28	4	2.47	37
RESP Pre-Respiratory Care	2	0.80	12	2	1.53	23	3	2.67	40
SURP Pre-Surgical Technology	1	0.40	6	2	1.27	19	1	0.73	11
RADT Radiologic Technology	1	0.53	8	1	0.80	12	1	0.93	14
REST Respiratory Care	1	0.47	7	3	2.67	40	3	2.60	39
Total - Health Sciences	21	9.00	135	39	29.33	440	39	29.33	440
Other									
BZDE Bozeman - Dual Enrolled	1	0.27	4	0	0.00	0	0	0.00	0
DC Dual Credit	0	0.00	0	5	1.20	18	2	0.60	9
ND Non-Degree	2	0.33	5	7	1.93	29	3	1.27	19
SEM Professional & Continuing Ed	1	0.07	1	0	0.00	0	1	0.33	5
Total - Other	4	0.67	10	12	3.13	47	6	2.20	33
Total - Great Falls College	47	19.13	287	125	91.40	1,371	124	93.33	1,400

Note: Bozeman programs are included in 2010-2011 - since any student enrolled is counted as our student

Great Falls College Office of Institutional Research
Native American Enrollment by Division and Program

2011-12 Academic Year Division/Program	Summer 2011 (EOT)			Fall 2011 (EOT)			Spring 2012 (EOT)		
	Count	FTE	Credit Hours	Count	FTE	Credit Hours	Count	FTE	Credit Hours
Developmental Education & Transfer									
AAED Education	4	1.60	24	3	2.53	38	3	2.40	36
GNED General Education	12	5.20	78	38	28.67	430	35	25.60	384
ASPN Pre Nursing - transfer	3	1.27	19	7	5.73	86	5	3.53	53
Total - Dev Ed & Transfer	19	8.07	121	48	36.93	554	43	31.53	473
Business, Trades & Technology									
ACCT Accounting	0	0.00	0	1	0.87	13	2	1.47	22
BUSE Business Admin Entrepreneurshi	1	0.53	8	1	0.93	14	1	0.87	13
BUSM Business Admin Management	1	0.67	10	10	6.87	103	7	4.67	70
BMGT Business Mgt/Entrepreneurship	0	0.00	0	1	0.80	12	1	0.60	9
NETW CIT - Network Support	1	0.47	7	4	2.73	41	4	2.73	41
COMA Computer Assistant	0	0.00	0	1	0.47	7	1	0.60	9
CSA Computer Server Administrator	0	0.00	0	0	0.00	0	1	0.53	8
CONA Construction Tech-Carp AAS	0	0.00	0	1	1.00	15	1	1.07	16
CONC Construction Tech-Carp CAS	1	0.47	7	2	2.13	32	1	1.13	17
GRPH Graphic Design	1	0.40	6	2	1.93	29	1	0.93	14
SETP Pre-Sustainable Energy Tech	1	0.47	7	3	2.20	33	3	1.87	28
SETA Sustainable Energy Tech-AAS	0	0.00	0	1	0.87	13	2	1.73	26
WELP Pre-Welding Technology	0	0.00	0	0	0.00	0	2	1.33	20
WELD Welding	0	0.00	0	2	1.80	27	2	1.80	27
Total - Business, Trades & Tech	6	3.00	45	29	22.60	339	29	21.33	320
Health Sciences									
DENA Dental Assistant	1	0.47	7	0	0.00	0	0	0.00	0
DENH Dental Hygiene	0	0.00	0	1	0.80	12	1	1.07	16
EMSP EMS - EMT- Paramedic	1	0.40	6	0	0.00	0	0	0.00	0
EMSI EMT Intermediate 99 Certificat	0	0.00	0	0	0.00	0	1	0.87	13
HIT Health Information Technology	0	0.00	0	0	0.00	0	1	0.40	6
MEDA Medical Assistant	3	1.27	19	1	0.40	6	0	0.00	0
MBS Medical Billing Specialist	0	0.00	0	1	0.80	12	1	0.60	9
MBC Medical Billing & Coding	4	2.20	33	2	1.60	24	2	1.67	25
MEDT Medical Transcription AAS	0	0.00	0	2	1.73	26	1	0.80	12
PHA Pharmacy Technician	0	0.00	0	1	0.87	13	3	1.47	22
LPN Practical Nurse	2	0.60	9	1	0.80	12	1	1.00	15
DAP Pre-Dental Assisting	0	0.00	0	0	0.00	0	1	0.53	8
DENP Pre-Dental Hygiene	2	0.67	10	4	2.73	41	4	3.33	50
PPHA Pre-Pharmacy Technician	1	0.47	7	1	0.60	9	1	0.67	10
PTAP Pre-Physical Therapist Asst	2	0.60	9	3	2.20	33	3	2.13	32
LPNP Pre-Practical Nurse	5	2.13	32	12	7.07	106	20	14.20	213
RADP Pre-Radiologic Technology	2	0.93	14	5	4.47	67	5	4.27	64
RESP Pre-Respiratory Care	2	0.87	13	6	3.80	57	4	2.93	44
SURP Pre-Surgical Technology	1	0.40	6	9	6.87	103	7	5.33	80
REST Respiratory Care	1	0.47	7	1	0.80	12	1	0.87	13
SURG Surgical Technology	0	0.00	0	0	0.00	0	1	0.80	12
Total - Health Sciences	27	11.47	172	50	35.53	533	58	42.93	644
Other									
DC Dual Credit	0	0.00	0	0	0.00	0	1	0.20	3
ND Non-Degree	6	1.07	16	1	0.20	3	4	0.80	12
Total - Other	6	1.07	16	1	0.20	3	5	1.00	15
Total - Great Falls College	58	23.60	354	128	95.27	1,429	135	96.80	1,452

Great Falls College Office of Institutional Research
Native American Enrollment by Division and Program

2012-13 Academic Year Division/Program	Summer 2012 (EOT)			Fall 2012 (EOT)			Spring 2013 (EOT)		
	Count	FTE	Credit Hours	Count	FTE	Credit Hours	Count	FTE	Credit Hours
Developmental Education & Transfer									
GNED General Education	10	4.60	69	39	28.93	434	44	31.67	475
Total - Dev Ed & Transfer	10	4.60	69	39	28.93	434	44	31.67	475
Business, Trades & Technology									
ACCT Accounting				2	1.67	25	2	1.53	23
BUSE Business Admin Entrepreneurshi	1	0.40	6	2	1.00	15	2	1.07	16
BUSM Business Admin Management	1	0.20	3	6	4.33	65	8	5.93	89
BMGT Business Mgt/Entrepreneurship				1	0.60	9	1	0.87	13
NETW CIT - Network Support	1	0.87	13	3	2.67	40	4	3.47	52
CONC Construction Tech-Carp CAS				4	3.87	58	4	3.80	57
GRPH Graphic Design	1	0.40	6	3	3.13	47	2	1.60	24
INTD Interior Design				1	0.80	12			
SETP Pre-Sustainable Energy Tech				1	0.87	13	1	0.93	14
SETA Sustainable Energy Tech-AAS				2	1.60	24	2	1.60	24
WELP Pre-Welding Technology							1	0.87	13
WELD Welding Technology - GF							3	3.00	45
Total - Business, Trades & Tech	4	1.87	28	25	20.53	308	30	24.67	370
Health Sciences									
DENA Dental Assistant				1	1.20	18			
DENH Dental Hygiene	1	0.93	14	1	0.93	14	1	1.07	16
EMSP EMS - EMT- Paramedic				2	2.27	34	2	1.93	29
HICS Health Info Coding Spec	1	0.20	3	1	0.80	12			
HIT Health Information Technology	1	0.47	7	3	2.20	33	5	3.60	54
MEDA Medical Assistant	1	0.47	7	1	0.87	13	2	1.60	24
MBS Medical Billing Specialist				2	1.60	24	1	0.80	12
MBC Medical Billing & Coding	3	0.93	14	4	2.60	39	2	1.33	20
MEDT Medical Transcription AAS	1	0.40	6	1	0.80	12	1	0.87	13
PHA Pharmacy Technician	2	0.73	11	1	0.87	13			
DAP Pre-Dental Assisting							1	0.80	12
DENP Pre-Dental Hygiene	1	0.47	7	3	1.87	28	3	1.27	19
PEMS Pre-EMS Paramedic				1	0.07	1	2	1.27	19
DIEP Pre-Dietetic Technician				1	0.27	4	1	0.47	7
PPHA Pre-Pharmacy Technician	3	1.07	16	4	3.47	52	5	3.13	47
PTAP Pre-Physical Therapist Asst	2	0.67	10	1	0.80	12	1	0.87	13
LPNP Pre-Practical Nurse	13	5.40	81	27	18.20	273	16	10.27	154
RADP Pre-Radiologic Technology	1	0.53	8	4	3.20	48	4	3.20	48
SURP Pre-Surgical Technology	2	0.87	13	4	2.53	38	6	4.07	61
REST Respiratory Care		0.00		1	1.00	15			
SURG Surgical Technology							1	0.87	13
Total - Health Sciences	32	13.13	197	63	45.53	683	54	36.53	561
Other									
DC Dual Credit							4	1.13	17
ND Non-Degree				2	0.33	5	4	1.13	17
Total - Other	0	0.00	0	2	0.33	5	8	2.27	34
Total - Great Falls College	46	19.60	294	129	95.33	1,430	136	95.13	1,440

Great Falls College Office of Institutional Research
Native American Enrollment by Division and Program

2013-14 Academic Year Division/Program	Summer 2013 (EOT)			Fall 2013 (EOT)			Spring 2014 (EOT)		
	Count	FTE	Credit Hours	Count	FTE	Credit Hours	Count	FTE	Credit Hours
Developmental Education & Transfer									
GNED General Education	20	9.00	135	48	35.27	529	48	32.87	493
Total - Dev Ed & Transfer	20	9.00	135	48	35.27	529	48	32.87	493
Business, Trades & Technology									
ACCT Accounting	1	0.40	6	4	2.87	43	3	2.20	33
BUSE Business Admin Entrepreneurshi				1	0.87	13	1	0.73	11
BUSM Business Admin Management	4	1.27	19	7	5.40	81	3	2.07	31
BMGT Business Mgt/Entrepreneurship									
NETW CIT - Network Support	2	0.60	9	3	2.80	42	3	2.87	43
COMA Computer Assistant				1	0.67	10	1	0.53	8
CONC Construction Tech-Carp CAS				3	3.27	49	2	1.93	29
GRPH Graphic Design				1	0.80	12	2	1.27	19
SETA Sustainable Energy Tech-AAS				2	1.73	26	2	1.73	26
WELP Pre-Welding Technology				2	0.87	13	3	2.27	34
WELD Welding Technology - GF	6	5.40	81	4	3.73	56	5	5.13	77
Total - Business, Trades & Tech	13	7.67	115	28	23.00	345	25	20.73	311
Health Sciences									
DENA Dental Assistant				2	1.40	21	2	1.73	26
DENH Dental Hygiene	1	0.93	14	1	0.93	14	1	0.80	12
EMSP EMS - EMT - Paramedic	2	0.80	12						
HIT Health Information Technology	1	0.47	7	1	0.53	8	2	1.67	25
MEDA Medical Assistant	2	1.07	16	4	3.07	46	7	5.40	81
MBS Medical Billing Specialist							1	0.93	14
MBC Medical Billing & Coding	1	0.47	7	5	3.67	55	6	5.33	80
MEDT Medical Transcription AAS	1	0.47	7	1	0.87	13			
PHA Pharmacy Technician				1	0.60	9	1	0.60	9
DAP Pre-Dental Assisting	1	0.27	4						
DENP Pre-Dental Hygiene				4	2.73	41	4	2.53	38
PEMS Pre-EMS Paramedic				2	1.80	27	5	3.13	47
DIEP Pre-Dietetic Technician	1	0.40	6						
PPHA Pre-Pharmacy Technician	1	0.40	6	4	2.53	38	2	1.67	25
PTAP Pre-Physical Therapist Asst	1	0.20	3	1	0.93	14	3	1.53	23
LPNP Pre-Practical Nurse	6	2.47	37	20	12.73	191	14	7.73	116
RADP Pre-Radiologic Technology	2	0.67	10	4	2.60	39	2	1.33	20
RESP Pre-Respiratory Care				1	0.80	12	2	1.67	25
SURP Pre-Surgical Technology	2	0.73	11	7	4.07	61	3	1.93	29
REST Respiratory Care				1	0.80	12	1	0.87	13
SURG Surgical Technology							1	0.60	9
Total - Health Sciences	22	9.33	140	59	40.07	601	57	39.47	592
Other									
DC Dual Credit	1	0.20	3	2	0.40	6	7	2.00	30
ND Non-Degree				2	0.80	12	1	0.40	6
Total - Other	1	0.20	3	4	1.20	18	8	2.40	36
Total - Great Falls College	56	26.20	393	139	99.53	1,493	138	95.47	1,432

Great Falls College Office of Institutional Research
Native American Enrollment by Division and Program

2014-15 Academic Year Division/Program	Summer 2014 (EOT)			Fall 2014 (EOT)			Spring 2015 (EOT)		
	Count	FTE	Credit Hours	Count	FTE	Credit Hours	Count	FTE	Credit Hours
Developmental Education & Transfer									
GNED General Education	9	3.80	57	49	35.93	539	40	28.93	434
Total - Dev Ed & Transfer	9	3.80	57	49	35.93	539	40	28.93	434
Business, Trades & Technology									
ACCT Accounting				3	3.07	46	3	2.87	43
BUSE Business Admin Entrepreneurshi				1	0.93	14			
BUSM Business Admin Management	1	0.60	9	4	2.67	40	4	2.47	37
BMGT Business Mgt/Entrepreneurship									
NETW CIT - Network Support	1	0.40	6						
COMA Computer Assistant									
CONC Construction Tech-Carp CAS				2	2.27	34	2	2.00	30
GRPH Graphic Design	1	0.40	6	2	1.67	25	3	2.73	41
SETP Pre-Sustainable Energy Tech	1	0.40	6	1	0.60	9	1	0.80	12
SETA Sustainable Energy Tech-AAS									
WEB CIT - Web Design				1	0.87	13			
WELP Pre-Welding Technology				1	0.07	1			
WELD Welding Technology - GF	8	7.60	114	5	5.13	77	6	6.27	94
Total - Business, Trades & Tech	12	9.40	141	20	17.27	259	19	17.13	257

Health Sciences										
DENA	Dental Assistant	2	0.93	14						
DENH	Dental Hygiene									
EMSP	EMS - EMT- Paramedic				1	1.13	17	1	0.87	13
EMT	EMT/Pre-Paramedic				2	1.80	27	4	2.67	40
HIT	Health Information Technology	3	1.93	29	6	5.67	85	6	5.07	76
HICS	Health Information Coding Spec	1	0.40	6						
HOFF	Healthcare Office				3	1.60	24	2	1.53	23
MEDA	Medical Assistant	2	0.80	12	4	2.47	37	4	2.80	42
MBS	Medical Billing Specialist									
MBC	Medical Billing & Coding	2	0.93	14	2	1.67	25	4	2.33	35
MEDT	Medical Transcription AAS									
LPN	Practical Nurse				5	4.07	61	5	4.67	70
PHA	Pharmacy Technician									
DAP	Pre-Dental Assisting							1	0.47	7
DENP	Pre-Dental Hygiene				6	4.13	62	6	4.20	63
PHLE	Phlebotomy/Pre-Med Assistant				2	1.47	22	3	2.20	33
PEMS	Pre-EMS Paramedic	3	1.20	18	1	0.73	11	1	0.93	14
DIEP	Pre-Dietetic Technician									
PPHA	Pre-Pharmacy Technician	1	0.20	3	3	2.13	32			
PTAP	Pre-Physical Therapist Asst	1	0.47	7				1	0.73	11
LPNP	Pre-Practical Nurse	1	0.40	6	13	7.20	108	5	3.33	50
RADP	Pre-Radiologic Technology									
RESP	Pre-Respiratory Care	2	1.00	15	2	1.73	26	1	0.53	8
SURP	Pre-Surgical Technology				1	0.60	9	4	2.47	37
REST	Respiratory Care				1	0.80	12	1	0.80	12
SURG	Surgical Technology				1	1.07	16	1	1.00	15
	Total - Health Sciences	18	8.27	124	53	37.20	574	50	36.60	549
Other										
DC	Dual Credit				6	1.33	20	9	2.67	40
ND	Non-Degree	1	0.20	3	3	1.80	27	2	0.60	9
	Total - Other	1	0.20	3	9	3.13	47	11	3.27	49
Total - Great Falls College		40	21.67	325	131	93.53	1,419	120	85.93	1,289

Great Falls College Office of Institutional Research
Native American Enrollment by Division and Program

2015-16 Academic Year Division/Program	Summer 2015 (EOT)			Fall 2015 (EOT)			Spring 2016 (EOT)		
	Count	FTE	Credit Hours	Count	FTE	Credit Hours	Count	FTE	Credit Hours
Developmental Education & Transfer									
GNED General Education	12	5.20	78	22	15.80	237	30	20.73	311
Total - Dev Ed & Transfer	12	5.20	78	22	15.80	237	30	20.73	311
Business, Trades & Technology									
ACCT Accounting				3	2.27	34	4	3.40	51
BUSE Business Admin Entrepreneurshi				3	2.13	32	3	2.13	32
BUSM Business Admin Management				6	3.73	56	5	3.53	53
BMGT Business Mgt/Entrepreneurship									
MICR CIT - Microcomputer Support				1	0.53	8			
NETW CIT - Network Support				1	1.00	15	1	1.07	16
COMA Computer Assistant									
CONC Construction Tech-Carp CAS				2	2.13	32	1	1.07	16
GRPH Graphic Design				1	0.80	12			
SETP Pre-Sustainable Energy Tech									
SETA Sustainable Energy Tech-AAS									
WEB CIT - Web Design									
WELP Pre-Welding Technology							1	0.47	7
WELD Welding Technology - GF	2	2.13	32	2	2.13	32	4	4.00	60
Total - Business, Trades & Tech	2	2.13	32	19	14.73	221	19	15.67	235

Health Sciences											
DENA	Dental Assistant				1	1.20	18	1	1.13	17	
DENH	Dental Hygiene				2	1.60	24	2	2.13	32	
EMSP	EMS - EMT- Paramedic	1	0.93	14	1	1.13	17				
EMT	EMT/Pre-Paramedic	1	0.53	8	1	0.47	7	2	1.47	22	
HER	Healthcare Informatics Tech				1	0.47	7	1	0.87	13	
HIT	Health Information Technology	3	1.40	21	5	4.13	62	5	3.87	58	
HICS	Health Information Coding Spec							1	0.20	3	
HOFF	Healthcare Office				1	0.87	13	2	1.80	27	
MEDA	Medical Assistant				2	1.47	22	3	1.73	26	
MBS	Medical Billing Specialist										
MBC	Medical Billing & Coding	1	0.47	7	2	1.13	17	3	2.27	34	
MEDT	Medical Transcription AAS										
LPN	Practical Nurse	2	0.40	6	1	0.80	12				
PHA	Pharmacy Technician							1	0.53	8	
DAP	Pre-Dental Assisting				1	0.27	4	1	0.33	5	
DENP	Pre-Dental Hygiene	1	0.20	3							
PHLE	Phlebotomy/Pre-Med Assistant				3	2.33	35	1	0.80	12	
PEMS	Pre-EMS Paramedic	1	0.40	6	2	1.33	20	2	1.07	16	
DIEP	Pre-Dietetic Technician										
PPHA	Pre-Pharmacy Technician	1	0.40	6							
PTAP	Pre-Physical Therapist Asst				1	0.87	13	1	0.93	14	
LPNP	Pre-Practical Nurse	1	0.20	3	5	2.80	42	2	0.80	12	
RADP	Pre-Radiologic Technology										
RESP	Pre-Respiratory Care				1	0.80	12				
SURP	Pre-Surgical Technology	1	0.47	7	2	0.73	11	2	0.67	10	
REST	Respiratory Care				1	0.80	12				
PASN	Pre-Registered Nurse							3	2.20	33	
PRN	Pre-Registered Nurse				3	0.80	12	1	0.53	8	
RN	Registered Nurse							2	0.80	12	
SURG	Surgical Technology										
	Total - Health Sciences	13	5.40	81	36	23.20	360	36	24.13	362	
Other											
DC	Dual Credit				6	1.07	16	15	4.93	74	
ND	Non-Degree	1	0.47	7	1	0.20	3	3	1.13	17	
	Total - Other	1	0.47	7	7	1.27	19	18	6.07	91	
Total - Great Falls College			28	13.20	198	84	55.00	837	103	66.60	999

Great Falls College Office of Institutional Research
Native American Enrollment by Tribe

Tribe	2006-2007 Academic Year			2007-2008 Academic Year			2008-2009 Academic Year		
	Summer 2006	Fall 2006	Spring 2007	Summer 2007	Fall 2007	Spring 2008	Summer 2008	Fall 2008	Spring 2009
J Assiniboine - Fort Belknap reservation	1	2	1			1			
M Assiniboine - Fort Peck reservation	1	1	1	1					
B Blackfeet - Blackfeet reservation	4	12	9	2	4	4	3	6	4
A Blackfeet - no reservation	2	7	5	1	4	3	2	3	3
T Chippewa - Little Shell band	1	2	4	3	4	4	2	3	2
S Chippewa - Rocky Boy reservation	5	4	3	1	4	1	1	1	1
W Chippewa - Turtle Mountain reservation	1	4	5	2	7	6		4	6
R Chippewa - no reservation	2	4	4	1	1	1	1	2	2
D Crow - Crow reservation						1	1		
K Gros Ventre - no reservation									1
P Northern Cheyenne - no reservation	1	1	1		1			1	
X Other Tribal affiliation		2	1	1	1	2		2	
Unknown	16	43	40	11	43	49	18	65	64
Total - Great Falls College	34	82	74	23	69	72	28	87	83

Note: Bozeman programs excluded prior to 2010-2011

Great Falls College Office of Institutional Research
Native American Enrollment by Tribe

Tribe	2009-2010 Academic Year			2010-2011 Academic Year			2011-2012 Academic Year		
	Summer 2009	Fall 2009	Spring 2010	Summer 2010	Fall 2010	Spring 2011	Summer 2011	Fall 2011	Spring 2012
J Assiniboine - Fort Belknap reservation	1	3	3		1	2	1	2	2
M Assiniboine - Fort Peck reservation					1		1	2	
B Blackfeet - Blackfeet reservation		4	5	3	14	16	7	18	20
A Blackfeet - no reservation	1	2	3		5	7	4	7	7
T Chippewa - Little Shell band		1			9	9	5	9	7
S Chippewa - Rocky Boy reservation	1	3	2	2	3	3	1	5	4
W Chippewa - Turtle Mountain reservation	1	5	4	2	10	11	7	7	7
R Chippewa - no reservation		1	1	1		1		2	2
V Cree - Rocky Boy reservation					3	3	1	4	6
U Cree - no reservation					5	5	2	7	6
D Crow - Crow reservation			1		2				1
C Crow - no reservation								1	1
L Gros Ventre - Fort Belknap reservation	1	1			1	1	1	6	7
K Gros Ventre - no reservation		1	1						
Q Northern Cheyenne - No. Cheyenne reservation					1	1		1	2
F Salish - Salish/Kootenai reservation					1	1			
O Sioux - Fort Peck reservation					2	4		3	1
X Other Tribal affiliation	1	2	2		6	6	2	4	5
Unknown	24	89	95	39	61	54	26	50	57
Total - Great Falls College	30	112	117	47	125	124	58	128	135

Note: Bozeman programs are included 2010-2011 and on

Great Falls College Office of Institutional Research
Native American Enrollment by Tribe

Tribe	2012-2013 Academic Year			2013-2014 Academic Year			2014-2015 Academic Year		
	Summer 2012	Fall 2012	Spring 2013	Summer 2013	Fall 2013	Spring 2014	Summer 2014	Fall 2014	Spring 2015
J Assiniboine - Fort Belknap reservation		2	4	1	3	3	2	4	2
M Assiniboine - Fort Peck reservation		1	2	2	2	2	1	1	
B Blackfeet - Blackfeet reservation	5	20	16	7	20	20	8	16	20
A Blackfeet - no reservation	3	5	6	1	3	3		1	3
T Chippewa - Little Shell band	2	7	6	4	5	4	1	4	3
S Chippewa - Rocky Boy reservation	1	2	4	2	7	11		9	5
W Chippewa - Turtle Mountain reservation	5	8	10	2	8	6	2	10	9
R Chippewa - no reservation		3	3	1	3	1	1	4	3
V Cree - Rocky Boy reservation	4	7	6	2	6	5	1	5	5
U Cree - no reservation		5	5	3	5	3		1	1
D Crow - Crow reservation		2	2		1			1	
C Crow - no reservation		2	2	1	2	2	1	1	1
L Gros Ventre - Fort Belknap reservation	3	8	4	3	4	6		4	4
K Gros Ventre - no reservation								1	
H Kootenai - Salish/Kootenai reservation						1	2	2	1
Q Northern Cheyenne - No. Cheyenne reservation		1	1		1	1	1		
F Salish - Salish/Kootenai reservation								1	1
O Sioux - Fort Peck reservation		2	2		3	4	2	2	
X Other Tribal affiliation	3	5	4	1	5	6	2	9	4
Unknown (includes code N)	20	49	59	26	61	60	16	55	58
Total - Great Falls College	46	129	136	56	139	138	40	131	120

Great Falls College Office of Institutional Research
Native American Enrollment by Tribe

Tribe	2015-2016 Academic Year			2016-2017 Academic Year			2017-2018 Academic Year		
	Summer 2015	Fall 2015	Spring 2016	Summer 2016	Fall 2016	Spring 2017	Summer 2017	Fall 2017	Spring 2018
J Assiniboine - Fort Belknap reservation	1	1	3						
M Assiniboine - Fort Peck reservation									
B Blackfeet - Blackfeet reservation	5	9	13						
A Blackfeet - no reservation		3	3						
T Chippewa - Little Shell band	1	1	5						
S Chippewa - Rocky Boy reservation	1	1	3						
W Chippewa - Turtle Mountain reservation	1	8	9						
R Chippewa - no reservation	1	2	1						
V Cree - Rocky Boy reservation		3	2						
U Cree - no reservation									
D Crow - Crow reservation									
C Crow - no reservation									
L Gros Ventre - Fort Belknap reservation	1	2	2						
K Gros Ventre - no reservation									
H Kootenai - Salish/Kootenai reservation	1	1	1						
Q Northern Cheyenne - No. Cheyenne reservation			1						
F Salish - Salish/Kootenai reservation		2	2						
O Sioux - Fort Peck reservation		3	4						
X Other Tribal affiliation	2	6	7						
Unknown (includes code N)	14	42	47						
Total - Great Falls College	28	84	103	0	0	0	0	0	0

Great Falls College Office of Institutional Research
Enrollment by Age of Native American Students

FT/PT - Age Range	2006-2007 Academic Year						2007-2008 Academic Year						2008-2009 Academic Year							
	Summer 2006 (EOT)		Fall 2006 (EOT)		Spring 2007 (EOT)		Summer 2007 (EOT)		Fall 2007 (EOT)		Spring 2008 (EOT)		Summer 2008 (EOT)		Fall 2008 (EOT)		Spring 2009 (EOT)			
	Count	Percent	Count	Percent	Count	Percent	Count	Percent	Count	Percent	Count	Percent	Count	Percent	Count	Percent	Count	Percent		
Full-Time																				
Age 17 and under	0	0.0%	0	0.0%	0	0.0%	0	0.0%	0	0.0%	0	0.0%	0	---	0	0.0%	0	0.0%		
18-19	0	0.0%	3	5.5%	3	6.7%	1	100.0%	7	20.6%	5	12.5%	0	---	10	19.2%	5	11.6%		
20-21	0	0.0%	12	21.8%	8	17.8%	0	0.0%	5	14.7%	4	10.0%	0	---	4	7.7%	5	11.6%		
22-24	0	0.0%	3	5.5%	9	20.0%	0	0.0%	2	5.9%	6	15.0%	0	---	6	11.5%	2	4.7%		
25-29	0	0.0%	15	27.3%	10	22.2%	0	0.0%	8	23.5%	10	25.0%	0	---	13	25.0%	13	30.2%		
30-34	1	100.0%	9	16.4%	5	11.1%	0	0.0%	8	23.5%	9	22.5%	0	---	8	15.4%	11	25.6%		
35-39	0	0.0%	5	9.1%	3	6.7%	0	0.0%	1	2.9%	3	7.5%	0	---	5	9.6%	2	4.7%		
40-49	0	0.0%	5	9.1%	5	11.1%	0	0.0%	2	5.9%	1	2.5%	0	---	5	9.6%	3	7.0%		
50-64	0	0.0%	3	5.5%	2	4.4%	0	0.0%	1	2.9%	2	5.0%	0	---	1	1.9%	2	4.7%		
65 and up	0	0.0%	0	0.0%	0	0.0%	0	0.0%	0	0.0%	0	0.0%	0	---	0	0.0%	0	0.0%		
Full-Time Total	1	100.0%	55	100.0%	45	100.0%	1	100.0%	34	100.0%	40	100.0%	0	---	52	100.0%	43	100.0%		
FT Average Age	30.0		29.6		28.9		19.0		27.1		28.5		---	28.0		29.0				
Part-Time																				
Age 17 and under	0	0.0%	2	7.4%	0	0.0%	0	0.0%	1	2.9%	1	3.1%	0	0.0%	0	0.0%	0	0.0%	0	0.0%
18-19	3	9.1%	5	18.5%	4	13.8%	1	4.5%	2	5.7%	5	15.6%	1	3.6%	4	11.4%	4	10.0%		
20-21	4	12.1%	2	7.4%	4	13.8%	1	4.5%	2	5.7%	3	9.4%	0	0.0%	7	20.0%	1	2.5%		
22-24	3	9.1%	5	18.5%	2	6.9%	4	18.2%	7	20.0%	4	12.5%	3	10.7%	6	17.1%	8	20.0%		
25-29	9	27.3%	2	7.4%	3	10.3%	6	27.3%	8	22.9%	6	18.8%	13	46.4%	7	20.0%	10	25.0%		
30-34	3	9.1%	4	14.8%	8	27.6%	4	18.2%	6	17.1%	6	18.8%	5	17.9%	7	20.0%	10	25.0%		
35-39	3	9.1%	0	0.0%	1	3.4%	0	0.0%	3	8.6%	1	3.1%	1	3.6%	0	0.0%	2	5.0%		
40-49	8	24.2%	3	11.1%	4	13.8%	6	27.3%	5	14.3%	5	15.6%	5	17.9%	4	11.4%	5	12.5%		
50-64	0	0.0%	4	14.8%	3	10.3%	0	0.0%	1	2.9%	1	3.1%	0	0.0%	0	0.0%	0	0.0%		
65 and up	0	0.0%	0	0.0%	0	0.0%	0	0.0%	0	0.0%	0	0.0%	0	0.0%	0	0.0%	0	0.0%		
Part-Time Total	33	100.0%	27	100.0%	29	100.0%	22	100.0%	35	100.0%	32	100.0%	28	100.0%	35	100.0%	40	100.0%		
PT Average Age	30.6		30.2		31.3		31.8		30.2		29.2		30.5		26.7		28.6			
All Students																				
Age 17 and under	0	0.0%	2	2.4%	0	0.0%	0	0.0%	1	1.4%	1	1.4%	0	0.0%	0	0.0%	0	0.0%	0	0.0%
18-19	3	8.8%	8	9.8%	7	9.5%	2	8.7%	9	13.0%	10	13.9%	1	3.6%	14	16.1%	9	10.8%		
20-21	4	11.8%	14	17.1%	12	16.2%	1	4.3%	7	10.1%	7	9.7%	0	0.0%	11	12.6%	6	7.2%		
22-24	3	8.8%	8	9.8%	11	14.9%	4	17.4%	9	13.0%	10	13.9%	3	10.7%	12	13.8%	10	12.0%		
25-29	9	26.5%	17	20.7%	13	17.6%	6	26.1%	16	23.2%	16	22.2%	13	46.4%	20	23.0%	23	27.7%		
30-34	4	11.8%	13	15.9%	13	17.6%	4	17.4%	14	20.3%	15	20.8%	5	17.9%	15	17.2%	21	25.3%		
35-39	3	8.8%	5	6.1%	4	5.4%	0	0.0%	4	5.8%	4	5.6%	1	3.6%	5	5.7%	4	4.8%		
40-49	8	23.5%	8	9.8%	9	12.2%	6	26.1%	7	10.1%	6	8.3%	5	17.9%	9	10.3%	8	9.6%		
50-64	0	0.0%	7	8.5%	5	6.8%	0	0.0%	2	2.9%	3	4.2%	0	0.0%	1	1.1%	2	2.4%		
65 and up	0	0.0%	0	0.0%	0	0.0%	0	0.0%	0	0.0%	0	0.0%	0	0.0%	0	0.0%	0	0.0%		
Total	34	100.0%	82	100.0%	74	100.0%	23	100.0%	69	100.0%	72	100.0%	28	100.0%	87	100.0%	83	100.0%		
All Students Average Age	30.6		29.8		29.9		31.3		28.7		28.8		30.5		27.5		28.8			

Great Falls College Office of Institutional Research
Enrollment by Age of Native American Students

FT/PT - Age Range	2009-2010 Academic Year						2010-2011 Academic Year						2011-2012 Academic Year					
	Summer 2009 (EOT)		Fall 2009 (EOT)		Spring 2010 (EOT)		Summer 2010 (EOT)		Fall 2010 (EOT)		Spring 2011 (EOT)		Summer 2011 (EOT)		Fall 2011 (EOT)		Spring 2012 (EOT)	
	Count	Percent	Count	Percent	Count	Percent	Count	Percent	Count	Percent	Count	Percent	Count	Percent	Count	Percent	Count	Percent
Full-Time																		
Age 17 and under	0	0.0%	0	0.0%	0	0.0%	0	---	0	0.0%	0	0.0%	0	0.0%	0	0.0%	0	0.0%
18-19	0	0.0%	9	14.8%	5	11.6%	0	---	8	11.1%	4	5.1%	0	0.0%	13	16.5%	15	20.3%
20-21	0	0.0%	9	14.8%	5	11.6%	0	---	11	15.3%	16	20.3%	1	100.0%	9	11.4%	6	8.1%
22-24	0	0.0%	8	13.1%	2	4.7%	0	---	12	16.7%	14	17.7%	0	0.0%	16	20.3%	15	20.3%
25-29	0	0.0%	14	23.0%	13	30.2%	0	---	19	26.4%	20	25.3%	0	0.0%	16	20.3%	14	18.9%
30-34	1	100.0%	12	19.7%	11	25.6%	0	---	12	16.7%	12	15.2%	0	0.0%	7	8.9%	8	10.8%
35-39	0	0.0%	4	6.6%	2	4.7%	0	---	7	9.7%	5	6.3%	0	0.0%	9	11.4%	9	12.2%
40-49	0	0.0%	4	6.6%	3	7.0%	0	---	3	4.2%	7	8.9%	0	0.0%	6	7.6%	4	5.4%
50-64	0	0.0%	0	0.0%	2	4.7%	0	---	0	0.0%	1	1.3%	0	0.0%	3	3.8%	3	4.1%
65 and up	0	0.0%	1	1.6%	0	0.0%	0	---	0	0.0%	0	0.0%	0	0.0%	0	0.0%	0	0.0%
Full-Time Total	1	100.0%	61	100.0%	43	100.0%	0	---	72	100.0%	79	100.0%	1	100.0%	79	100.0%	74	100.0%
FT Average Age	32.0		27.7		27.6		---	26.9		27.9		21.0		27.8		27.6		
Part-Time																		
Age 17 and under	0	0.0%	3	5.9%	0	0.0%	0	0.0%	4	7.5%	2	4.4%	0	0.0%	0	0.0%	1	1.6%
18-19	0	0.0%	7	13.7%	4	10.0%	3	6.4%	1	1.9%	4	8.9%	0	0.0%	1	2.0%	5	8.2%
20-21	3	10.3%	3	5.9%	1	2.5%	6	12.8%	6	11.3%	5	11.1%	6	10.5%	7	14.3%	5	8.2%
22-24	4	13.8%	8	15.7%	8	20.0%	8	17.0%	7	13.2%	2	4.4%	10	17.5%	7	14.3%	10	16.4%
25-29	12	41.4%	11	21.6%	10	25.0%	16	34.0%	18	34.0%	12	26.7%	15	26.3%	12	24.5%	13	21.3%
30-34	6	20.7%	11	21.6%	10	25.0%	7	14.9%	6	11.3%	8	17.8%	10	17.5%	9	18.4%	10	16.4%
35-39	2	6.9%	3	5.9%	2	5.0%	4	8.5%	4	7.5%	4	8.9%	8	14.0%	5	10.2%	6	9.8%
40-49	2	6.9%	3	5.9%	5	12.5%	2	4.3%	4	7.5%	5	11.1%	4	7.0%	4	8.2%	8	13.1%
50-64	0	0.0%	2	3.9%	0	0.0%	1	2.1%	3	5.7%	3	6.7%	4	7.0%	4	8.2%	3	4.9%
65 and up	0	0.0%	0	0.0%	0	0.0%	0	0.0%	0	0.0%	0	0.0%	0	0.0%	0	0.0%	0	0.0%
Part-Time Total	29	100.0%	51	100.0%	40	100.0%	47	100.0%	53	100.0%	45	100.0%	57	100.0%	49	100.0%	61	100.0%
PT Average Age	28.2		27.8		29.5		27.6		29.1		30.7		30.9		30.7		30.5	
All Students																		
Age 17 and under	0	0.0%	3	2.7%	0	0.0%	0	0.0%	4	3.2%	2	1.6%	0	0.0%	0	0.0%	1	0.7%
18-19	0	0.0%	16	14.3%	9	10.8%	3	6.4%	9	7.2%	8	6.5%	0	0.0%	14	10.9%	20	14.8%
20-21	3	10.0%	12	10.7%	6	7.2%	6	12.8%	17	13.6%	21	16.9%	7	12.1%	16	12.5%	11	8.1%
22-24	4	13.3%	16	14.3%	10	12.0%	8	17.0%	19	15.2%	16	12.9%	10	17.2%	23	18.0%	25	18.5%
25-29	12	40.0%	25	22.3%	23	27.7%	16	34.0%	37	29.6%	32	25.8%	15	25.9%	28	21.9%	27	20.0%
30-34	7	23.3%	23	20.5%	21	25.3%	7	14.9%	18	14.4%	20	16.1%	10	17.2%	16	12.5%	18	13.3%
35-39	2	6.7%	7	6.3%	4	4.8%	4	8.5%	11	8.8%	9	7.3%	8	13.8%	14	10.9%	15	11.1%
40-49	2	6.7%	7	6.3%	8	9.6%	2	4.3%	7	5.6%	12	9.7%	4	6.9%	10	7.8%	12	8.9%
50-64	0	0.0%	2	1.8%	2	2.4%	1	2.1%	3	2.4%	4	3.2%	4	6.9%	7	5.5%	6	4.4%
65 and up	0	0.0%	1	0.9%	0	0.0%	0	0.0%	0	0.0%	0	0.0%	0	0.0%	0	0.0%	0	0.0%
Total	30	100.0%	112	100.0%	83	100.0%	47	100.0%	125	100.0%	124	100.0%	58	100.0%	128	100.0%	135	100.0%
All Students Average Age	28.3		27.7		28.4		27.6		27.8		28.9		30.8		28.9		28.9	

Great Falls College Office of Institutional Research
Enrollment by Age of Native American Students

FT/PT - Age Range	2012-2013 Academic Year						2013-2014 Academic Year						2014-2015 Academic Year					
	Summer 2012 (EOT)		Fall 2012 (EOT)		Spring 2013 (EOT)		Summer 2013 (EOT)		Fall 2013 (EOT)		Spring 2014 (EOT)		Summer 2014 (EOT)		Fall 2014 (EOT)		Spring 2015 (EOT)	
	Count	Percent	Count	Percent	Count	Percent	Count	Percent	Count	Percent	Count	Percent	Count	Percent	Count	Percent	Count	Percent
Full-Time																		
Age 17 and under	0	0.0%	1	1.3%	0	0.0%	0	0.0%	1	1.4%	0	0.0%	0	0.0%	0	0.0%	0	0.0%
18-19	0	0.0%	9	11.4%	7	10.0%	0	0.0%	11	15.9%	7	10.4%	0	0.0%	4	6.3%	3	4.8%
20-21	0	0.0%	6	7.6%	7	10.0%	0	0.0%	10	14.5%	7	10.4%	0	0.0%	11	17.2%	10	15.9%
22-24	1	50.0%	14	17.7%	10	14.3%	0	0.0%	4	5.8%	7	10.4%	1	11.1%	12	18.8%	13	20.6%
25-29	0	0.0%	19	24.1%	21	30.0%	3	42.9%	15	21.7%	16	23.9%	1	11.1%	14	21.9%	7	11.1%
30-34	0	0.0%	7	8.9%	6	8.6%	0	0.0%	6	8.7%	10	14.9%	2	22.2%	17	26.6%	17	27.0%
35-39	0	0.0%	9	11.4%	7	10.0%	2	28.6%	11	15.9%	7	10.4%	2	22.2%	2	3.1%	5	7.9%
40-49	1	50.0%	10	12.7%	9	12.9%	2	28.6%	8	11.6%	9	13.4%	2	22.2%	3	4.7%	6	9.5%
50-64	0	0.0%	4	5.1%	3	4.3%	0	0.0%	3	4.3%	4	6.0%	1	11.1%	1	1.6%	2	3.2%
65 and up	0	0.0%	0	0.0%	0	0.0%	0	0.0%	0	0.0%	0	0.0%	0	0.0%	0	0.0%	0	0.0%
Full-Time Total	2	100.0%	79	100.0%	70	100.0%	7	100.0%	69	100.0%	67	100.0%	9	100.0%	64	100.0%	63	100.0%
FT Average Age	32.5		29.7		29.4		34.1		29.0		30.6		37.8		28.0		29.5	
Part-Time																		
Age 17 and under	0	0.0%	0	0.0%	1	1.5%	1	2.0%	2	2.9%	4	5.6%	0	0.0%	5	7.8%	5	8.8%
18-19	3	6.8%	7	14.0%	8	12.1%	2	4.1%	8	11.4%	9	12.7%	0	0.0%	7	10.9%	8	14.0%
20-21	3	6.8%	3	6.0%	7	10.6%	5	10.2%	7	10.0%	5	7.0%	3	9.7%	12	18.8%	10	17.5%
22-24	9	20.5%	12	24.0%	9	13.6%	7	14.3%	15	21.4%	10	14.1%	5	16.1%	10	15.6%	7	12.3%
25-29	11	25.0%	8	16.0%	16	24.2%	15	30.6%	16	22.9%	19	26.8%	11	35.5%	13	20.3%	12	21.1%
30-34	8	18.2%	10	20.0%	12	18.2%	4	8.2%	12	17.1%	10	14.1%	2	6.5%	8	12.5%	7	12.3%
35-39	2	4.5%	4	8.0%	7	10.6%	6	12.2%	3	4.3%	6	8.5%	5	16.1%	1	1.6%	1	1.8%
40-49	3	6.8%	4	8.0%	5	7.6%	8	16.3%	6	8.6%	6	8.5%	4	12.9%	6	9.4%	5	8.8%
50-64	5	11.4%	2	4.0%	1	1.5%	1	2.0%	1	1.4%	2	2.8%	0	0.0%	2	3.1%	1	1.8%
65 and up	0	0.0%	0	0.0%	0	0.0%	0	0.0%	0	0.0%	0	0.0%	1	3.2%	0	0.0%	1	1.8%
Part-Time Total	44	100.0%	50	100.0%	66	100.0%	49	100.0%	70	100.0%	71	100.0%	31	100.0%	64	100.0%	57	100.0%
PT Average Age	30.7		28.7		29.0		30.2		27.5		29.2		31.3		27.8		28.3	
All Students																		
Age 17 and under	0	0.0%	1	0.8%	1	0.7%	1	1.8%	3	2.2%	4	2.9%	0	0.0%	5	3.9%	5	4.2%
18-19	3	6.5%	16	12.4%	15	11.0%	2	3.6%	19	13.7%	16	11.6%	0	0.0%	11	8.6%	11	9.2%
20-21	3	6.5%	9	7.0%	14	10.3%	5	8.9%	17	12.2%	12	8.7%	3	7.5%	23	18.0%	20	16.7%
22-24	10	21.7%	26	20.2%	19	14.0%	7	12.5%	19	13.7%	17	12.3%	6	15.0%	22	17.2%	20	16.7%
25-29	11	23.9%	27	20.9%	37	27.2%	18	32.1%	31	22.3%	35	25.4%	12	30.0%	27	21.1%	19	15.8%
30-34	8	17.4%	17	13.2%	18	13.2%	4	7.1%	18	12.9%	20	14.5%	4	10.0%	25	19.5%	24	20.0%
35-39	2	4.3%	13	10.1%	14	10.3%	8	14.3%	14	10.1%	13	9.4%	7	17.5%	3	2.3%	6	5.0%
40-49	4	8.7%	14	10.9%	14	10.3%	10	17.9%	14	10.1%	15	10.9%	6	15.0%	9	7.0%	11	9.2%
50-64	5	10.9%	6	4.7%	4	2.9%	1	1.8%	4	2.9%	6	4.3%	1	2.5%	3	2.3%	3	2.5%
65 and up	0	0.0%	0	0.0%	0	0.0%	0	0.0%	0	0.0%	0	0.0%	1	2.5%	0	0.0%	1	0.8%
Total	46	100.0%	129	100.0%	136	100.0%	56	100.0%	139	100.0%	138	100.0%	40	100.0%	128	100.0%	120	100.0%
All Students Average Age	30.7		29.3		29.2		30.7		28.3		29.9		32.7		27.8		29.0	

Great Falls College Office of Institutional Research
Enrollment by Age of Native American Students

FT/PT - Age Range	2015-2016 Academic Year						2016-2017 Academic Year						2017-2018 Academic Year					
	Summer 2015 (EOT)		Fall 2015 (EOT)		Spring 2016 (EOT)		Summer 2016 (EOT)		Fall 2016 (EOT)		Spring 2017 (EOT)		Summer 2017 (EOT)		Fall 2017 (EOT)		Spring 2018 (EOT)	
	Count	Percent	Count	Percent	Count	Percent	Count	Percent	Count	Percent	Count	Percent	Count	Percent	Count	Percent	Count	Percent
Full-Time																		
Age 17 and under		0.0%		0.0%		0.0%		#DIV/0!		#DIV/0!		#DIV/0!		#DIV/0!		#DIV/0!		#DIV/0!
18-19		0.0%	5	11.9%	4	8.3%		#DIV/0!		#DIV/0!		#DIV/0!		#DIV/0!		#DIV/0!		#DIV/0!
20-21		0.0%	5	11.9%	7	14.6%		#DIV/0!		#DIV/0!		#DIV/0!		#DIV/0!		#DIV/0!		#DIV/0!
22-24	2	50.0%	6	14.3%	6	12.5%		#DIV/0!		#DIV/0!		#DIV/0!		#DIV/0!		#DIV/0!		#DIV/0!
25-29	2	50.0%	7	16.7%	9	18.8%		#DIV/0!		#DIV/0!		#DIV/0!		#DIV/0!		#DIV/0!		#DIV/0!
30-34		0.0%	8	19.0%	11	22.9%		#DIV/0!		#DIV/0!		#DIV/0!		#DIV/0!		#DIV/0!		#DIV/0!
35-39		0.0%	3	7.1%	2	4.2%		#DIV/0!		#DIV/0!		#DIV/0!		#DIV/0!		#DIV/0!		#DIV/0!
40-49		0.0%	5	11.9%	7	14.6%		#DIV/0!		#DIV/0!		#DIV/0!		#DIV/0!		#DIV/0!		#DIV/0!
50-64		0.0%	3	7.1%	2	4.2%		#DIV/0!		#DIV/0!		#DIV/0!		#DIV/0!		#DIV/0!		#DIV/0!
65 and up		0.0%		0.0%		0.0%		#DIV/0!		#DIV/0!		#DIV/0!		#DIV/0!		#DIV/0!		#DIV/0!
Full-Time Total	4	100.0%	42	100.0%	48	100.0%	0	#DIV/0!	0	#DIV/0!	0	#DIV/0!	0	#DIV/0!	0	#DIV/0!	0	#DIV/0!
FT Average Age	24.8		30.9		30.6													
Part-Time																		
Age 17 and under		0.0%	5	11.9%	11	20.0%		#DIV/0!		#DIV/0!		#DIV/0!		#DIV/0!		#DIV/0!		#DIV/0!
18-19	2	8.3%	3	7.1%	6	10.9%		#DIV/0!		#DIV/0!		#DIV/0!		#DIV/0!		#DIV/0!		#DIV/0!
20-21	2	8.3%	4	9.5%	2	3.6%		#DIV/0!		#DIV/0!		#DIV/0!		#DIV/0!		#DIV/0!		#DIV/0!
22-24	2	8.3%	6	14.3%	8	14.5%		#DIV/0!		#DIV/0!		#DIV/0!		#DIV/0!		#DIV/0!		#DIV/0!
25-29	5	20.8%	11	26.2%	12	21.8%		#DIV/0!		#DIV/0!		#DIV/0!		#DIV/0!		#DIV/0!		#DIV/0!
30-34	6	25.0%	6	14.3%	6	10.9%		#DIV/0!		#DIV/0!		#DIV/0!		#DIV/0!		#DIV/0!		#DIV/0!
35-39	1	4.2%	3	7.1%	5	9.1%		#DIV/0!		#DIV/0!		#DIV/0!		#DIV/0!		#DIV/0!		#DIV/0!
40-49	4	16.7%	2	4.8%	2	3.6%		#DIV/0!		#DIV/0!		#DIV/0!		#DIV/0!		#DIV/0!		#DIV/0!
50-64	1	4.2%	1	2.4%	2	3.6%		#DIV/0!		#DIV/0!		#DIV/0!		#DIV/0!		#DIV/0!		#DIV/0!
65 and up	1	4.2%	1	2.4%	1	1.8%		#DIV/0!		#DIV/0!		#DIV/0!		#DIV/0!		#DIV/0!		#DIV/0!
Part-Time Total	24	100.0%	42	100.0%	55	100.0%	0	#DIV/0!	0	#DIV/0!	0	#DIV/0!	0	#DIV/0!	0	#DIV/0!	0	#DIV/0!
PT Average Age	32.7		29.8		30.3													
All Students																		
Age 17 and under	0	0.0%	5	6.0%	11	10.7%	0	#DIV/0!	0	#DIV/0!	0	#DIV/0!	0	#DIV/0!	0	#DIV/0!	0	#DIV/0!
18-19	2	7.1%	8	9.5%	10	9.7%	0	#DIV/0!	0	#DIV/0!	0	#DIV/0!	0	#DIV/0!	0	#DIV/0!	0	#DIV/0!
20-21	2	7.1%	9	10.7%	9	8.7%	0	#DIV/0!	0	#DIV/0!	0	#DIV/0!	0	#DIV/0!	0	#DIV/0!	0	#DIV/0!
22-24	4	14.3%	12	14.3%	14	13.6%	0	#DIV/0!	0	#DIV/0!	0	#DIV/0!	0	#DIV/0!	0	#DIV/0!	0	#DIV/0!
25-29	7	25.0%	18	21.4%	21	20.4%	0	#DIV/0!	0	#DIV/0!	0	#DIV/0!	0	#DIV/0!	0	#DIV/0!	0	#DIV/0!
30-34	6	21.4%	14	16.7%	17	16.5%	0	#DIV/0!	0	#DIV/0!	0	#DIV/0!	0	#DIV/0!	0	#DIV/0!	0	#DIV/0!
35-39	1	3.6%	6	7.1%	7	6.8%	0	#DIV/0!	0	#DIV/0!	0	#DIV/0!	0	#DIV/0!	0	#DIV/0!	0	#DIV/0!
40-49	4	14.3%	7	8.3%	9	8.7%	0	#DIV/0!	0	#DIV/0!	0	#DIV/0!	0	#DIV/0!	0	#DIV/0!	0	#DIV/0!
50-64	1	3.6%	4	4.8%	4	3.9%	0	#DIV/0!	0	#DIV/0!	0	#DIV/0!	0	#DIV/0!	0	#DIV/0!	0	#DIV/0!
65 and up	1	3.6%	1	1.2%	1	1.0%	0	#DIV/0!	0	#DIV/0!	0	#DIV/0!	0	#DIV/0!	0	#DIV/0!	0	#DIV/0!
Total	28	100.0%	84	100.0%	103	100.0%	0	#DIV/0!	0	#DIV/0!	0	#DIV/0!	0	#DIV/0!	0	#DIV/0!	0	#DIV/0!
All Students Average Age	31.5		30.4		30.4													

Great Falls College Office of Institutional Research
 Native American Student Enrollment by County (excluding Bozeman campus)

2006-07 Academic Year	Summer 2006 (EOT)			Fall 2006 (EOT)			Spring 2007 (EOT)		
Category/County	Count	FTE	Credit Hours	Count	FTE	Credit Hours	Count	FTE	Credit Hours
<i>Cascade County</i>									
Cascade	23	9.87	148	58	41.80	627	53	37.93	569
% of Total	68%	66%	66%	71%	71%	71%	72%	69%	69%
<i>Great Falls College defined Service Region Counties</i>									
Fergus	0	0.00	0	1	0.47	7	0	0.00	0
Glacier	1	0.40	6	7	5.27	79	6	4.27	64
Hill	2	1.07	16	4	3.33	50	5	4.47	67
Lewis & Clark	0	0.00	0	0	0.00	0	2	1.53	23
Pondera	0	0.00	0	4	2.67	40	2	1.53	23
Teton	0	0.00	0	1	0.87	13	1	0.87	13
Toole	0	0.00	0	1	0.47	7	0	0.00	0
Total - Service Region	3	1.47	22	18	13.07	196	16	12.67	190
% of Total	9%	10%	10%	22%	22%	22%	22%	23%	23%
<i>Other Montana Counties (those with more than 100 students since 2006 listed, all others grouped in "Other")</i>									
Gallatin	0	0.00	0	1	0.80	12	1	0.80	12
Missoula	1	0.60	9	0	0.00	0	0	0.00	0
Other	3	1.53	23	4	2.67	40	4	3.60	54
Unknown	2	0.73	11	1	0.80	12	0	0.00	0
Total - Other MT Counties	6	2.87	43	6	4.27	64	5	4.40	66
% of Total	18%	19%	19%	7%	7%	7%	7%	8%	8%
<i>Out of State</i>									
Out of State	2	0.73	11	0	0.00	0	0	0.00	0
% of Total	6%	5%	5%	0%	0%	0%	0%	0%	0%
Grand Total	34	14.93	224	82	59.13	887	74	55.00	825

Note: This report excludes students of type "E" - Professional and Continuing Education.

Great Falls College Office of Institutional Research
 Native American Student Enrollment by County (excluding Bozeman campus)

2007-08 Academic Year	Summer 2007 (EOT)			Fall 2007 (EOT)			Spring 2008 (EOT)		
Category/County	Count	FTE	Credit Hours	Count	FTE	Credit Hours	Count	FTE	Credit Hours
<i>Cascade County</i>									
Cascade	16	6.87	103	48	32.80	492	47	34.73	521
% of Total	70%	72%	72%	70%	71%	71%	65%	71%	71%
<i>Great Falls College defined Service Region Counties</i>									
Fergus	0	0.00	0	1	0.87	13	1	1.13	17
Glacier	1	0.40	6	7	5.20	78	9	5.60	84
Hill	1	0.47	7	5	2.47	37	4	0.73	11
Lewis & Clark	1	0.47	7	2	1.07	16	2	1.20	18
Pondera	0	0.00	0	1	0.80	12	1	0.20	3
Teton	1	0.20	3	1	0.80	12	1	0.13	2
Toole	1	0.20	3	0	0.00	0	0	0.00	0
Total - Market Counties	5	1.73	26	17	11.20	168	18	9.00	135
% of Total	22%	18%	18%	25%	24%	24%	25%	19%	19%
<i>Other Montana Counties (those with more than 100 students since 2006 listed, all others grouped in "Other")</i>									
Gallatin	0	0.00	0	1	0.40	6	0	0.00	0
Yellowstone	0	0.00	0	1	0.87	13	2	1.40	21
Other	2	1.00	15	2	1.00	15	2	1.67	25
Unknown	0	0.00	0	0	0.00	0	1	0.80	12
Total - Other MT Counties	2	1.00	15	4	2.27	34	5	3.87	58
% of Total	9%	10%	10%	6%	5%	5%	7%	8%	8%
<i>Out of State</i>									
Out of State	0	0.00	0	0	0.00	0	2	1.00	15
% of Total	0%	0%	0%	0%	0%	0%	3%	2%	2%
Grand Total	23	9.60	144	69	46.27	694	72	48.60	729

Note: This report excludes students of type "E" - Professional and Continuing Education.

Great Falls College Office of Institutional Research
 Native American Student Enrollment by County (excluding Bozeman campus)

2008-09 Academic Year	Summer 2008 (EOT)			Fall 2008 (EOT)			Spring 2009 (EOT)		
Category/County	Count	FTE	Credit Hours	Count	FTE	Credit Hours	Count	FTE	Credit Hours
<i>Cascade County</i>									
Cascade	19	7.07	106	62	44.87	673	61	44.20	663
% of Total	68%	67%	67%	71%	72%	72%	73%	74%	74%
<i>Great Falls College defined Service Region Counties</i>									
Fergus	0	0.00	0	1	0.87	13	2	1.60	24
Glacier	3	1.20	18	7	5.40	81	4	2.87	43
Hill	2	0.40	6	1	1.07	16	2	1.07	16
Lewis & Clark	0	0.00	0	2	1.73	26	3	1.93	29
Pondera	2	1.07	16	4	2.53	38	4	2.47	37
Teton	1	0.40	6	2	0.47	7	1	0.60	9
Total - Market Counties	8	3.07	46	17	12.07	181	16	10.53	158
% of Total	29%	29%	29%	20%	19%	19%	19%	18%	18%
<i>Other Montana Counties (those with more than 100 students since 2006 listed, all others grouped in "Other")</i>									
Gallatin	0	0.00	0	1	0.60	9	0	0.00	0
Yellowstone	0	0.00	0	1	0.73	11	2	2.27	34
Other	1	0.47	7	4	3.27	49	4	3.00	45
Unknown	0	0.00	0	1	0.80	12	0	0.00	0
Total - Other MT Counties	1	0.47	7	7	5.40	81	6	5.27	79
% of Total	4%	4%	4%	8%	9%	9%	7%	9%	9%
<i>Out of State</i>									
Out of State	0	0.00	0	1	0.40	6	0	0.00	0
% of Total	0%	0%	0%	1%	1%	1%	0%	0%	0%
Grand Total	28	10.60	159	87	62.73	941	83	60.00	900

Note: This report excludes students of type "E" - Professional and Continuing Education.

Great Falls College Office of Institutional Research
 Native American Student Enrollment by County (excluding Bozeman campus)

2009-10 Academic Year Category/County	Summer 2009 (EOT)			Fall 2009 (EOT)			Spring 2010 (EOT)		
	Count	FTE	Credit Hours	Count	FTE	Credit Hours	Count	FTE	Credit Hours
<i>Cascade County</i>									
Cascade	22	9.47	142	84	62.93	944	89	67.07	1,006
% of Total	73%	72%	72%	75%	79%	79%	76%	81%	81%
<i>Great Falls College defined Service Region Counties</i>									
Fergus	1	0.60	9	0	0.00	0	0	0.00	0
Glacier	1	0.47	7	7	5.40	81	7	4.93	74
Hill	1	0.07	1	1	0.60	9	2	1.00	15
Lewis & Clark	1	0.73	11	3	1.80	27	4	2.07	31
Pondera	1	0.53	8	3	0.87	13	4	2.60	39
Teton	0	0.00	0	1	0.20	3	1	0.40	6
Toole	0	0.00	0	1	0.47	7	1	0.73	11
Total - Market Counties	5	2.40	36	16	9.33	140	19	11.73	176
% of Total	17%	18%	18%	14%	12%	12%	16%	14%	14%
<i>Other Montana Counties (those with more than 100 students since 2006 listed, all others grouped in "Other")</i>									
Missoula	0	0.00	0	1	0.87	13	1	1.07	16
Yellowstone	0	0.00	0	0	0.00	0	2	1.20	18
Other	3	1.27	19	11	6.27	94	6	1.87	28
Total - Other MT Counties	3	1.27	19	12	7.13	107	9	4.13	62
% of Total	10%	10%	10%	11%	9%	9%	8%	5%	5%
<i>Out of State</i>									
Out of State	0	0.00	0	0	0.00	0	0	0.00	0
% of Total	0%	0%	0%	0%	0%	0%	0%	0%	0%
Grand Total	30	13.13	197	112	79.40	1,191	117	82.93	1,244

Note: This report excludes students of type "E" - Professional and Continuing Education.

Great Falls College Office of Institutional Research
Native American Student Enrollment by County

2010-11 Academic Year	Summer 2010 (EOT)			Fall 2010 (EOT)			Spring 2011 (EOT)		
Category/County	Count	FTE	Credit Hours	Count	FTE	Credit Hours	Count	FTE	Credit Hours
<i>Cascade County</i>									
Cascade	33	13.33	200	92	67.67	1,015	91	68.80	1,032
% of Total	70%	70%	70%	74%	74%	74%	73%	74%	74%
<i>Great Falls College defined Service Region Counties</i>									
Choteau	0	0.00	0	1	0.13	2	0	0.00	0
Fergus	0	0.00	0	0	0.00	0	1	0.87	13
Glacier	4	2.07	31	15	11.87	178	16	12.20	183
Hill	1	0.53	8	4	3.13	47	1	0.87	13
Lewis & Clark	2	0.53	8	1	0.80	12	4	2.27	34
Pondera	1	0.40	6	3	0.80	12	0	0.00	0
Teton	0	0.00	0	2	1.07	16	1	0.40	6
Total - Market Counties	8	3.53	53	26	17.80	267	23	16.60	249
% of Total	17%	18%	18%	21%	19%	19%	19%	18%	18%
<i>Other Montana Counties (those with more than 100 students since 2006 listed, all others grouped in "Other")</i>									
Gallatin	1	0.27	4	0	0.00	0	0	0.00	0
Missoula	1	0.47	7	1	1.00	15	0	0.00	0
Yellowstone	0	0.00	0	2	1.60	24	2	1.60	24
Other	4	1.53	23	4	3.33	50	6	4.93	74
Total - Other MT Counties	6	2.27	34	7	5.93	89	8	6.53	98
% of Total	13%	12%	12%	6%	6%	6%	6%	7%	7%
<i>Out of State</i>									
Out of State	0	0.00	0	0	0.00	0	2	1.40	21
% of Total	0%	0%	0%	0%	0%	0%	2%	2%	2%
Grand Total	47	19.13	287	125	91.40	1,371	124	93.33	1,400

Note: This report excludes students of type "E" - Professional and Continuing Education.

Great Falls College Office of Institutional Research
Enrollment by County

2011-12 Academic Year Category/County	Summer 2011 (EOT)			Fall 2011 (EOT)			Spring 2012 (EOT)		
	Count	FTE	Credit Hours	Count	FTE	Credit Hours	Count	FTE	Credit Hours
<i>Cascade County</i>									
Cascade	39	15.87	238	87	63.87	958	93	66.47	997
% of Total	67%	67%	67%	68%	67%	67%	69%	69%	69%
<i>Great Falls College defined Service Region Counties</i>									
Fergus	0	0.00	0	1	0.93	14	0	0.00	0
Glacier	12	5.53	83	17	14.20	213	17	13.87	208
Hill	0	0.00	0	2	1.60	24	1	0.80	12
Lewis & Clark	2	0.87	13	1	0.47	7	1	0.80	12
Pondera	0	0.00	0	5	3.47	52	5	3.33	50
Teton	1	0.40	6	2	1.73	26	1	0.80	12
Total - Market Counties	15	6.80	102	28	22.40	336	25	19.60	294
% of Total	26%	29%	29%	22%	24%	24%	19%	20%	20%
<i>Other Montana Counties (those with more than 100 students since 2006 listed, all others grouped in "Other")</i>									
Gallatin	0	0.00	0	1	0.20	3	0	0.00	0
Missoula	0	0.00	0	1	0.20	3	1	0.40	6
Yellowstone	1	0.20	3	2	1.53	23	2	1.40	21
Other	3	0.73	11	7	5.80	87	13	8.07	121
Total - Other MT Counties	4	0.93	14	11	7.73	116	16	9.87	148
% of Total	7%	4%	4%	9%	8%	8%	12%	10%	10%
<i>Out of State</i>									
Out of State	0	0.00	0	2	1.27	19	1	0.87	13
% of Total	0%	0%	0%	2%	1%	1%	1%	1%	1%
Grand Total	58	23.60	354	128	95.27	1,429	135	96.80	1,452

Note: This report excludes students of type "E" - Professional and Continuing Education.

Great Falls College Office of Institutional Research
Enrollment by County

2012-13 Academic Year Category/County	Summer 2012 (EOT)			Fall 2012 (EOT)			Spring 2013 (EOT)		
	Count	FTE	Credit Hours	Count	FTE	Credit Hours	Count	FTE	Credit Hours
<i>Cascade County</i>									
Cascade	36	14.67	220	89	65.00	975	98	69.00	1,035
% of Total	78%	75%	75%	69%	68%	68%	72%	72%	72%
<i>Great Falls College defined Service Region Counties - see note below</i>									
Glacier	5	2.20	33	20	16.13	242	18	12.80	192
Pondera	2	0.93	14	4	2.80	42	6	4.20	63
Total - Market Counties	7	3.13	47	24	18.93	284	24	17.00	255
% of Total	15%	16%	16%	19%	20%	20%	18%	18%	18%
<i>Other Montana Counties (those with more than 100 students since 2006 listed, all others grouped in "Other")</i>									
Hill	1	0.40	6	3	2.87	43	3	2.47	37
Missoula	0	0.00	0	2	1.47	22	2	1.47	22
Yellowstone	0	0.00	0	2	1.00	15	1	1.00	15
Other	2	1.40	21	8	5.13	77	6	3.93	59
Total - Other MT Counties	3	1.80	27	15	10.47	157	12	8.87	133
% of Total	7%	9%	9%	12%	11%	11%	9%	9%	9%
<i>Out of State</i>									
Out of State	0	0.00		1	0.93	14	2	1.13	17
% of Total	0%	0%	0%	1%	1%	1%	1%	1%	1%
Grand Total	46	19.60	294	129	95.33	1,430	136	96.00	1,440

Note: In 2012-2013 Hill and Lewis & Clark counties were removed from the service region
Note: This report excludes students of type "E" - Professional and Continuing Education.

Great Falls College Office of Institutional Research
Enrollment by County

2013-14 Academic Year Category/County	Summer 2013 (EOT)			Fall 2013 (EOT)			Spring 2014 (EOT)		
	Count	FTE	Credit Hours	Count	FTE	Credit Hours	Count	FTE	Credit Hours
<i>Cascade County</i>									
Cascade	43	20.47	307	99	70.40	1,056	99	65.87	988
% of Total	77%	78%	78%	71%	71%	71%	72%	69%	69%
<i>Great Falls College defined Service Region Counties</i>									
Glacier	5	1.67	25	12	9.00	135	12	8.60	129
Judith Basin	0	0.00	0	1	0.93	14	1	0.87	13
Pondera	1	0.93	14	6	4.93	74	5	4.07	61
Toole	0	0.00	0	1	0.87	13	2	1.33	20
Total - Market Counties	6	2.60	39	20	15.73	236	20	14.87	223
% of Total	11%	10%	10%	14%	16%	16%	14%	16%	16%
<i>Other Montana Counties (those with more than 100 students since 2006 listed, all others grouped in "Other")</i>									
Hill	2	0.73	11	3	1.93	29	3	2.27	34
Missoula	1	0.20	3	4	2.53	38	3	2.00	30
Yellowstone	1	0.80	12	2	1.20	18	2	1.27	19
Other	3	1.40	21	11	7.73	116	10	8.00	120
Total - Other MT Counties	7	3.13	47	20	13.40	201	18	13.53	203
% of Total	13%	12%	12%	14%	13%	13%	13%	14%	14%
<i>Out of State</i>									
Out of State	0	0.00	0	0	0.00	0	1	1.20	18
% of Total	0%	0%	0%	0%	0%	0%	1%	1%	1%
Grand Total	56	26.20	393	139	99.53	1,493	138	95.47	1,432

Note: This report excludes students of type "E" - Professional and Continuing Education.

Great Falls College Office of Institutional Research
Enrollment by County

2014-15 Academic Year Category/County	Summer 2014 (EOT)			Fall 2014 (EOT)			Spring 2015 (EOT)		
	Count	FTE	Credit Hours	Count	FTE	Credit Hours	Count	FTE	Credit Hours
<i>Cascade County</i>									
Cascade	28	16.20	243	86	59.80	897	84	58.07	871
% of Total	70%	75%	75%	66%	63%	63%	70%	68%	68%
<i>Great Falls College defined Service Region Counties</i>									
Glacier	4	1.53	23	10	8.13	122	10	8.07	121
Judith Basin	0	0.00		1	0.93	14		0.00	
Pondera	0	0.00			0.00			0.00	
Toole	0	0.00			0.00		1	0.40	6
Total - Market Counties	4	1.53	23	11	9.07	136	11	8.47	127
% of Total	10%	7%	7%	8%	10%	10%	9%	10%	10%
<i>Other Montana Counties</i>									
Hill	1	0.47	7	7	5.40	81	6	3.60	54
Missoula		0.00		2	1.20	18	2	1.33	20
Yellowstone		0.00		3	1.93	29	1	0.80	12
Other	6	3.00	45	20	14.80	222	14	11.67	175
Total - Other MT Counties	7	3.47	52	32	23.33	350	23	17.40	261
% of Total	18%	16%	16%	24%	25%	25%	19%	20%	20%
<i>Out of State</i>									
Out of State	1	0.47	7	2	2.40	36	2	2.00	30
% of Total	3%	2%	2%	2%	3%	3%	2%	2%	2%
Grand Total	40	21.67	325	131	94.60	1,419	120	85.93	1,289

Note: This report excludes students of type "E" - Professional and Continuing Education.

Great Falls College Office of Institutional Research
Enrollment by County

2015-16 Academic Year Category/County	Summer 2015 (EOT)			Fall 2015 (EOT)			Spring 2016 (EOT)		
	Count	FTE	Credit Hours	Count	FTE	Credit Hours	Count	FTE	Credit Hours
<i>Cascade County</i>									
Cascade	20	9.07	136	59	38.27	574	72	44.67	670
% of Total	71%	69%	69%	70%	69%	69%	72%	69%	69%
<i>Great Falls College defined Service Region Counties</i>									
Chouteau				1	0.07	1	1	0.20	3
Glacier	3	1.73	26	8	4.93	74	6	3.93	59
Judith Basin									
Pondera				2	1.67	25	3	2.47	37
Teton				1	0.20	3	2	1.53	23
Toole									
Total - Market Counties	3	1.73	26	12	6.87	103	11	7.93	119
% of Total	11%	13%	13%	14%	12%	12%	11%	12%	12%
<i>Other Montana Counties</i>									
Flathead				1		13	1	0.87	13
Gallatin				1		12	1	0.93	14
Hill				2	1.87	28	3	2.47	37
Missoula				1	0.20	3	2	0.47	7
Yellowstone				1	0.80	12	1	1.07	16
Other	4	2.00	30	6	5.33	80	9	6.60	99
Total - Other MT Counties	4	2.00	30	12	9.87	148	15	10.60	159
% of Total	14%	15%	15%	14%	18%	18%	15%	16%	16%
<i>Out of State</i>									
Out of State	1	0.40	6	1	0.80	12	2	1.40	21
% of Total	4%	3%	3%	1%	1%	1%	2%	2%	2%
Grand Total	28	13.20	198	84	55.80	837	100	64.60	969

Note: This report excludes students of type "E" - Professional and Continuing Education.

Great Falls College MSU Office of Institutional Research

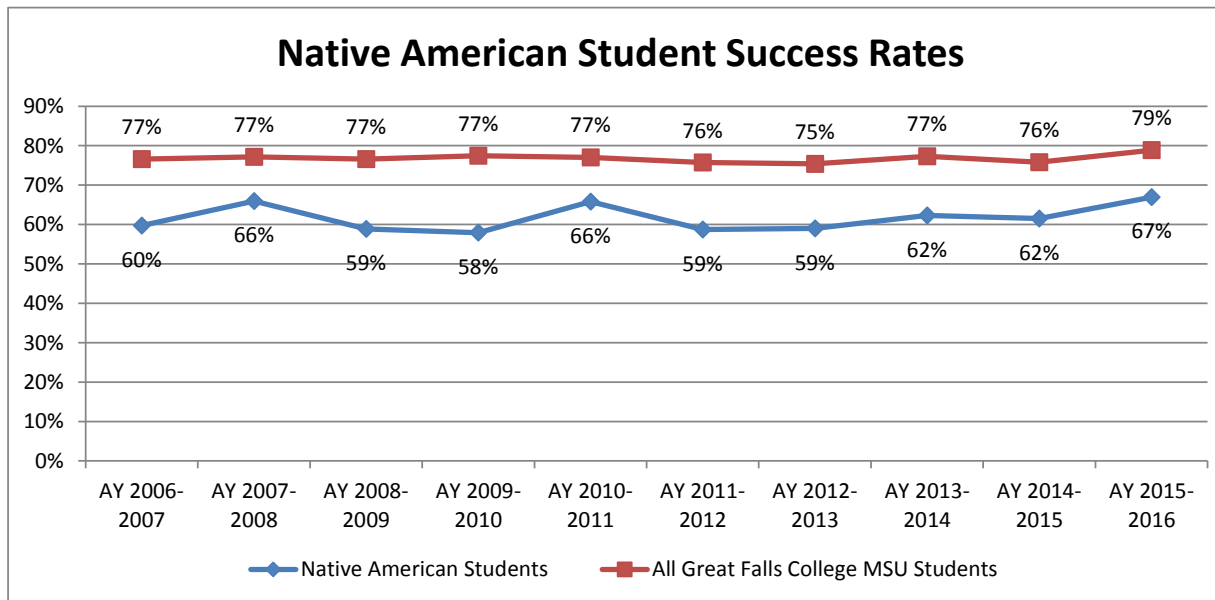
Native American Student Success

Note - This reports on the number of courses students took and succeeded in during the respective academic years.

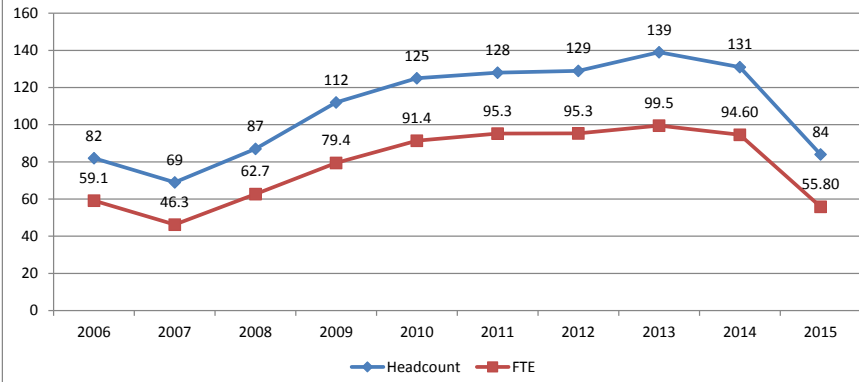
Grades are as of end-of-term and are subject to change.

Null grades are excluded from this report.

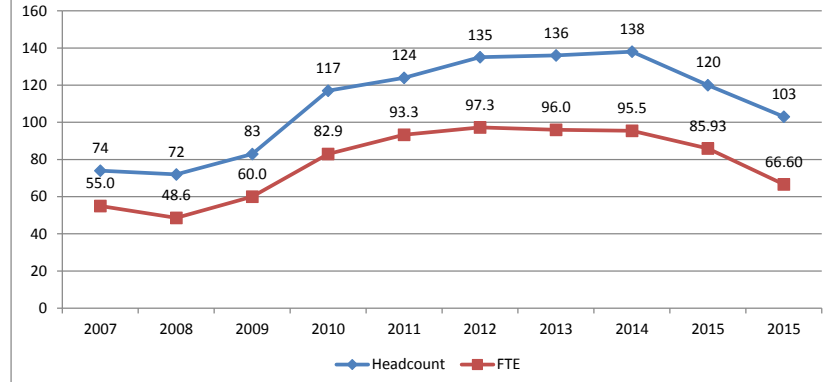
Academic Year	Native American Students			All Great Falls College MSU Students		
	Course Enrollments	# Successful	% Successful	Course Enrollments	# Successful	% Successful
AY 2006-2007	646	386	60%	10,214	7,826	77%
AY 2007-2008	534	352	66%	9,971	7,696	77%
AY 2008-2009	678	399	59%	11,217	8,594	77%
AY 2009-2010	879	509	58%	13,053	10,110	77%
AY 2010-2011	982	646	66%	13,763	10,606	77%
AY 2011-2012	1,129	663	59%	14,249	10,793	76%
AY 2012-2013	1,049	619	59%	13,391	10,098	75%
AY 2013-2014	1,139	710	62%	13,642	10,546	77%
AY 2014-2015	1,011	622	62%	12,426	9,417	76%
AY 2015-2016	641	429	67%	11,403	8,992	79%



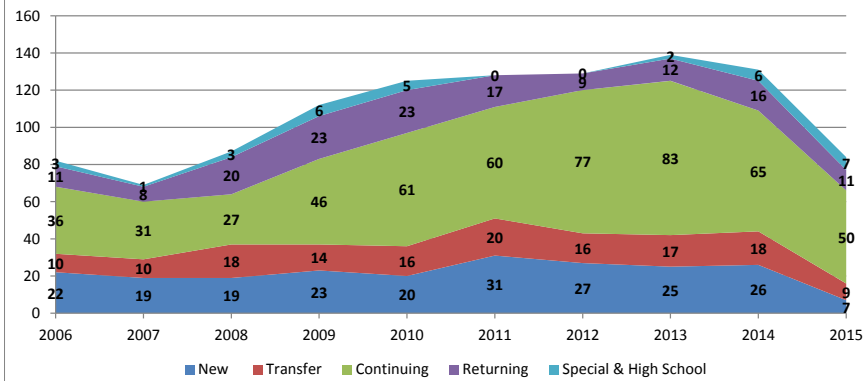
**Native American Students
Fall Term Headcount and FTE**



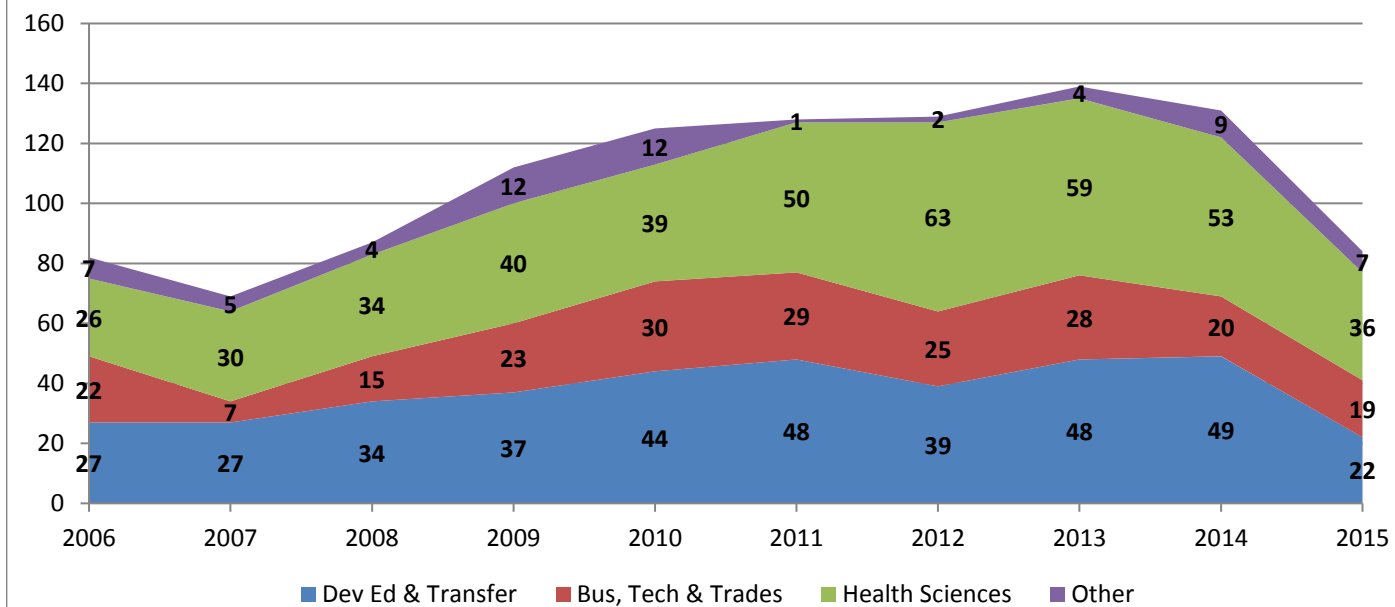
**Native American Students
Spring Term Headcount and FTE**



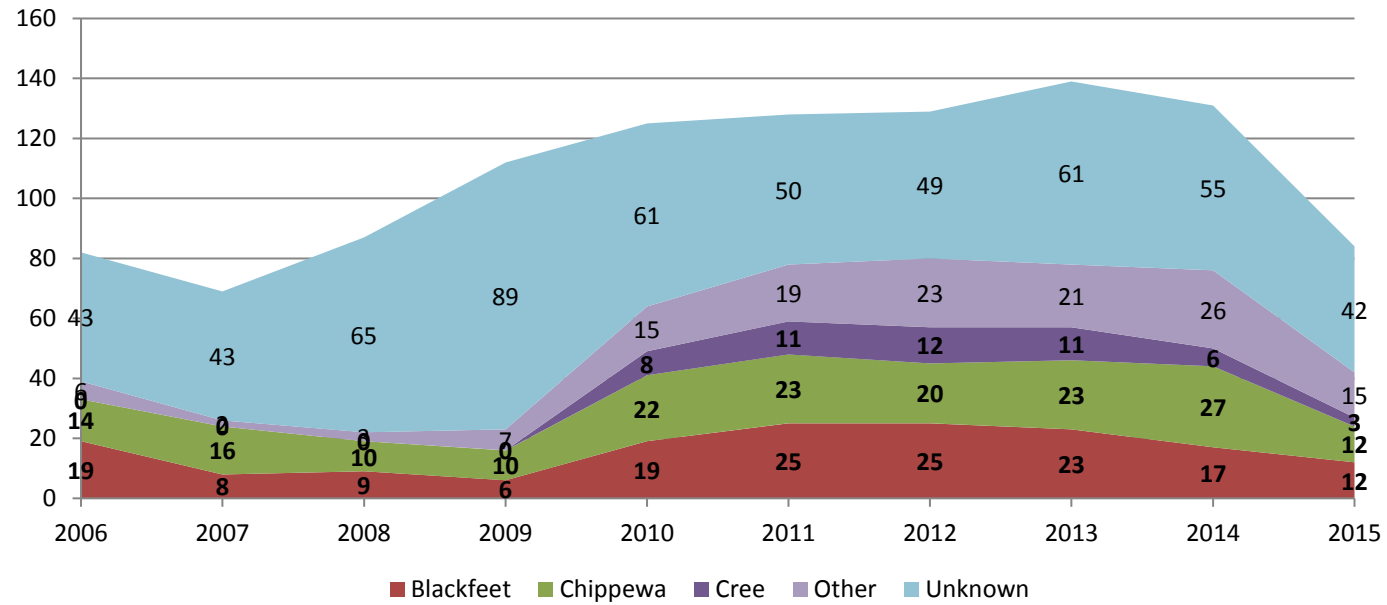
**Native American Students
Fall Term Headcount by Student Type**



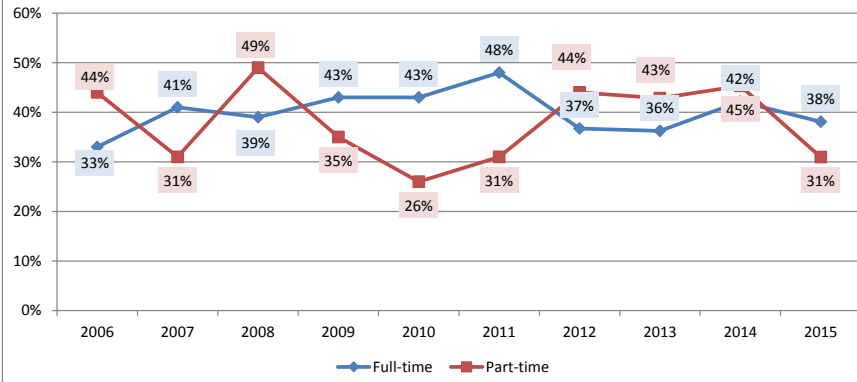
Native American Students Fall Term Headcount by Division



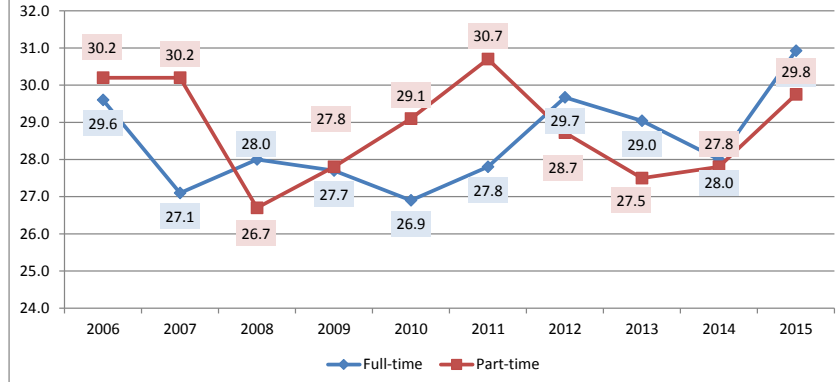
Native American Students Fall Term Headcount by Tribe



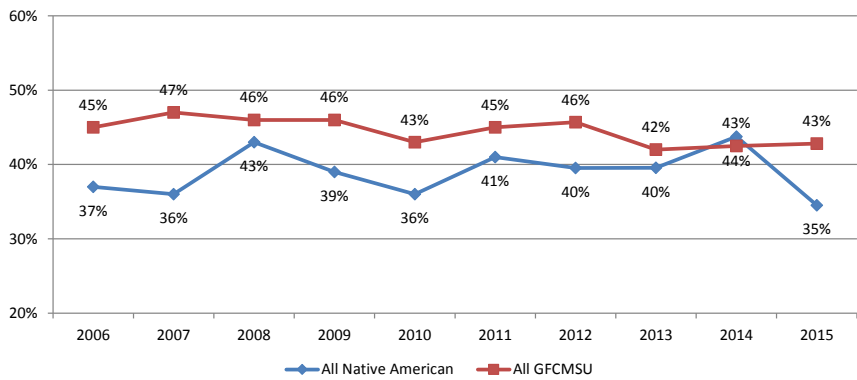
**Native American Students
Fall Term Percent Traditional Students**



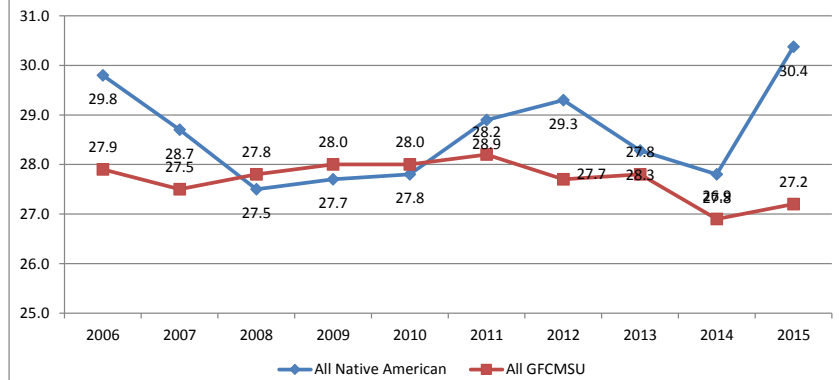
**Native American Students
Fall Term Average Age**



**Native American Students compared to all GFCMSU
Fall Term Percent Traditional Students**



**Native American Students compared to all GFCMSU
Fall Term Average Age**



Native American Students Fall Term Enrollment by County

