



Montana Family Education Savings Program Mapping Recommendations

Board of Regents Supporting Material

May 27~28, 2010 Meeting



Portfolio Optimization Mapping

Approved April 21, 2010

by the MFESP Oversight Committee



| Current Pacific Life Portfolio Optimization Investment Option | New Investment Option |
|---|--|
| Portfolio Optimization Conservative | → Vanguard LifeStrategy Conservative Growth Fund |
| Portfolio Optimization Moderate-Conservative | → Vanguard LifeStrategy Conservative Growth Fund |
| Portfolio Optimization Moderate | → Vanguard LifeStrategy Moderate Growth Fund |
| Portfolio Optimization Moderate-Aggressive | → Comparable blend of Vanguard LifeStrategy Moderate Growth Fund & Vanguard LifeStrategy Growth Fund |
| Portfolio Optimization Aggressive | → Vanguard LifeStrategy Growth Fund |

Portfolio Optimization Conservative Mapping MFESP's Alternative to the Oversight Committee's approved mapping



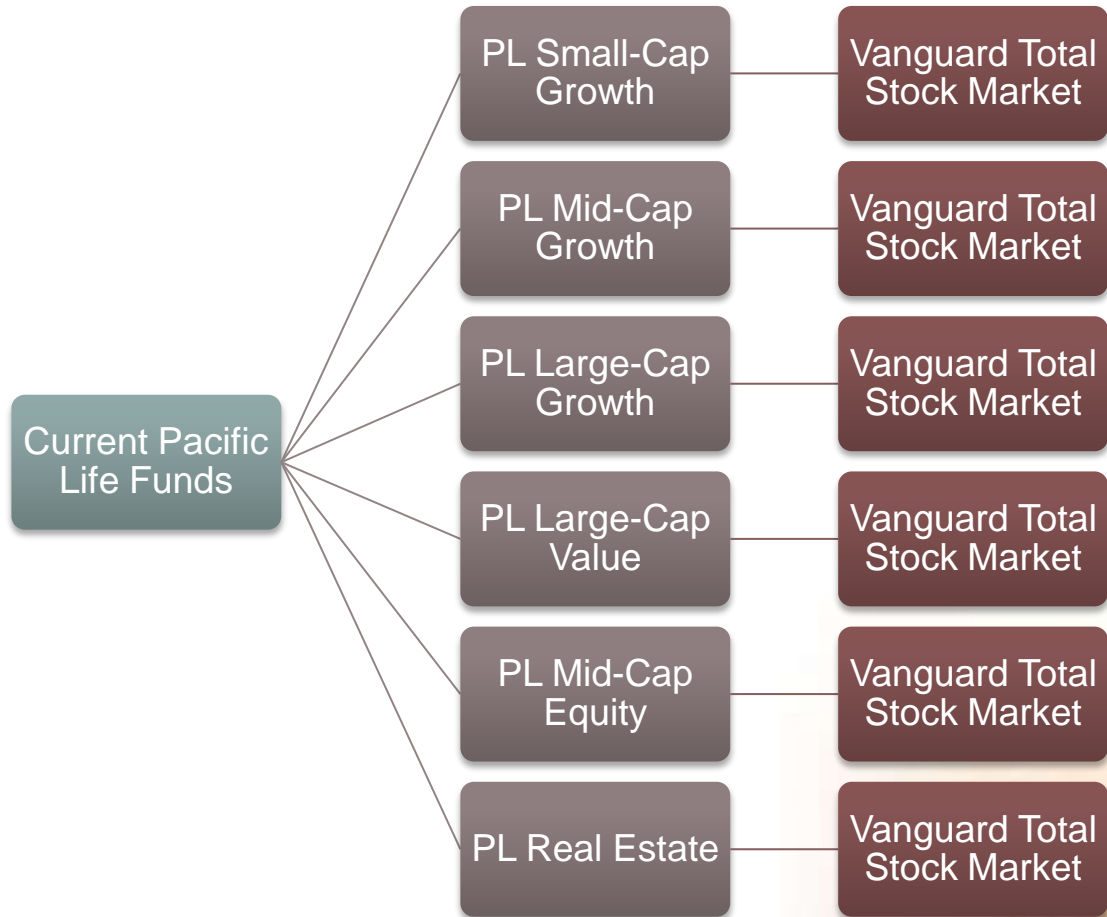
| Current Pacific Life Portfolio Optimization Investment Option | New Investment Option |
|---|--|
| Portfolio Optimization Conservative | College Savings Bank savings account with increased basis points to 1% |



Individual Funds Mapping

(transferring from the College Savings Bank Savings Account)

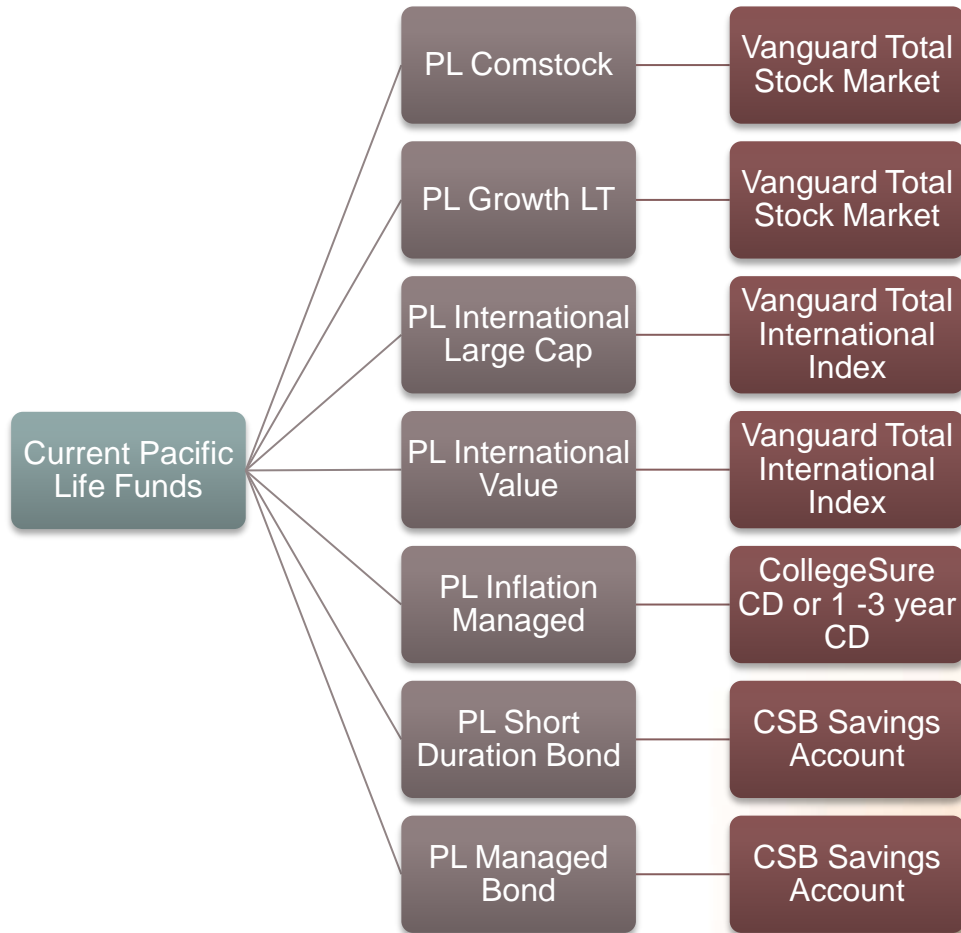
Approved April 21, 2010 by the MFESP Oversight Committee





Individual Funds Mapping

(transferring from the College Savings Bank Savings Account)
Approved April 21, 2010 by the MFESP Oversight Committee



Money Market Mapping

Approved April 21, 2010

by the MFESP Oversight Committee



PL Money
Market

CSB Savings
Account

