



Option B, 5-Story



Montana Tech - Student Dorm Planning

November 22, 2011



15,055 SF
 6 - QUADS (24 BEDROOMS)
 3 - DOUBLES (6 BEDROOMS)
 4 - SINGLES (4 BEDROOMS)
 1 - RD (1 BEDROOM)
 35 TOTAL BEDROOMS



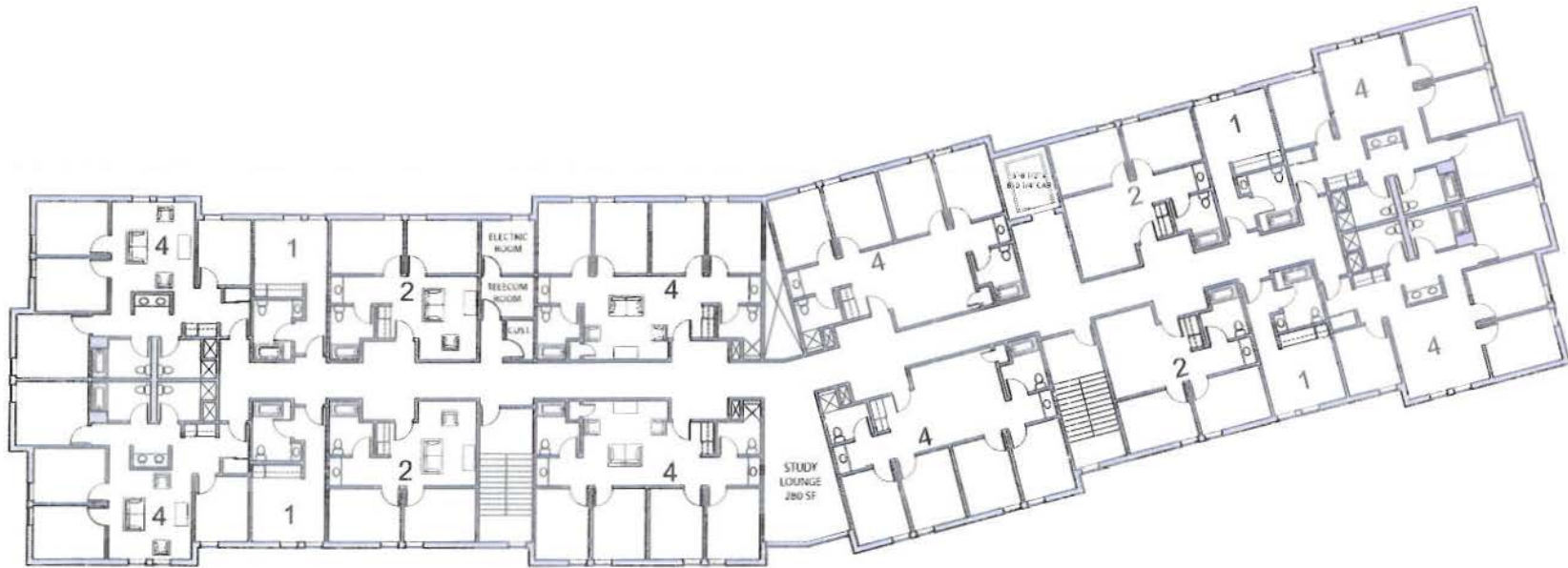
Option B - First Floor Plan



Scale: 1" = 20'-0"

Montana Tech - Student Dorm Planning

November 22, 2011



15,055 SF
 8 - QUADS (32 BEDROOMS)
 4 - DOUBLES (8 BEDROOMS)
 4 - SINGLES (4 BEDROOMS)
 44 TOTAL BEDROOMS PER FLOOR

Totals:
75,275 SF
 38 - QUADS (152 BEDROOMS - 72%)
 19 - DOUBLES (38 BEDROOMS - 18%)
 20 - SINGLES (20 BEDROOMS - 10%)
 1 - RESIDENT DIRECTOR (1 BEDROOM)
TOTAL BEDROOMS 211



Option B - Second thru Fifth Floor Plans



scale: 1" = 20'-0"

Montana Tech - Student Dorm Planning

November 22, 2011