

# K20 Partnerships with MSP Grants

Dr. Ken Miller

Montana State University-Billings

Dr. Georgia A. Cobbs

The University of Montana-Missoula

# Building on the Past: Preparing for the Future

BUILDING ON THE PAST: PREPARING FOR THE FUTURE

**MontanaTech**  
THE UNIVERSITY OF MONTANA



\*MPRES™

\* MONTANA PARTNERSHIP WITH REGIONS FOR EXCELLENCE IN STEM

# Current Partnerships

## Higher Education and K12 Education

- **Statewide Partnerships with Universities and K12 Education**
  - ① **STEM Leadership and STEM Taskforce** – sponsored by OPI
  - ② **MPRES Math Science Partnership Grant** – Next Generation Science Standards
  - ③ **STREAM Math Science Partnership Grant** – Common Core Mathematics
  - ④ **Higher Education Consortium HEC** – Higher Education Collaboration with OPI in Special Education and Regular Education
- **Regional Partnerships with Higher Education and K12 Education**
  - ① Colleges of Education rely heavily on K12 districts to provide residency opportunities for our prospective teachers.
  - ② Universities create partnerships with various K12 Consortia like Small Schools Alliance or Golden Triangle

# Core Partners in MPRES

- 1) Cfwep.Org, (Clark Fork Watershed Education Program), Montana Tech, U of Montana
- 2) Montana State University-Billings College of Education, Science Education
- 3) Montana State University-Bozeman Department of Education, Science Education and Burns Technology Center (BTC)
- 4) Montana Tech, University of Montana, College of Letters, Sciences, and Prof. Studies
- 5) Montana Educational Consortium (MEC)
- 6) Alliance for Curriculum Enhancement (ACE)
- 7) Education Northwest (EDNW)
- 8) Cedar Lake Research
- 9) Billings Public Schools
- 10) Butte Public Schools
- 11) Prairie Educational Service Area (PESA)
- 12) Montana North Central Educational Service Region (MNCESR)
- 13) Montana Regional Education Service Area III (MRESA3)
- 14) Montana Region IV Educational Service Agency (RESA4U)
- 15) Western Montana Comprehensive System for Prof. Development (WM-CSPD)



# STREAM Leadership Team

**Jennie Luebeck, MSU-Bozeman**

**Georgia Cobbs, UM-Missoula**

**Brian Lindaman, MSU-Bozeman**

**Lisa Scott, Billings Public Schools**

***Project Manager***



# Core Planning Team

- \* All projects must have a core planning team in place to oversee the general design and implementation of the project. At a minimum the project will consist of:
  - \* A teacher from one or more of the partner LEAs
  - \* A building principal or district superintendent
  - \* A participating STEM faculty member
  - \* Directors or designees from two or more RESAs
  - \* A science or math education faculty member
  - \* The project evaluator

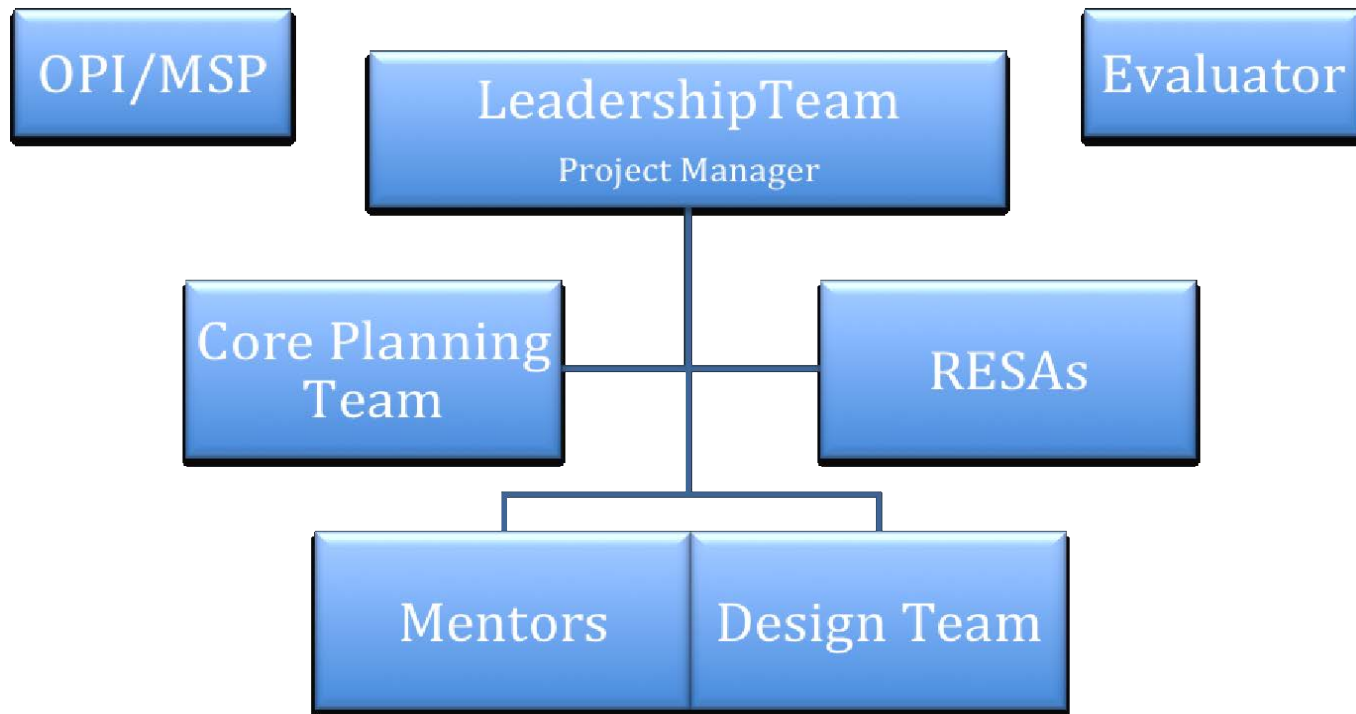
# The STREAM Partnership

- \* 16 School Districts
  - \* AA, A, B, C
- \* 5 RESAs
- \* 2 Universities
- \* 2 Non-Profit Organizations
- \* 1 Science Project
- \* 3 Leadership Staff
- \* 2 Evaluation Staff
- \* 1 Project Manager

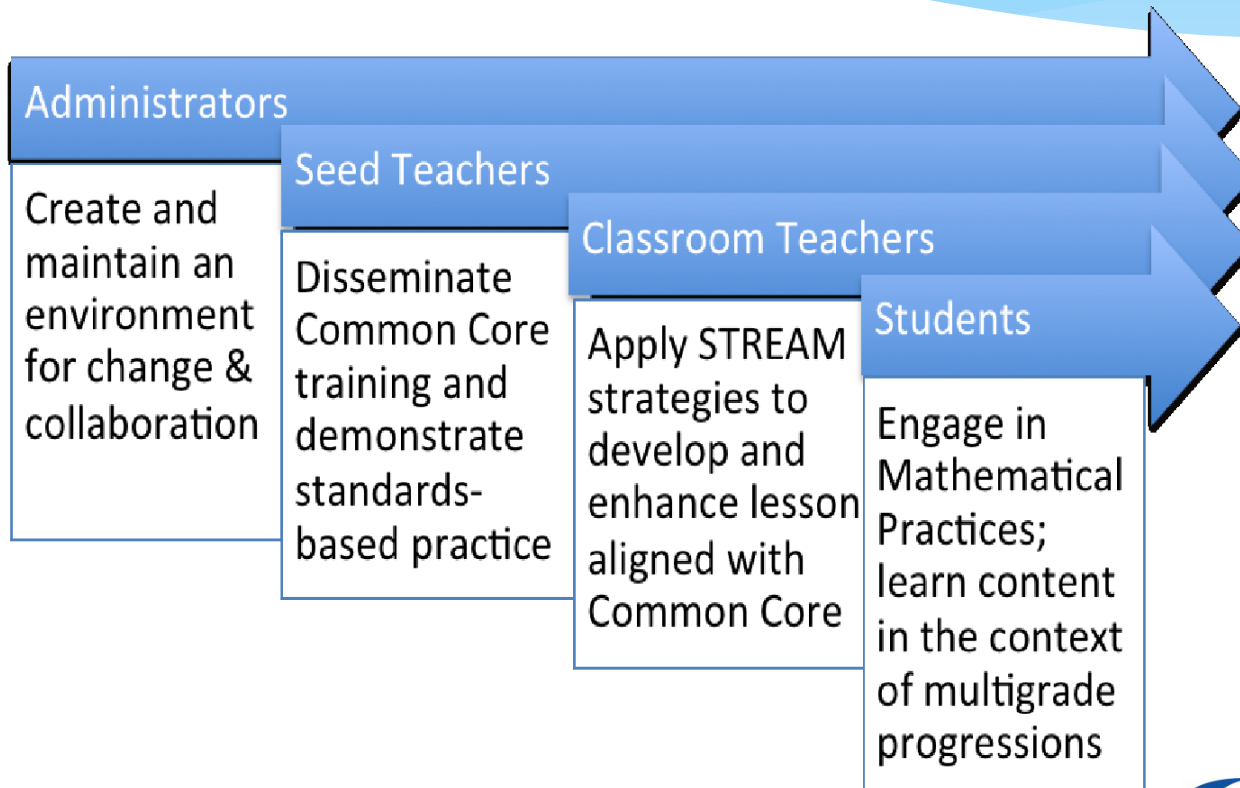




# Project Support



# Participants



# Questions