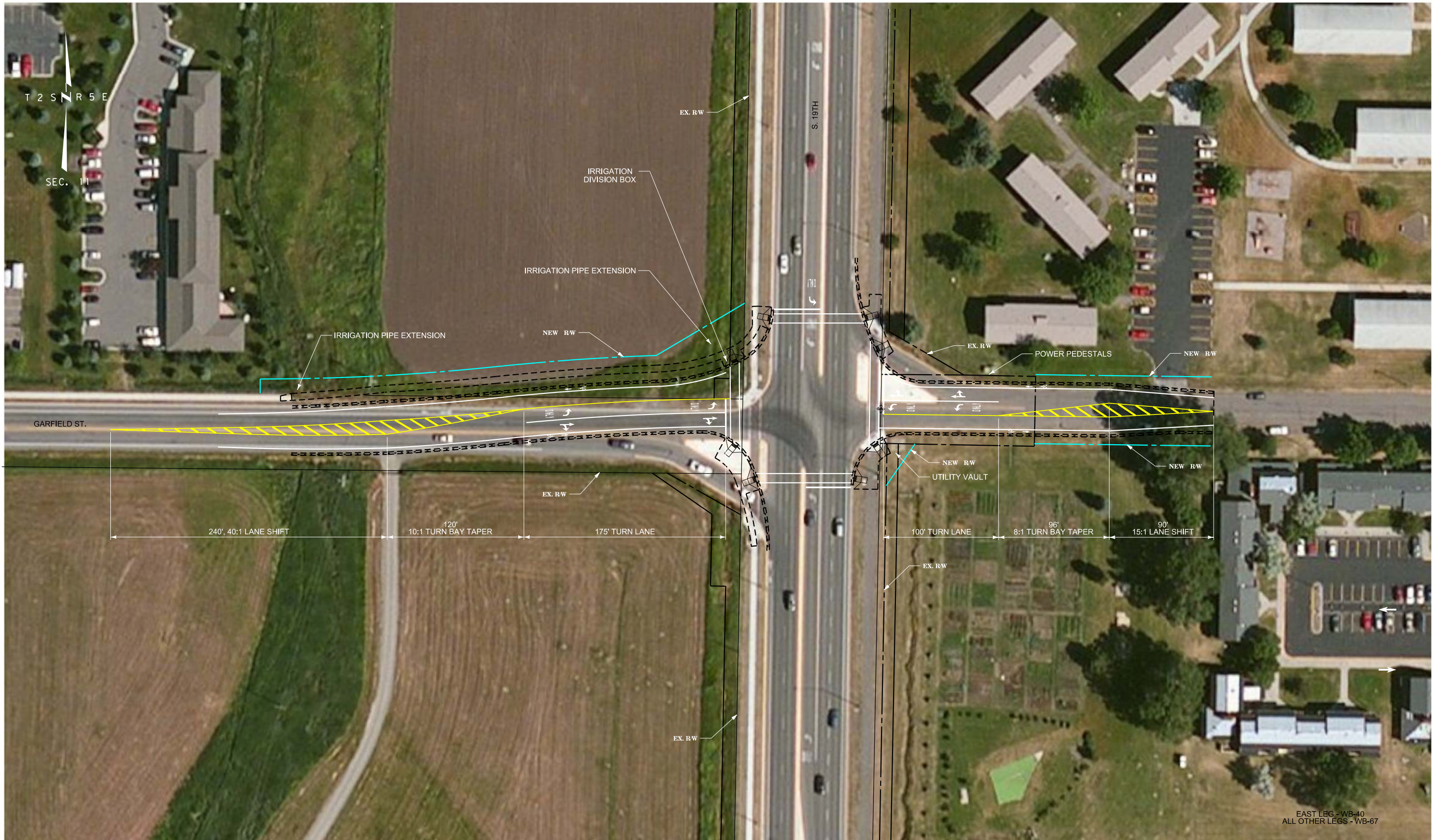


GARFIELD ST./S. 19TH INTERSECTION

ITEM 164-2006-R0914 Attachment



EAST LEG - WB-40
ALL OTHER LEGS - WB-67

RPA ROBERT PECCIA & ASSOCIATES
CIVIL ENGINEERING | PLANNING | SURVEYING | LANDSCAPE ARCHITECTURE

3					ROAD PLANS	COLLEGE-MAIN TO S 19TH-BOZEMAN	STPU 1210(2)
2	MDT MONTANA DEPARTMENT OF TRANSPORTATION	...17426000RDPLPZ01_garfield.DGN	DESIGNED BY	REVIEWED BY	GALLATIN COUNTY	CSF# 0,999433377	UPN 7426000
		8/14/2014	5:20:43 PM	april			1 OF 1