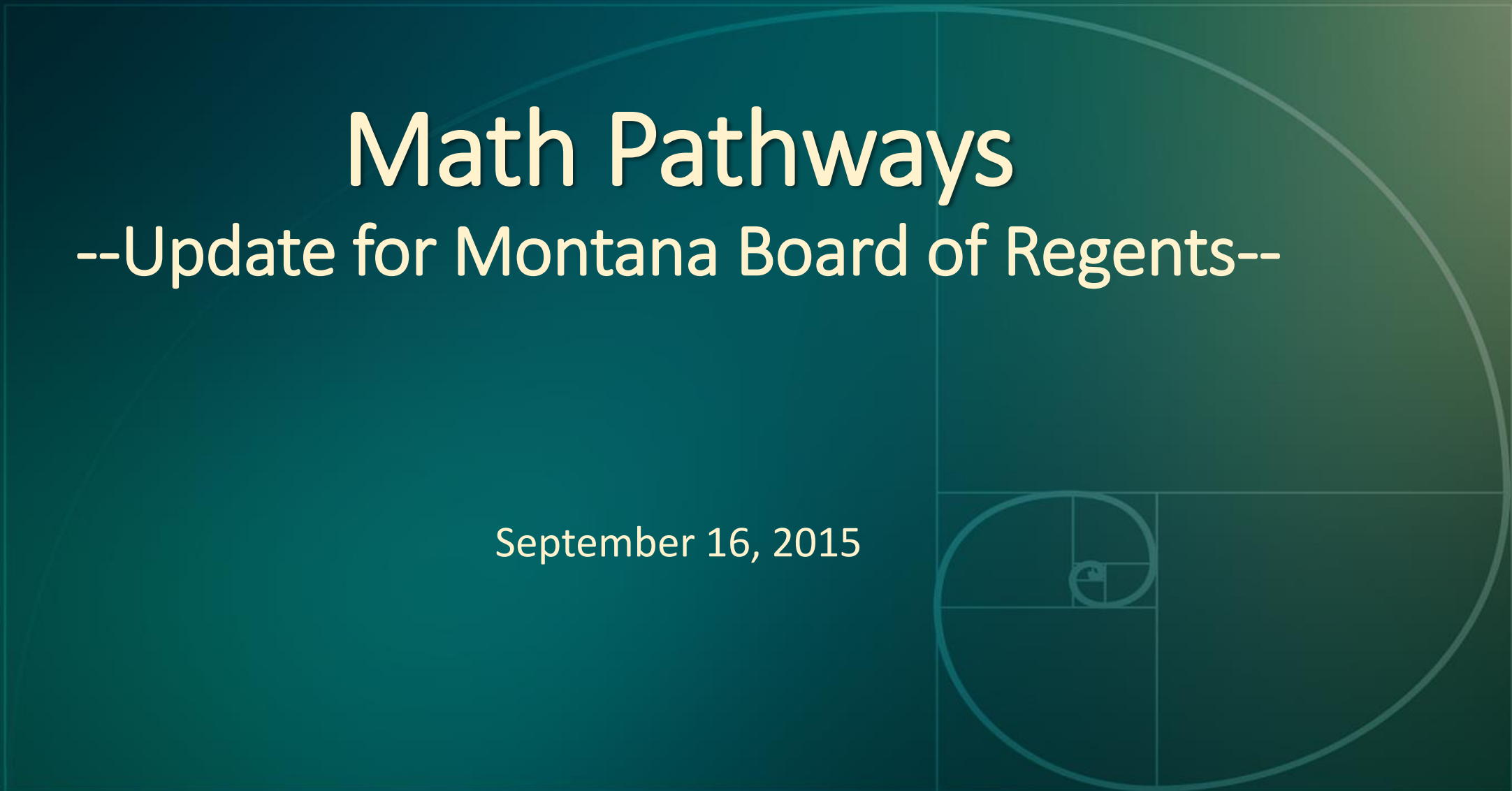


Math Pathways

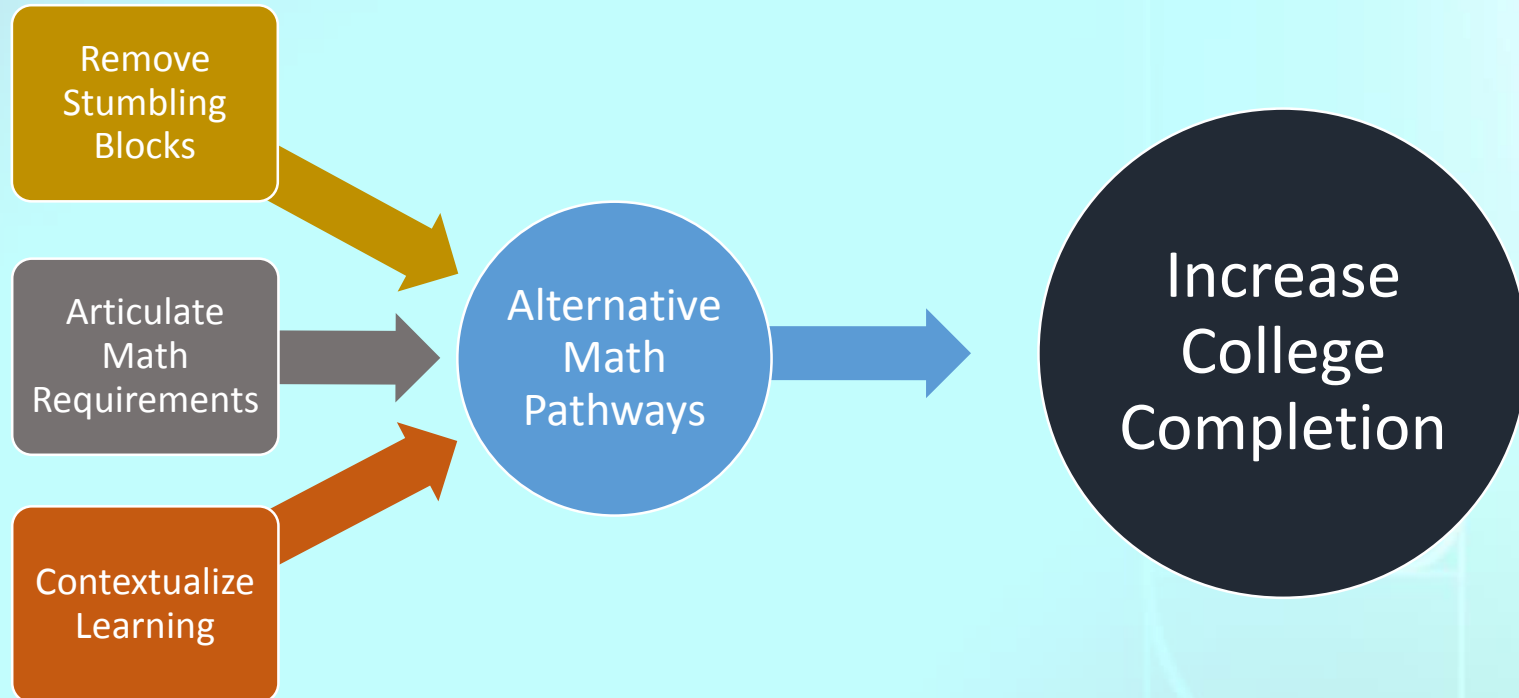
--Update for Montana Board of Regents--

September 16, 2015

$$\frac{a+b}{a} = \frac{a}{b} = \varphi \approx 1,61803$$



Overarching Goal of Math Pathways



Math Pathways Taskforce Recommendations

September 2015

Co-Chair John Lund, Montana State University-Bozeman

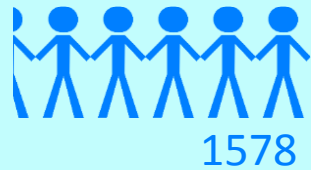
1. Provide clear options for non-STEM students in developmental math courses
2. Develop alternative non-STEM pathways for college-level, quantitative reasoning core math courses
3. Strengthen advising processes for math
4. Re-assess math requirements for non-STEM Majors

$$\frac{a+b}{a} = \frac{a}{b} = \phi \approx 1,61803$$

1. Provide clear options for non-STEM students in developmental math courses

Progression of Students Placed into
M095, M096, M097, or M098
Fall 2009 – Spring 2015

STEM



8.6% Success



Placed into Dev Math

Continued to College Math

Earned a Degree

Non-STEM

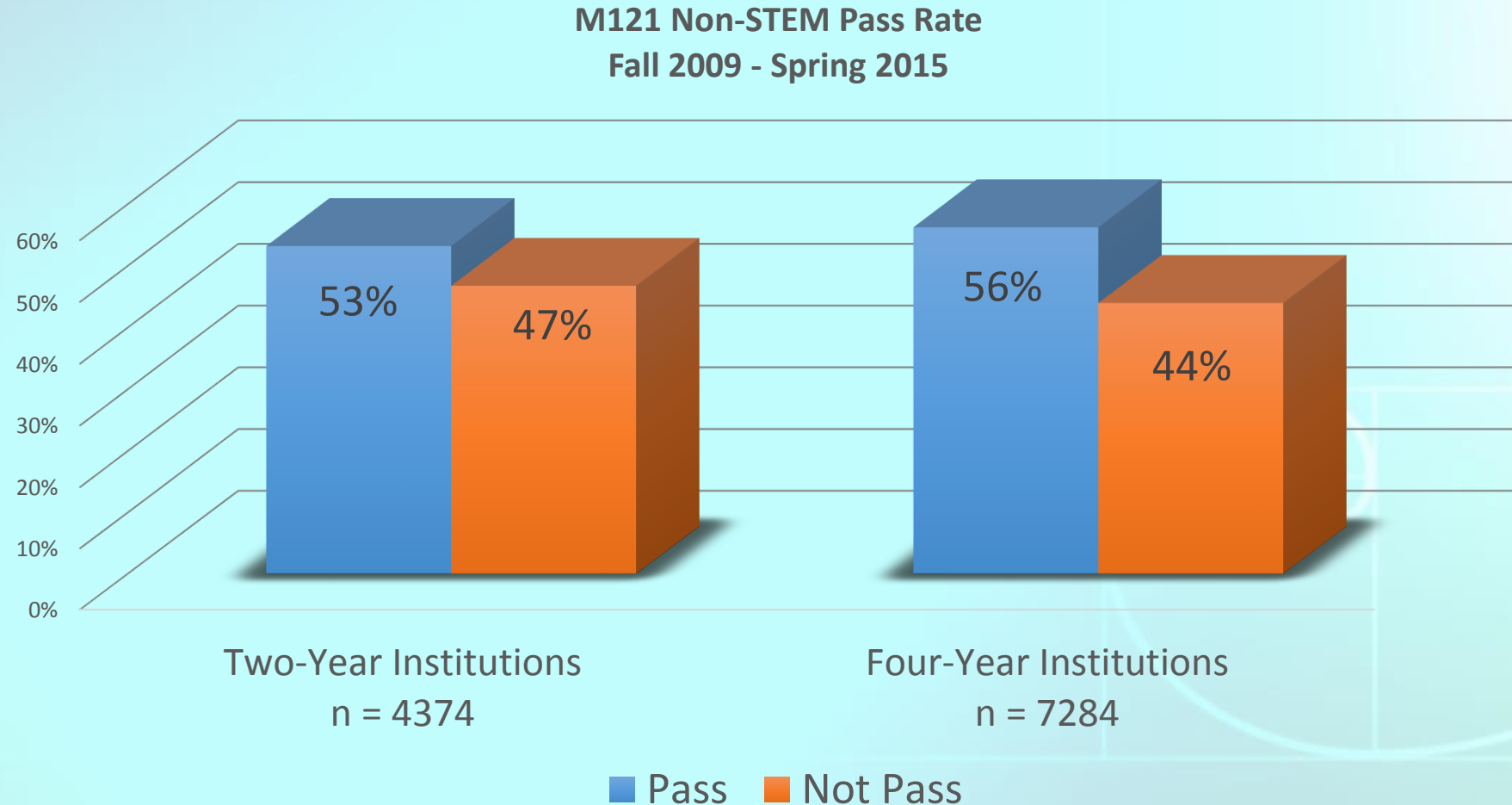


9.7% Success



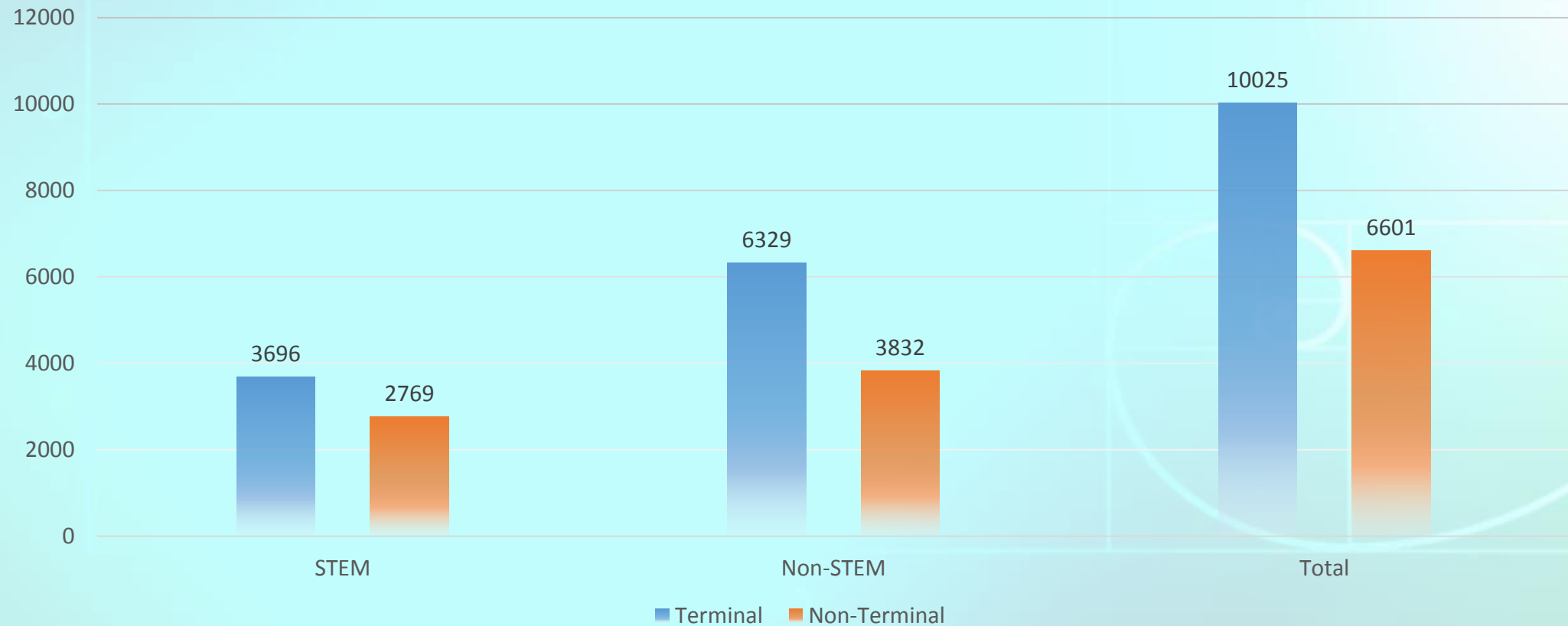
 = 300 Students

2. *Develop alternative non-STEM pathways for college-level, quantitative reasoning core math courses*



3. Strengthen Advising Processes for Math

M121 AS A TERMINAL COURSE FALL 2009 – SPRING 2015



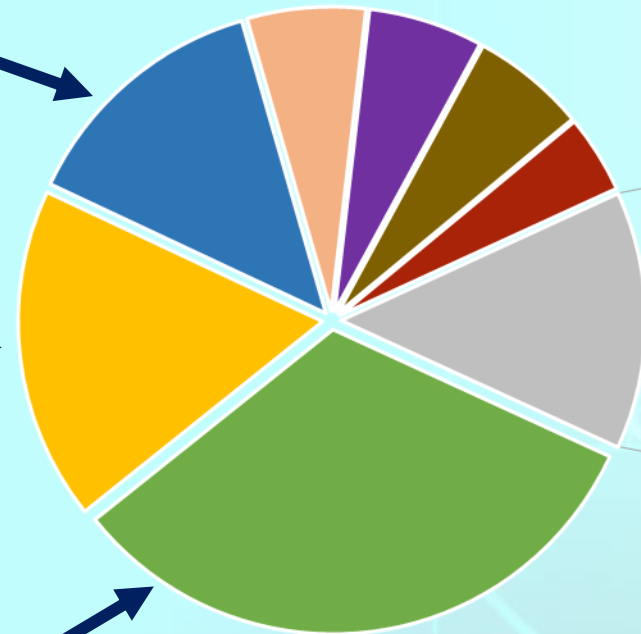
4. Re-assess Math Requirements for Non-STEM Majors

Math 121 enrollment by major clusters:
Fall 2009 – Spring 2015
n = 16,626

STEM majors

Health Science

General studies/undeclared majors



Math Pathways Taskforce

John Lund, Montana State University – Co-Chair

Rich Rehberger, Gallatin College – Co-Chair

Alicia Heckel, University of Montana – Facilitator

John Cech, Montana University System – Ex-officio Liaison

Neil Moisey, Montana University System – Ex-officio Liaison

Bob Mokwa, Montana State University

Chairsty Stewart, Montana State University–Billings

Rich Pierce, Montana State University–Billings

Charles Pollington, Montana State University–Northern

Joyce Walborn, Helena College

Matt Roscoe, University of Montana

Sharon O’Hare, University of Montana – Liaison to Developmental Education Council

Former Member: Jim Herstein, University of Montana – Past Chair