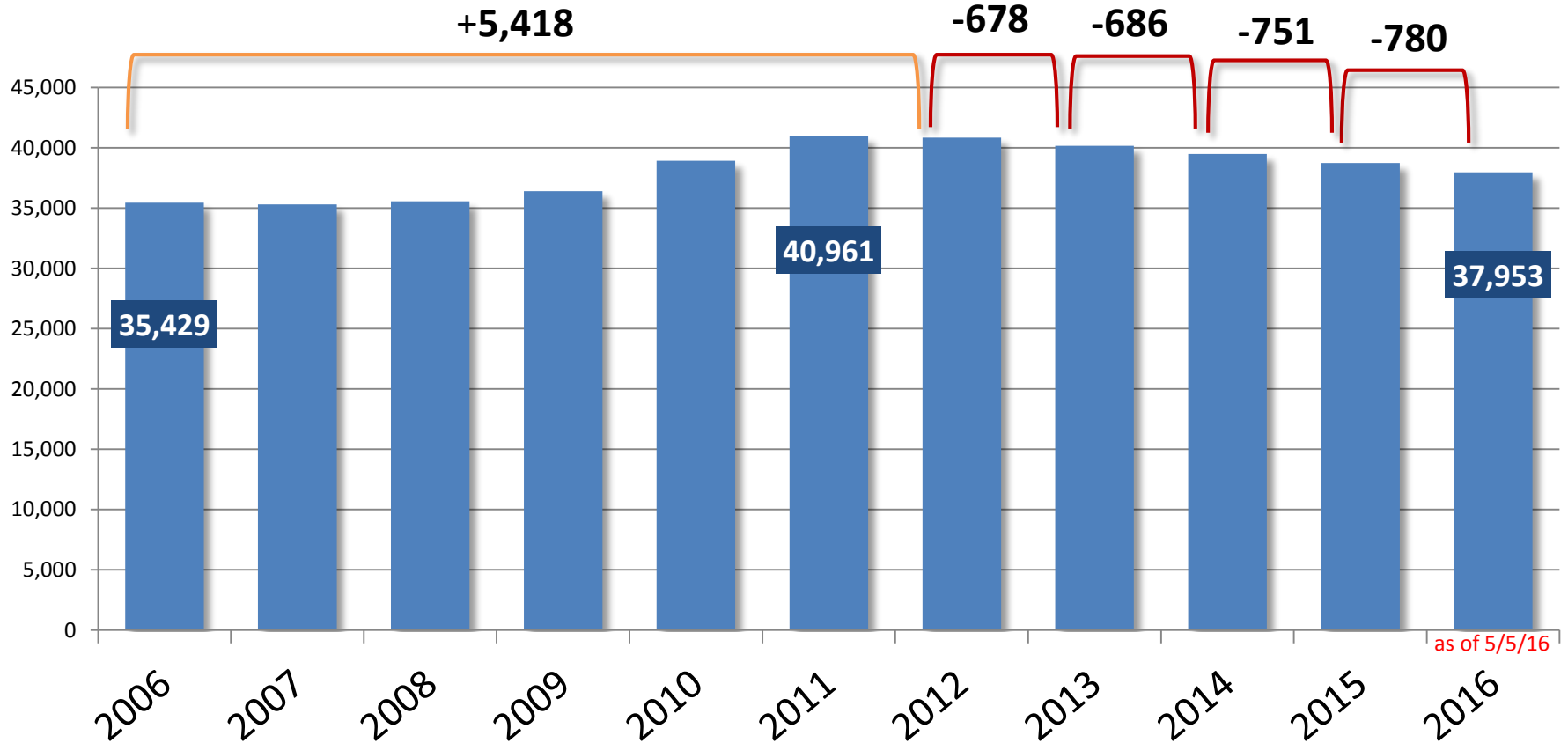




Fiscal Year Enrollment Report – FY 2016

- ❖ Enrollment in the MUS declined by 780 student FTE from FY 2015 to FY 2016
- ❖ Enrollment has grown by approximately 2,500 FTE (7%) over the past ten years

Average Annual FTE or FY FTE = ((Summer Term + Fall Term) + Spring Term)/2





Student FTE by Residency & Level

1-Year Comparison

- ❖ -2.0% decline from last fiscal year, equaling a drop of 780 FTE
- ❖ Resident Undergraduates witnessed the largest decline (-750)

1-Year Comparison

includes CC's

	2015	2016	DIFF	%CHG
Resident Undergraduate	26,361	25,612	-750	-2.8%
Resident Graduate	2,393	2,341	-53	-2.2%
Resident sub-total	28,755	27,952	-802	-2.8%
Non-resident Undergraduate	6,627	6,364	-263	-4.0%
WUE	2,424	2,640	216	8.9%
Non-resident Graduate	927	996	69	7.5%
Non-resident sub-total	9,978	10,000	23	0.2%
Total	38,732	37,953	-780	-2.0%

Figures may not total due to rounding



Student FTE by Residency & Level

10-Year Comparison

- ❖ 7% growth over last ten years, equaling an increase of 2,524 FTE
- ❖ Resident FTE declined by -686, while Non-resident FTE increased +3,402

10-Year Comparison

includes CC's

	2006	2016	DIFF	%CHG
Resident Undergraduate	26,482	25,612	-870	-3.3%
Resident Graduate	2,156	2,341	184	8.5%
Resident sub-total	28,639	27,952	-686	-2.4%
Non-resident Undergraduate	4,270	6,364	2,094	49.0%
WUE	1,648	2,640	993	60.3%
Non-resident Graduate	873	996	124	14.2%
Non-resident sub-total	6,790	10,000	3,210	47.3%
Total	35,429	37,953	2,524	7.1%

Figures may not total due to rounding

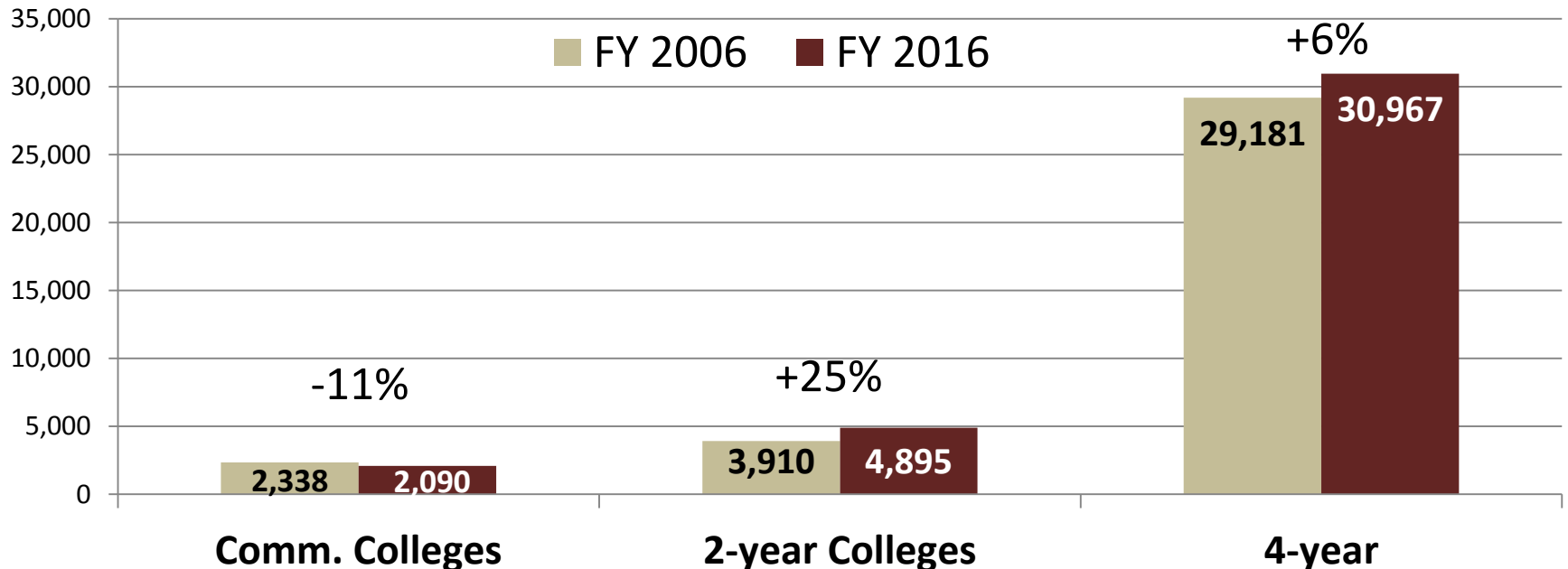


Student FTE by Campus Type

10-Year Comparison

- ❖ 2-year Colleges experienced the largest percent increase over the past ten years (+25%)
- ❖ 4-year campuses grew the most in terms of absolute number of students = +1,786 FTE.

Ten Year FTE Growth by Sector

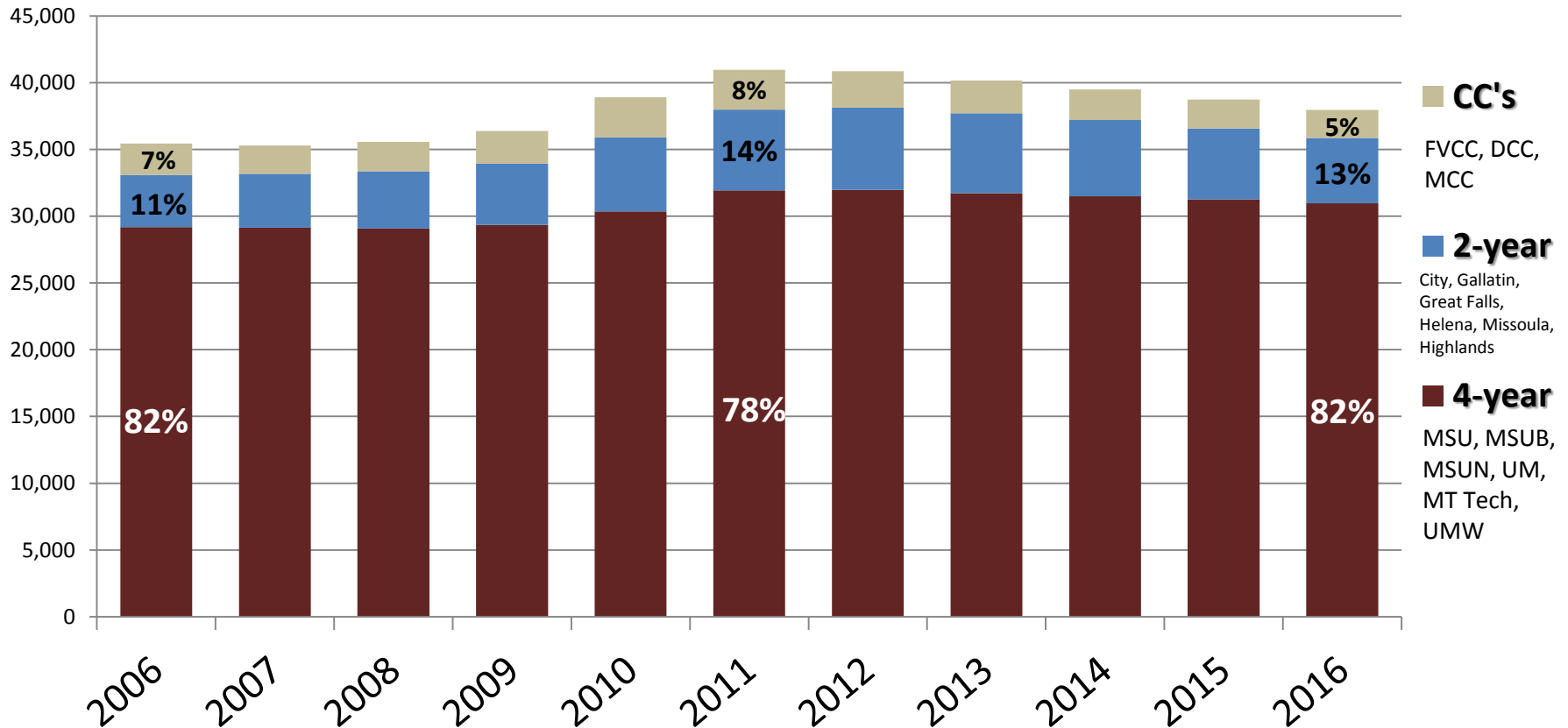




Student FTE by Campus Type 10-Year History

Fiscal Year Student FTE - 10 Year History by Sector

Average Annual FTE or FY FTE = ((Summer + Fall) + Spring)/2





Total FTE by Campus Type

- ❖ **1-year:** FTE declined by 780 FTE; majority of decline within the 2-year College sector
- ❖ **10-year:** 2-year Colleges largest percent increase, 4-year Colleges largest numerical growth

1-Year Comparison

	2015	2016	DIFF	%CHG
Comm. Colleges	2,154	2,090	-64	-3.0%
2-year Colleges	5,310	4,895	-415	-7.8%
4-year Colleges	31,268	30,967	-301	-1.0%
Total	38,732	37,953	-780	-2.0%

10-Year Comparison

	2006	2016	DIFF	%CHG
Comm. Colleges	2,338	2,090	-248	-10.6%
2-year Colleges	3,910	4,895	985	25.2%
4-year Colleges	29,181	30,967	1,786	6.1%
Total	35,429	37,953	2,524	7.1%

Figures may not total due to rounding



Resident FTE by Campus Type

- ❖ **1-year:** resident FTE dropped by 800 FTE, declines occurring in all sectors
- ❖ **10-year:** 2-year Colleges – only sector with growth in resident student FTE

1-Year Comparison

	2015	2016	DIFF	%CHG
Comm. Colleges	1,943	1,880	-63	-3.2%
2-year Colleges	4,923	4,543	-380	-7.7%
4-year Colleges	21,888	21,529	-359	-1.6%
Total	28,755	27,952	-802	-2.8%

10-Year Comparison

	2006	2016	DIFF	%CHG
Comm. Colleges	2,217	1,880	-337	-15.2%
2-year Colleges	3,756	4,543	786	20.9%
4-year Colleges	22,665	21,529	-1,136	-5.0%
Total	28,639	27,952	-686	-2.4%

Figures may not total due to rounding



Non-resident FTE by Campus Type

- ❖ **1-year:** non-resident enrollment slowed, growing by 23 student FTE
- ❖ **10-year:** 47% increase in non-resident FTE; vast majority enrolling at 4-year campuses

1-Year Comparison

Including WUE

	2015	2016	DIFF	%CHG
Comm. Colleges	211	210	-1	-0.5%
2-year Colleges	387	352	-34	-8.9%
4-year Colleges	9,380	9,438	58	0.6%
Total	9,978	10,000	23	0.2%

10-Year Comparison

Including WUE

	2006	2016	DIFF	%CHG
Comm. Colleges	121	210	89	73.6%
2-year Colleges	153	352	199	130.0%
4-year Colleges	6,516	9,438	2,922	44.8%
Total	6,790	10,000	3,210	47.3%

Figures may not total due to rounding



One Year FTE Growth by Campus – FY15 to FY16

Ranked by # FTE Growth

CAMPUS	#
MSU Bozeman	381
Miles Community College	22
Montana Tech	17
Gallatin College MSU	6
Highlands College of MT Tech	2
UM Western	-4
MSU Northern	-9
Dawson Community College	-32
City College at MSUB	-39
Flathead Valley Community College	-54
Great Falls College MSU	-62
Helena College UM	-83
Missoula College UM	-238
MSU Billings	-244
UM Missoula	-441
MUS Total	-780

Ranked by % FTE Growth

CAMPUS	%
Miles Community College	6%
MSU Bozeman	3%
Gallatin College MSU	1%
Montana Tech	1%
Highlands College of MT Tech	0%
UM Western	0%
MSU Northern	-1%
Flathead Valley Community College	-4%
UM Missoula	-4%
Great Falls College MSU	-5%
City College at MSUB	-5%
MSU Billings	-8%
Helena College UM	-9%
Dawson Community College	-12%
Missoula College UM	-16%
MUS Total	-2%



Ten Year FTE Growth by Campus – FY06 to FY16

Ranked by # FTE Growth

CAMPUS	#
MSU Bozeman	2847
Montana Tech	576
Gallatin College MSU	343
UM Western	262
Missoula College UM	224
Great Falls College MSU	138
Helena College UM	124
Flathead Valley Community College	103
City College at MSUB	97
Highlands College of MT Tech	59
Miles Community College	-87
MSU Northern	-159
Dawson Community College	-264
MSU Billings	-677
UM Missoula	-1062
MUS Total	2,524

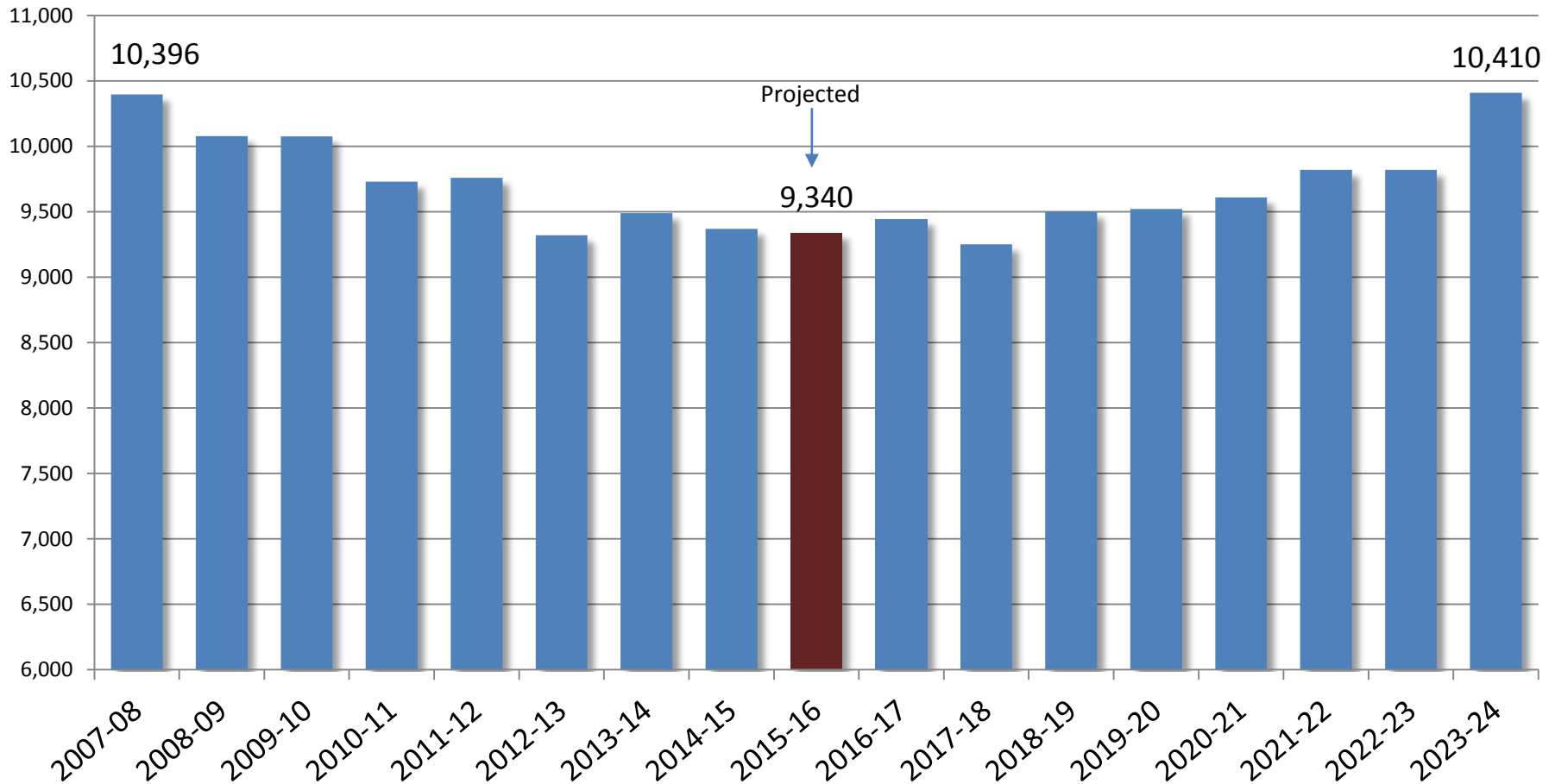
Ranked by % FTE Growth

CAMPUS	%
Gallatin College MSU	329%
Montana Tech	34%
MSU Bozeman	27%
UM Western	24%
Missoula College UM	22%
Highlands College of MT Tech	19%
Helena College UM	17%
City College at MSUB	15%
Great Falls College MSU	13%
Flathead Valley Community College	8%
UM Missoula	-10%
MSU Northern	-13%
Miles Community College	-19%
MSU Billings	-19%
Dawson Community College	-53%
MUS Total	7%



Montana Public High School Graduates

source: NCES, Projections of Education Statistics to 2024



Montana, as well as the entire nation, will experience a modest decline in the production of high school graduates due to a reduction in births in the wake of the Baby Boom Echo (WICHE). Beginning in 1991 the number of live births in the US declined slightly and remained lower for about 10 to 12 years.



New Resident Students

1st-time Resident Freshmen Entering the MUS, Fall Semesters

No CC's

Difference

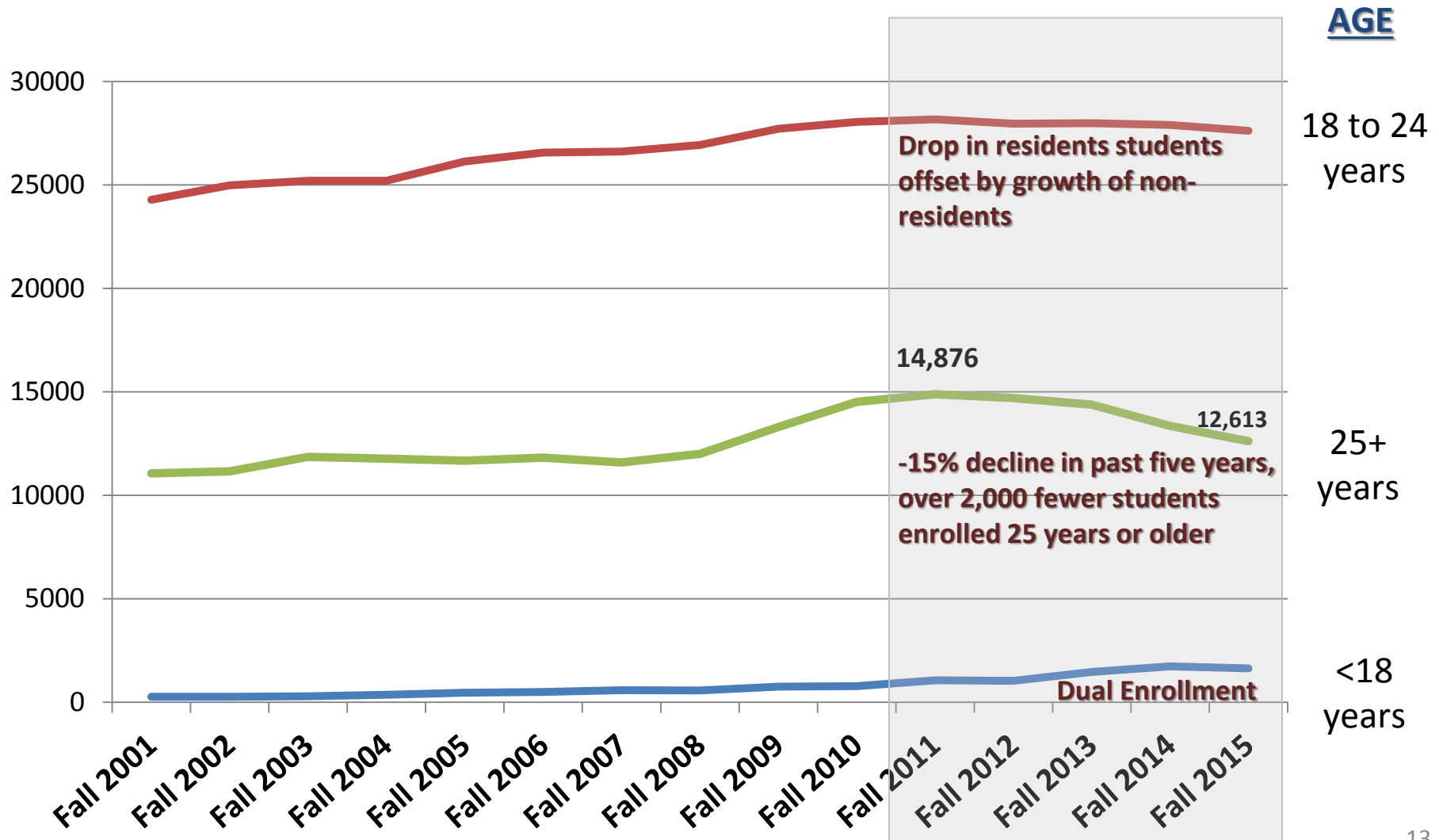
First-time Freshmen Cohorts	Fall 2010	Fall 2011	Fall 2012	Fall 2013	Fall 2014	Fall 2015	2010 to 2015	
							#	%
Resident Students (all resident students, no CC's)	5,633	5,290	5,001	4,882	4,788	4,483	-1,150	-20%
Resident Students (entering within 3 years of HS graduation)	4,805	4,560	4,394	4,285	4,326	4,074	-731	-15%
HS Graduating Class, MT Public Schools (source: GEMS)	10,037	9,704	9,723	9,345	9,474	9,346	-691	-7%
Recent MT Public HS Grads Enrolled in MUS (attending immediately following graduation)	3,538	3,447	3,418	3,368	3,540	3,409	-129	-4%
MUS Capture Rate (% of recent HS grad attending MUS)	35%	36%	35%	36%	37%	36%		1%

- ❖ Steady decline of new resident students entering the MUS since Fall 2010
- ❖ MUS Capture Rate of recent MT Public High School graduates remains stable



Headcount by Age

Unduplicated Headcount, Fall Census, (no CC's)





Summary Points

- ❖ **1-year Comparison:** Student FTE is down 2.0% (-780 FTE) in comparison to last fiscal year.
 - Resident student FTE is down 2.8% (-802 FTE)
 - Non-resident FTE is up slightly at +0.2% (+23 FTE)

- ❖ **10-year Comparison:** Student FTE has grown 7% (+2,500 FTE) over the past 10 years.
 - 4-year Colleges = +1,786 FTE; 2-year Colleges = +985 FTE; CC's = -248 FTE
 - 2-year Colleges – only sector with growth in resident student FTE

- ❖ **Campus Growth:**
 - 1-year comparison: 5 out of 15 campuses increased enrollment
 - 10-year comparison: all 2-year colleges, half of the 4-year colleges, and one CC experienced growth over the past ten years.



Summary Points (cont.)

❖ **New Resident Students**

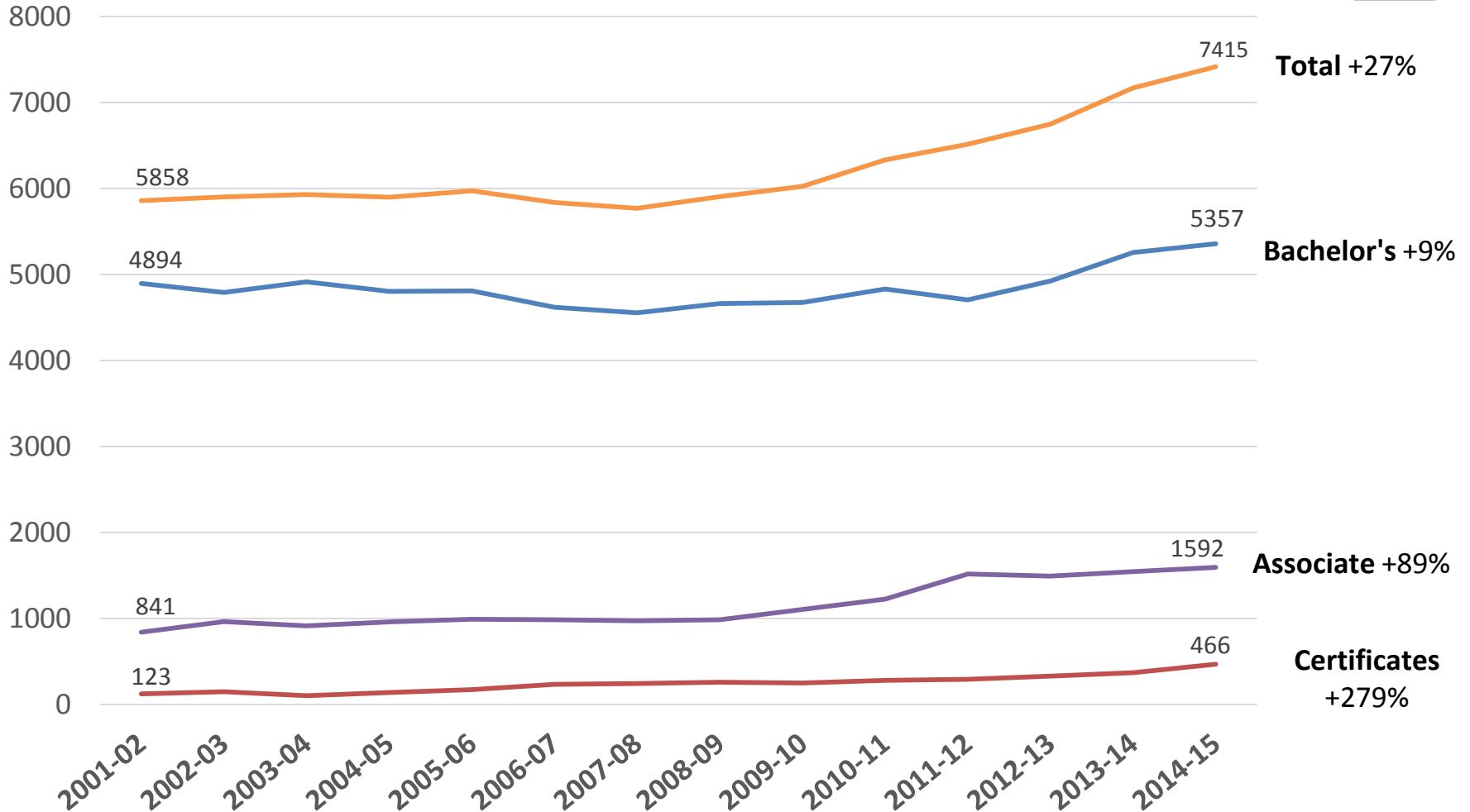
- Natural decline in the number of MT high school graduates is a contributor to decline in MUS enrollment
 - # of MT public high school graduates down approx. 1,000 grads compared to 2008 (compounding problem with fewer students in pipeline)
 - Capture rates of recent high schools have not declined
- **Economic recovery also influences total enrollment**
 - -15% decline in the number of students 25+ years old over the past 5 years



SUPPLEMENT

Undergraduate Degrees & Certificates Awarded, 2002 - 2015

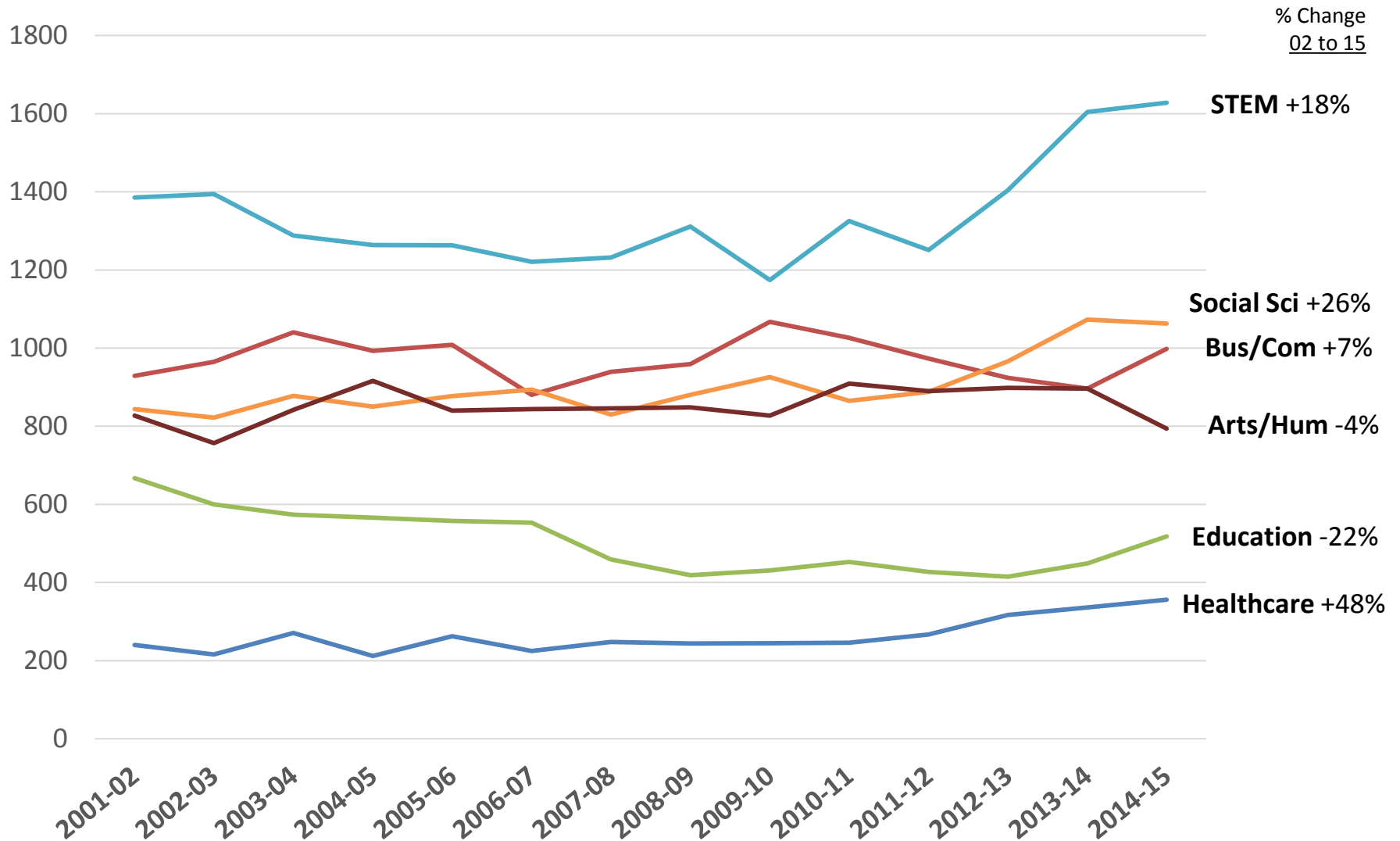
% Change
02 to 15





MONTANA UNIVERSITY SYSTEM

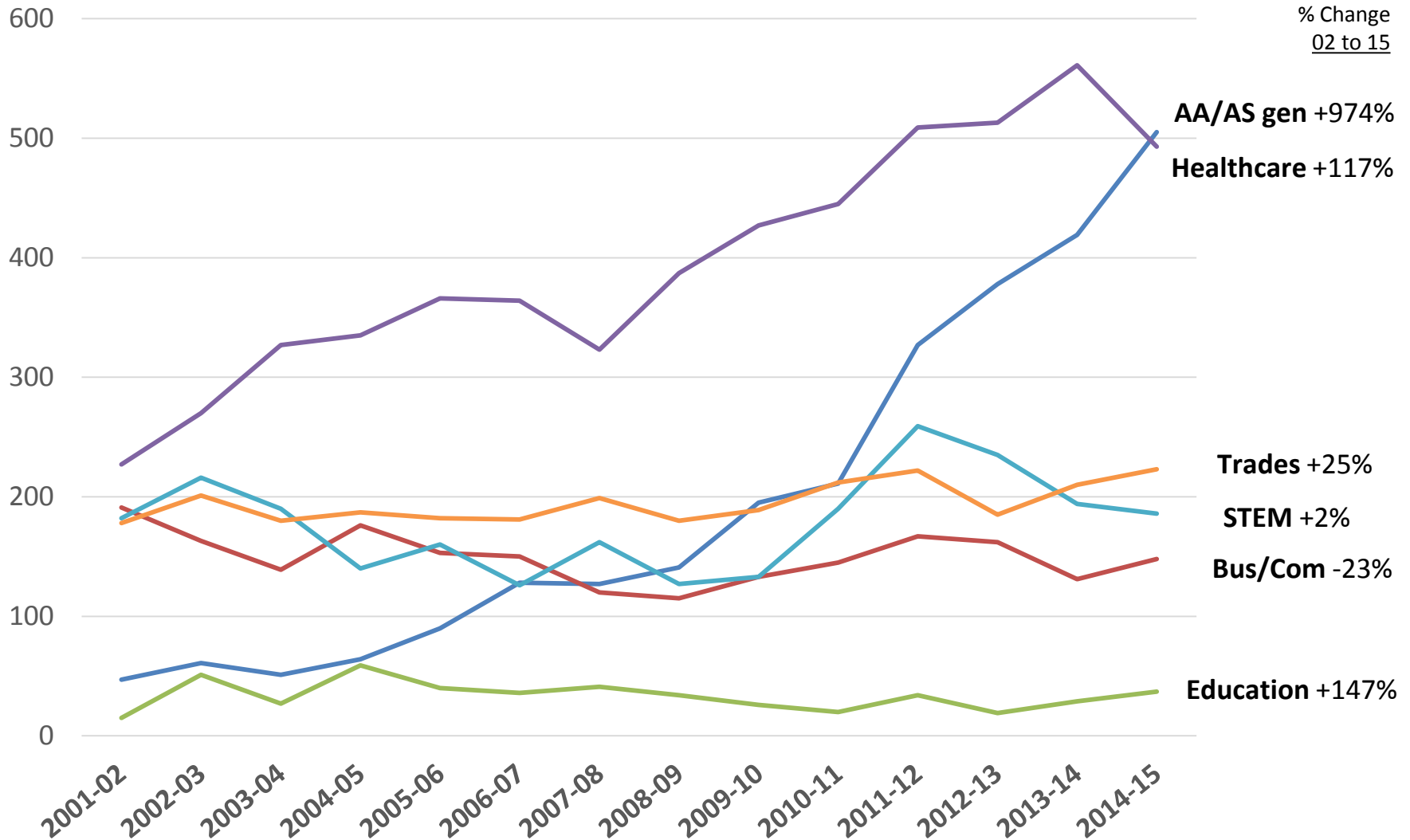
Bachelor's Degrees Awarded by Discipline, 2002 - 2015





MONTANA UNIVERSITY SYSTEM

Associate Degrees Awarded by Discipline, 2002 - 2015





Montana University System Degree Production

Certificates Awarded by Discipline, 2002 - 2015

includes CAS 1-year & CTS < 1-year

