

EXHIBIT A

PERPETUAL RIGHT-OF-WAY

WITHIN

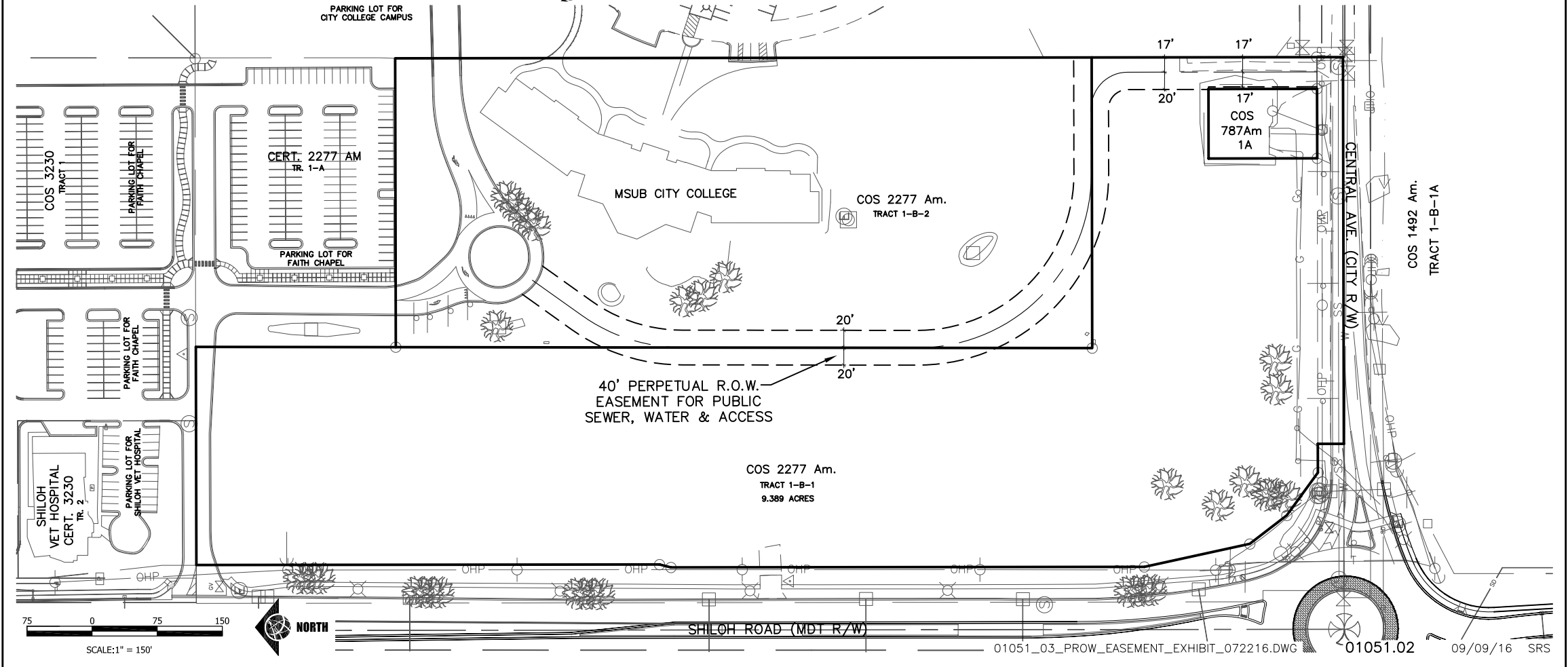
C.O.S. 2277 AM., TRACT 1-B-1 & 1-B-2

PREPARED FOR : STOCK LAND PROPERTIES

PREPARED BY : **SANDERSON STEWART**

SEPTEMBER, 2016

BILLINGS, MONTANA



P:\01051_03_COS_2277_Tr_1B1_Topo\CADD\C3D\PRODUCT\TOP\DWG\01051_03_PROW_EASEMENT_EXHIBIT_072216.dwg, 85x14 LANDSCAPE-RECORDED, 9/9/2016 10:03:29 A