

Advancing Student Success in Partnership with Complete College America

“Game Changers”



Full-Time is 15



Pathways to Success



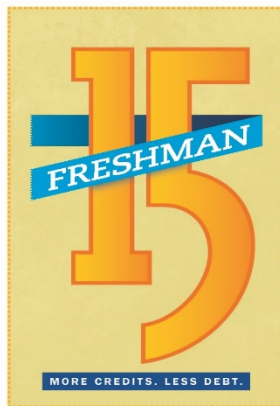
Math Pathways





Full-Time is 15

SAVE \$ ON TUITION



Enroll in
15+
credits

Pay for
12
credits

Graduate
on time.

- Students fill their plates
- Accelerate degree completion
- Save on tuition
- Reduce exposure to debt

Don't take on extra debt.

Start as a freshman to maximize your savings and get a head start on your career. But it's not just for freshmen. **Any** MSU undergraduate can receive the Freshman 15 advantage.



Game Changing:

Three-quarters (vs. half) of first-year students are now taking 15 or more credits



Pathways to Success

Table 1: The centroid student computed for the *Mechanical Engineering* major at Montana State University.

Fall-Y1	Spring-Y1	Fall-Y2	Spring-Y2	Fall-Y3	Spring-Y3	Fall-Y4	Spring-Y4
ANTY-101	CHMY-141	EGEN-201	EELE-250	EGEN-335	EMEC-321	EMEC-405	EGEN-488
CLS-101	EGEN-117	EMAT-251	EGEN-202	EGEN-350	EMEC-326	EMEC-425	EMAT-350
EMEC-100	EGEN-118	EMAT-252	EGEN-205	EMEC-303	EMEC-342	EMEC-445	EMEC-402
M-171	M-172	M-273	ETME-215	EMEC-320	EMEC-360	EMEC-489R	EMEC-403
PHSX-103	PHSX-220	ME-102	ETME-217	EMEC-341	EMEC-443	MUSI-203	EMEC-499
	WRIT-101	PHSX-222	M-274				FCS-101

Engineering & Physical Science “Meta-Major”

First-Year Matryoshka

- **CORE:** Seminar, WRIT, Mathematics, Natural Science, Humanities
- **STEM Foundations:** CHMY, PHSX-2
- **Engineering Foundations:** EGEN-2
- **Introduction to Discipline:** EMEC





Pathways to Success

“Technology Enhanced Advising”

Degree Works for four-year templates and plans – starting at Orientation.

Cat Course Scheduler

“Schedulocity” for term schedules

Early Alert *with*

Champ Change Engagement





Math Pathways



- *Continuous Improvements in Placement*
- *Co-requisite Pathways – Innovation over Remediation*
- *Intake Pathways – CoEX, ...*
- *Help Centers and Tutoring*
- *Student Success Coordinators*
- *Pedagogical Redesign in Flipped Classroom Instruction*

Pass rates rose from 60% to 80% in M121, STAT216



Conclusions

- **15-credit registration increased significantly**
- **Success in mathematics dramatically improved**
- **4-year and 5-year graduation rates jumped nearly 10 percentage points over the past five years**
- **Students save time & money, and graduate on schedule**
- **Partnership with CCA accelerates implementation and advances the foundational scholarship**

References

APLU Project Degree Completion 2016 C. Fastnow and D. Singel

“Finding Pathways to Student Success from Data”

B. Mumey, S. Yaw, C. Fastnow, D. Singel

“Partnerships and collaborations: The foundation for technology enhanced active learning (TEAL) classrooms”, Lockhart, M., and Jackson, L. (2015).

*Innovation In Educational Technology Award
Northwest Academic Computing Consortium*



MONTANA
STATE UNIVERSITY



Aligning UM Student Success Efforts with Complete College America's Game Changers



Structured
Schedules



Guided
Pathways to
Success



Co-Requisite
Support



Math
Pathways



Core Course Registration

- 76% of incoming first-year students are pre-registered for structured schedules
- Math pathways are taken into account with all core courses
- Each structured schedule consists of at least 15 credits, including Freshman Seminar



Exploratory Studies Program

- Seven exploratory tracks based on meta-majors provide undecided students with a more focused approach to the major discovery process
- Major maps provide three-semester pathways of guided coursework and major discovery checkpoints



Co-Requisite Support

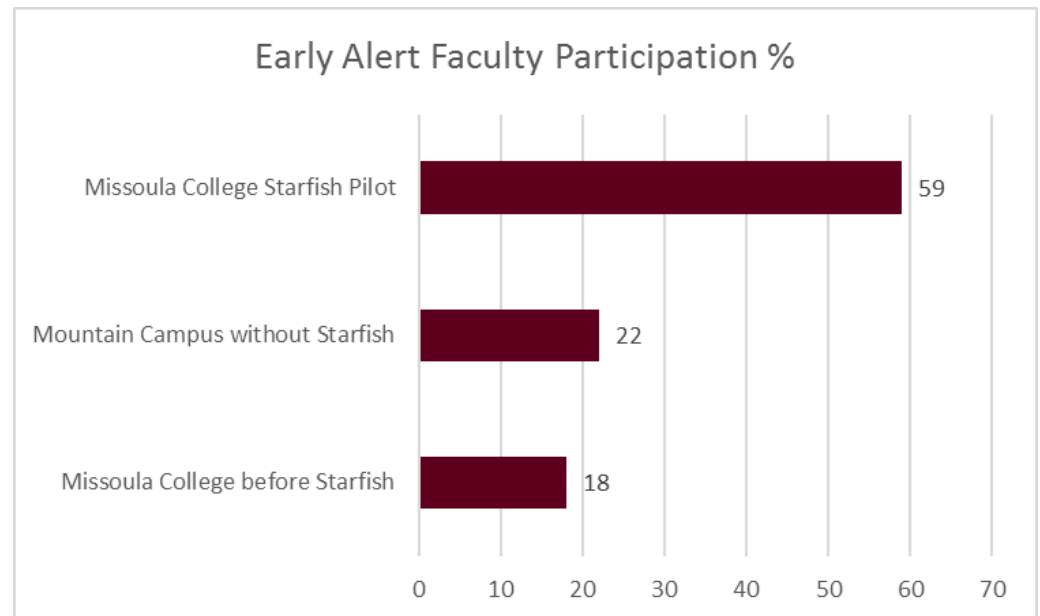
- Current pilots in gateway math and writing courses
- Small class sizes and embedded academic support
- Next steps:
 1. Scale co-requisite offerings
 2. Integrate co-requisite sections into major core courses and exploratory tracks



Starfish Student Success Platform

Early Alert: Intrusive advising interventions ensure students have the support necessary to stay on-track.

- Over 12,000 tracking items have been raised so far during fall 2017 semester, including over 8,000 “kudos”





Math Pathways and EdReady

- Established math pathways for quantitative literacy, statistics, and STEM-track majors.
- Over 80% of students who complete EdReady improve their math placement level
- Over 400 students have utilized EdReady so far during AY 17/18



4 to the **GRADUATION DOOR.**

UNIVERSITY OF MONTANA