

College Access Update

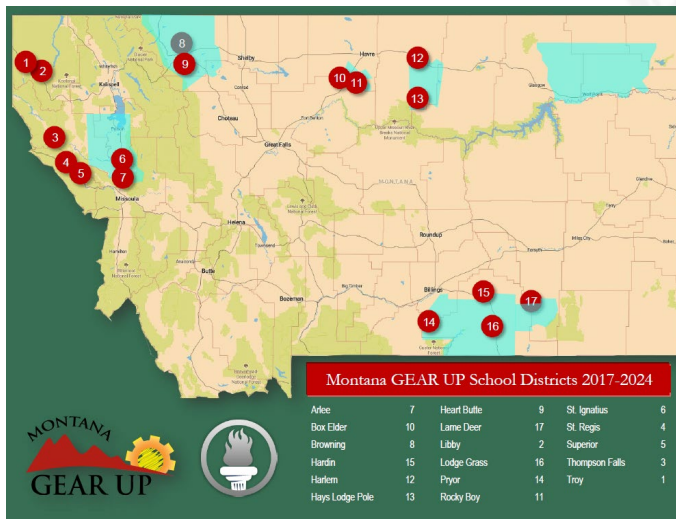
Travis Anderson, Director GEAR UP

Jeannie Origbo, Director METS

September 2021

Montana GEAR UP

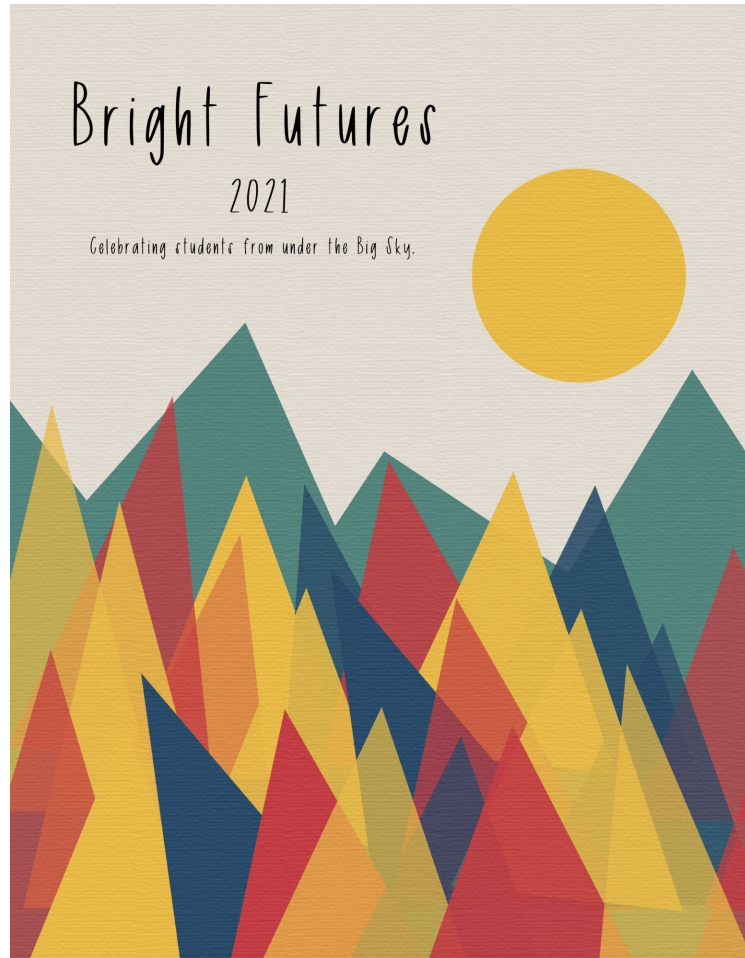
- 7 Year \$24.5 million award
 - \$3.5 million annually through FY24
- Focus on college access, awareness, and readiness for underserved students in 19 MT schools in 17 districts
- First Year Service
 - Provide supports for eligible GEAR UP students in their first year on campus
 - Montana State University
 - University of Montana
 - Montana State University – Billings
 - Flathead Valley Community College
 - Salish Kootenai College
 - Gallatin College
 - Missoula College
 - City College



Montana GEAR UP

- Provides fiscal support for statewide programs:
 - 1,2,Free
 - ACT – Juniors
 - PreACT - Sophomores
- Promotes interaction with campus through visits and summer programming
- SEL professional development for staff
- Provide various supports to facilitate learning opportunities for students
 - Devices (Chromebooks)
 - Accessibility (Access Points)
 - Learning Supports (iTutor)
 - Student Support (SSA)
- Conducting GEAR UP West 2021
 - October 17-19 @ Billings

Bright Futures



- Each year, the Montana Educational Talent Search program and Montana GEAR UP support youth in being college ready whether they are the first in their family to attend college, need financial assistance, or just require extra support. We want to celebrate the graduates of both programs as they pursue various paths beyond high school, as well as look back at their success, involvement, and acknowledge the barriers they've overcome.
- The senior stories represent only a small portion of the hundreds of students that benefit from these programs. On behalf of the Montana University System's College Access Team, we congratulate the class of 2021 on their momentous accomplishments.

Montana Educational Talent Search 2021-2026

- Submitted February 2021 for the Talent Search competition with the U.S. Department of Education
- Received notification August 2021 of awarding of continued grant funding for 2021-2026 grant cycle
- \$713,964 annual budget to serve 1287 a year in 9 communities
- Competitive priorities focus on STEM and preparing students to be informed, thoughtful, and productive individuals and citizens



Campus and Career Exploration August 2021

METS Supporting Career Exploration

- Career exploration is a foundational piece of the services provided by the METS program.
- *Careers in Sight* focuses on social media live interviews with Montana workers each month themed around the career cluster spotlight of the month.
- Careers in Action Videos
 - Winter 2020 worked with DFMAN Enterprise using student survey data to create 16 videos from the career clusters.



Jake Arrowtop, Heart Butte English Teacher

METS Supporting Return to Learn Efforts

- Dedicated to supporting participants in our 9 target communities making the decision to either go back to high school, enter post-secondary the first time, or returning to post-secondary education
- Up to 27 years in age
- Connections to already established campus programs, such as *Become an Alum* programs at UM, MSU-Billings, DCC, and MCC, and *Return to Learn* at MSU.
- Newly launched [website](#) of resources
- *Leading the Way* narrative

