

# CAMPUS STORAGE/WAREHOUSE BUILDING

## A/E # 2022-04-03-01 Item 211-1601-R-0324\_A2

Item #211-1601-R0324\_A2



604 E. Cornell St., Dillon Mt.

### PROJECT TEAM

#### OWNER



STATE OF MONTANA  
DEPT OF ADMIN  
1520 EAST 6TH AVE.  
HELENA, MT. 59601  
406.431.8447  
CONTACT: Mark Hines

#### UMW - REPRESENTATIVE



710 S Atlantic St.  
Dillon, MT 59725  
CONTACT: MICHAEL (EMBEE) BROWN,  
DIRECTOR OF FACILITIES  
406.683.7145

#### ARCHITECTURAL



DOWLING ARCHITECTS  
734 N. LAST CHANCE GULCH  
HELENA, MT 59601  
406.457.5470  
CONTACT: LINDSEY KAMERZEL

#### CIVIL



DELUXE ENGINEERING & CONSTRUCTION  
2505 FIVE MILE RD.  
BUTTE, MT. 59701  
406.310.0618  
CONTACT: SARAH JONES, PE

#### STRUCTURAL



MORRISON-MAREILLE  
406.457.5470  
CONTACT: ERIC

#### MECHANICAL

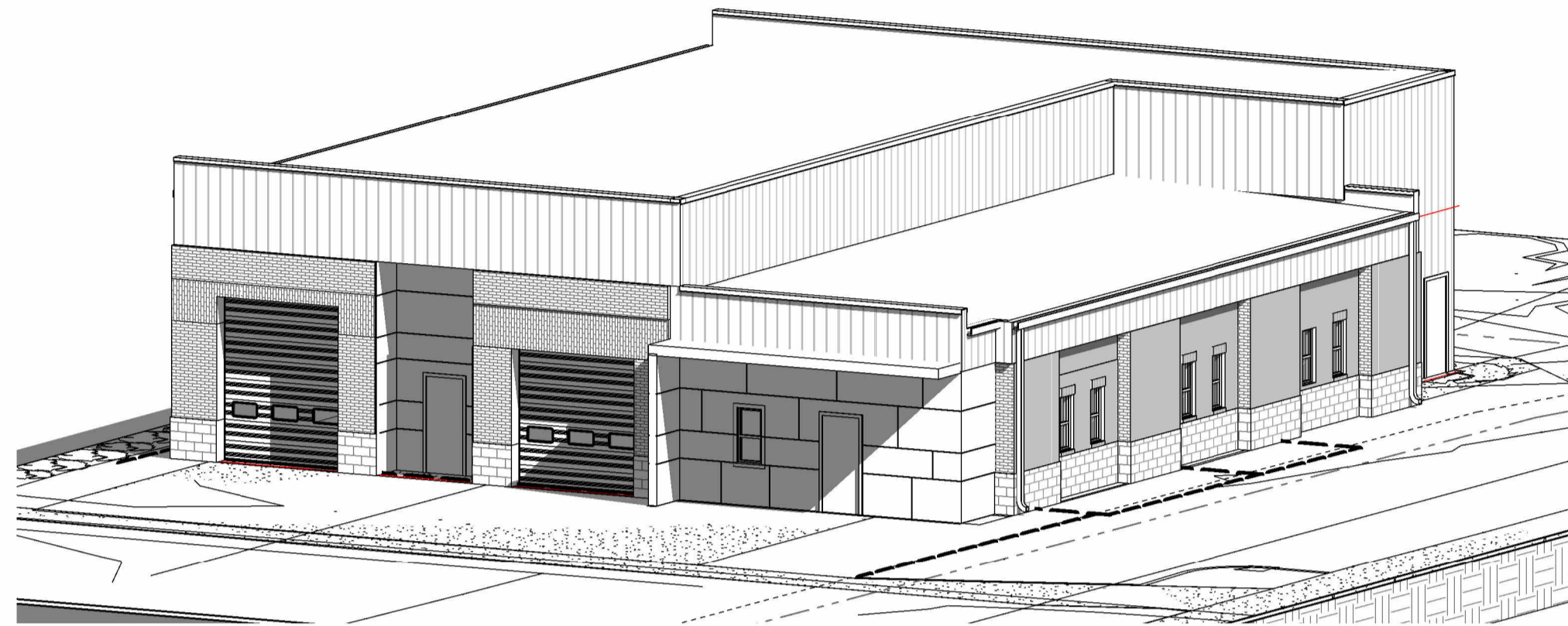


MORRISON-MAREILLE  
406.457.5470  
CONTACT: ERIC

#### ELECTRICAL



MORRISON-MAREILLE  
406.457.5470  
CONTACT: ERIC



COVER PERSPECTIVE

#### PROJECT AREA

COLD STORAGE:.....3407 SF  
HEATED STORAGE:.....1456 SF  
MEZANINE:.....845 SF  
TOTAL GROSS AREA:.....5709 SF

#### PROJECT DESCRIPTION / SPECIFIC NOTES

**DESCRIPTION**  
THIS STRUCTURE WILL BE USED BY UMW FOR STORAGE FOR THE ENTIRE CAMPUS. THE BUILDING WILL BE DIVIDED INTO COLD STORAGE AND HEATED STORAGE. THIS BUILDING WILL NOT BE OCCUPIED BY STAFF, SO PLUMBING FIXTURES ARE NOT NEEDED.

**SPECIFIC NOTES**  
1. G.C. TO VISIT SITE PRIOR TO ALL WORK, VERIFYING BOUNDARIES AND LOCATING UTILITIES AND INFRASTRUCTURE TO BE PROTECTED ON SITE.  
2. G.C. TO COMMUNICATE WITH CAMPUS FACILITY MANAGER FOR STAGING LOCATION, PORTA POTTY LOCATION AND GENERAL BOUNDARY / SECURITY FENCING .  
3. OWNER TO COORDINATE & PAY FOR REQUIRED STATE / LOCAL PERMITS. DEQ MONTANA: <https://deq.mt.gov/Permitting>  
4. G.C. TO COORDINATE THE CONNECTION OF UTILITIES WITH PROVIDERS.

#### GENERAL NOTES

1. DIMENSIONS ARE SHOWN ON THE DRAWINGS. DO NOT SCALE THE DRAWINGS.
2. THE CONTRACTOR IS RESPONSIBLE FOR PROVIDING ALL NEW MATERIALS (JUNO) & QUALIFIED CRAFTPERSONS TO COMPLETE THE WORK.
3. CONSTRUCTION DOCUMENTS SHOW THE DESIGN INTENT OF THE PROJECT & MAY NOT SHOW MINOR DETAILS OF PROPOSED INSTALLATION. THE INCLUSION OF THESE MINOR DETAILS IS IMPLIED TO PROVIDE A COMPLETE PROJECT & ARE TO BE INCLUDED AS A PART OF A BID.
4. ALL HEIGHTS ARE DIMENSIONED FROM THE TOP OF FINISHED FLOOR (AFF) UNLESS NOTED OTHERWISE.
5. IT IS THE CONTRACTOR'S RESPONSIBILITY TO INSPECT EXISTING CONDITIONS PRIOR TO PROCEEDING WITH EACH INSTALLATION OR PART OF THE WORK. DISCREPANCIES MUST BE REPORTED TO THE ARCHITECT PRIOR TO PROCEEDING.
6. THE CONTRACTOR IS TO COORDINATE THE INSTALLATION OF MATERIALS & WORK OF OTHERS WHO ARE NOT SUB-CONTRACTORS TO THE GC, YET ARE REQUIRED IN PROVIDING A COMPLETED PROJECT. AREAS OF WORK REQUIRING COORDINATION INCLUDE BUT ARE NOT LIMITED TO THOSE INDICATED AS NIC ON THE CONSTRUCTION DOCUMENTS.
7. REFER TO STRUCTURAL, MECHANICAL & ELECTRICAL DRAWINGS FOR COORDINATION OF WORK.
8. ALL DIMENSIONS ARE FROM FACE OF STUD UNLESS NOTED OTHERWISE. THE CONTRACTOR SHALL VERIFY ALL DIMENSION CONDITIONS PRIOR TO CONSTRUCTION.
9. IN THE CASE OF CONTRADICTIONS BETWEEN DRAWINGS OR BETWEEN DRAWINGS & SPECIFICATIONS, ASSUME THE MORE COSTLY APPROACH FOR BIDDING PURPOSES. BRING ALL CONTRADICTIONS TO THE ATTENTION OF THE ARCHITECT
10. THE CONSTRUCTION DOCUMENTS CONSIST OF THE CONSTRUCTION DRAWINGS & SPECIFICATIONS INCLUSIVELY. SOME ITEMS MAY BE SHOWN ONLY ON THE DRAWINGS OR INDICATED ONLY IN THE SPECIFICATIONS. FOR EXAMPLE, THE SPECIFICATIONS MAY SAY TO PAINT ALL EXPOSED STRUCTURAL STEEL, BUT THIS WILL NOT BE CALLED OUT ON ALL OF THE DRAWINGS.
11. 3-D VIEWS MAY BE USED THROUGHOUT THE CONSTRUCTION DOCUMENTS. 3-D VIEWS ARE SHOWN TO CLARIFY CONDITIONS THAT CANNOT BE SHOWN IN OTHER VIEWS. 3-D VIEWS MAY NOT SHOW ALL DETAILS REQUIRED TO COMPLETE THE AREA. REFER TO DETAILS AT ADJACENT AREAS AS NECESSARY OR ASK THE ARCHITECT PRIOR TO BIDDING.

#### REFERENCE SYMBOLS

1 View Name  
1/8" = 1'-0" SCALE REF: 1/A000 REFRENCING SHEET

5 A3-8 BUILDING SECTIONS SEE DRAWINGS EX: SHEET A3-8, DETAIL 5

3 A5-2 WALL SECTIONS SEE DRAWINGS EX: SHEET A5-2, DETAIL 3

4 A7-1 EXTERIOR ELEVATION SEE DRAWINGS EX: SHEET A7-1, DETAIL 4

1 A1-1 CONSTRUCTION DETAIL SEE DRAWINGS EX: SHEET A1-1, DETAIL 1

4 A7-1 INTERIOR ELEVATION SEE DRAWINGS EX: SHEET A7-1, DETAIL 4 & 5

101A DOOR SYMBOL SEE DOOR SCHEDULE

A WINDOW SYMBOL SEE WINDOW TYPES

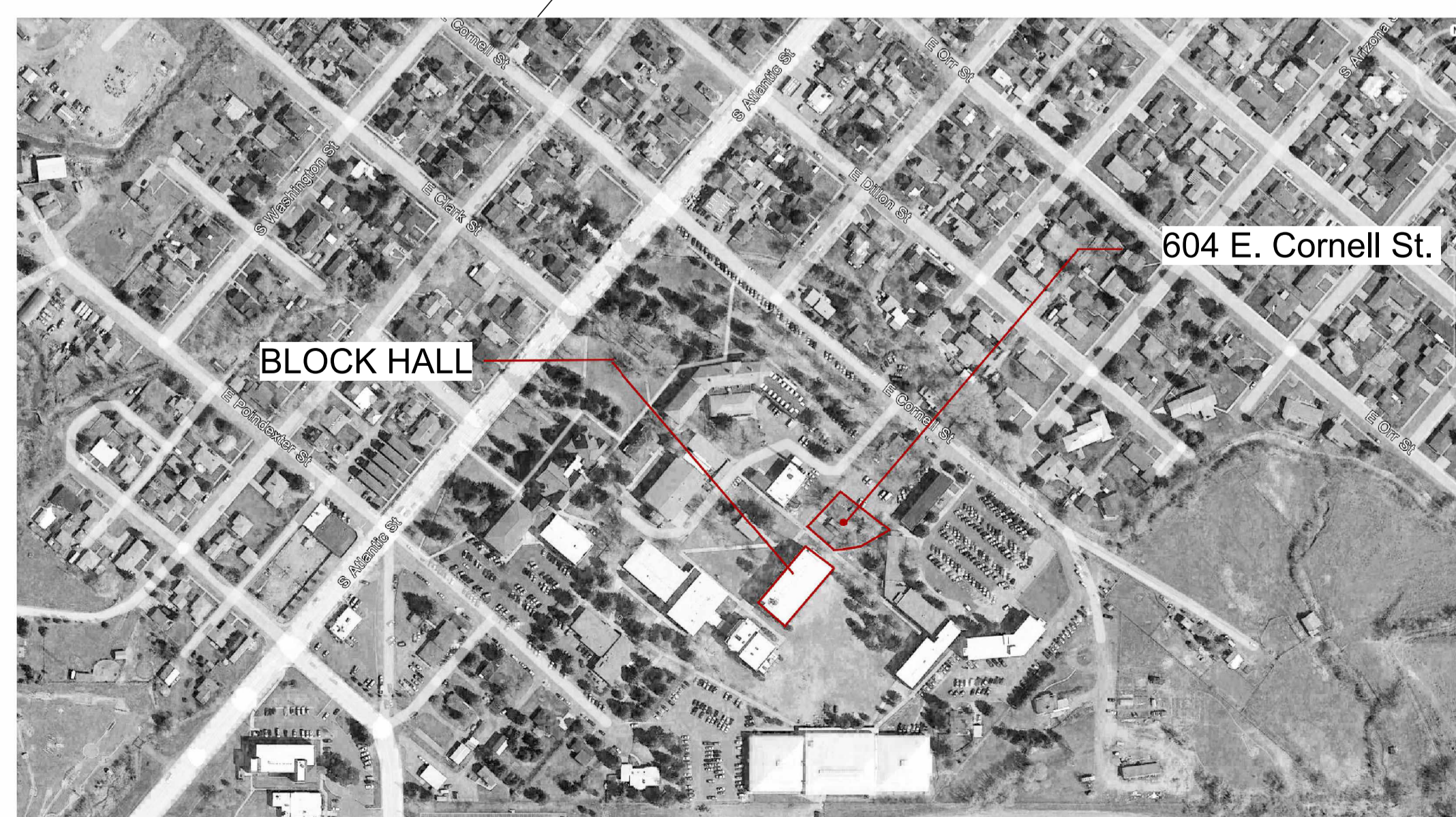
Room name 101 ROOM SYMBOL EX: 101 - FIRST FLOOR

E2p 10' - 0" WALL/PARTITION TYPE SYMBOL SEE WALL/PARTITION TYPES

1 A GRID LINES: LETTERS LEFT TO RIGHT NUMBERS BOTTOM TO TOP

Name Elevation BENCHMARK

#### VICINITY MAP



#### ABBREVIATIONS

(1) & #	QUANTITY AND AT NUMBER	EA EIFSEXTERIOR INSULATION FINISH SYSTEM	EACH EXPANSION JOINT	MAT MAX MECH	MATERIAL MAXIMUM MECHANICAL	SCHED SACT	SCHEDULE SUSPENDED ACOUSTICAL CEILING TILE SOAP DISPENSER
AB	ANCHOR BOLT	EJ	ELEVATION - HEIGHT	MDF	MEDIUM DENSITY FIBER BOARD	SD	SQUARE FEET
A/C	AIR CONDITIONING	ELEC	ELECTRICAL	MFR	MANUFACTURER	SHT	SHEET
ACT	ACOUSTICAL CEILING TILE	EQ	EQUAL	MIL	MILLIMETER	SHTG	SHEATHING
ADDM	ADDENDUM	(E)EXIST	EXISTING	MIN	MINIMUM	SHWR	SHOWER
ADJ	ADJACENT	ETR	EXISTING TO REMAIN	MIR	MIRROR	SIM	SIMILAR
AFF	ABOVE FINISHED FLOOR	EXT	EXTERIOR	MISC	MISCELLANEOUS	SIP	STRUCTURAL INSULATED PANEL
AHU	AIR HANDLING UNIT	FD	FLOOR DRAIN	MTL	MASONRY OPENING	SND	SANITARY NAPKIN DISPOSAL SPECIFICATIONS
ALT	ALTERNATE	FDN	FOUNDATION	OC or O.C.	ON CENTER	SS	STAINLESS STEEL
ALUM	ALUMINUM	FF	FINISH FLOOR	N/A	NOT APPLICABLE	STD	STANDARD
ARCH	ARCHITECTURAL	FDN	FOUNDATION	NIC	NOT IN CONTRACT	STL	STEEL
BC	BRICK COURSE	FEC	FIRE EXTINGUISHER CABINET	NTS	NOT TO SCALE	STOR	STORAGE
BO	BOTTOM OF BUILDING	FIN FLR or FF	FINISHED FLOOR	OP	ON CENTER	STRUCT	STRUCTURAL
BLKG	BLOCKING	FLR	FLOOR	OPNG	OPENING	SUB FLR	SUBFLOOR
BTWN	BETWEEN	FOF	FACE OF FINISH	OPP	OPPOSITE	T&G	TONGUE AND GROOVE
BOW	BOTTOM OF WALL	FOM	FACE OF MASONRY	PAF	POWER ACTUATED FASTENER	TJI	TRUSS JOIST INCORPORATED
BU	BUILT UP	FOS	FACE OF STUD	PART BD	PARTICLE BOARD	TO	TOP OF
CL	CENTERLINE	FT	FOOT	PERP	PERPENDICULAR	TOB	TOP OF BEAM
CB	CATCH BASIN	FTG	FOOTING	PFM	PREFINISHED METAL	TOP	TOP OF PLATE
CC	CENTER TO CENTER	GB	GRAB BAR	PL	PLATE	TO FTG	TOP OF FOOTING
CDX	EXTERIOR GRADE PLYWOOD	GALV	GALVANIZED	PLAM	PLASTIC LAMINATE	TOS	TOP OF STEEL
CF	CUBIC FEET	GLU LAM or GLB	GLUE LAMINATED BEAM	PLWD	PLYWOOD	TOW	TOP OF WALL
CH	CERAMIC TILE	GWB	GYP SUM WALL BOARD	PNL	PANEL	TPD	TOILET PAPER DISPENSER
CJ	CHANNEL	HD BD	HARD BOARD	PSF	POUNDS PER SQUARE FOOT	T	TREAD
CJ	CONTROL JOINT	HM	HOLLOW METAL	PSI	POUNDS PER SQUARE INCH	TS	TUBULAR STEEL
CLG	CEILING	HORIZ	HORIZONTAL	PSL	PARALLEL STRAND LUMBER	TYP	TYPICAL
CLR	CLEAR	HP	HIGH POINT	PT	POINT	UG	UNDERGROUND
COL/COLS	CONCRETE MASONRY UNIT COLUMN/COLUMNS	HR	HOUR	P.T.	PRESSURE-TREATED	UNO	UNLESS NOTED OTHERWISE
CONC	CONCRETE	HT	HEIGHT	PTD	PAPER TOWEL DISPENSER	VCT	VINYL COMPOSITION TILE
CONST	CONSTRUCTION	HTG	HEATING	PVC	POLYVINYLCHLORIDE	VERT	VERTICAL
CONT	CONTINUOUS	HVAC	HEATING, VENTILATING, AIR CONDITIONING	QTY	QUANTITY	VB	VAPOR BARRIER
COORD	COORDINATE	IN	INCH	R	RADIUS, RISER	VIF	VERIFY IN FIELD
CTR	CENTER	INFO	INFORMATION	RD	ROOF DRAIN	W	WITH
CTRD	CENTERED	INSUL	INSULATION	REF	REFERENCE	WC	WATER CLOSET
DBL	DOUBLE	INT	INTERIOR	REFG	REFRIGERATOR	WD	WOOD
DI	DIAMETER	JST	JOIST	REINF	REINFORCING	WNDW	WINDOW
DIA	DIAMETER	JT	JOINT	REQD	REQUIRED	W/O	WITHOUT
DIM	DIMENSION	RES	RESILIENT	RES	RESILIENT	WP	WATERPROOF
DN	DOWN	RH	ROUGH HATCH	RM	ROUGH OPENING	WR	WEATHER RESISTANT
DR	DOOR	LB	LINEAL FEET	RO	ROUGH OPENING	WRB	WEATHER RESISTIVE BARRIER
DS	DOWNSPOUT	LTWT	LIGHTWEIGHT			WT	WEIGHT
DET	DETAIL	LVL	LAMINATED VENEER LUMBER			WWF	WELDED WIRE FABRIC
DWG	DRAWING						

#### GENERAL

G1-0 COVER PAGE, GENERAL INFORMATION CODE  
G2-0 CODE INFORMATION

#### CIVIL

C.1 SITE LAYOUT  
C.2 SITE GRADING PLAN

#### SHEET INDEX

##### ARCHITECTURAL

A1-1 WALL, CEILING & ROOF ASSEMBLIES  
A1-2 DOOR & WINDOW SCHEDULES & ELEVATIONS  
A2-1 SITE PLAN  
A3-1 FIRST FLOOR PLAN  
A3-2 REFLECTED CEILING PLAN  
A3-3 ROOF PLAN  
A4-1 EXTERIOR ELEVATIONS  
A4-2 BUILDING SECTIONS  
A4-3 BUILDING SECTIONS  
A5-1 WALL SECTIONS  
A5-2 WALL SECTIONS  
A6-1 PLAN DETAILS  
A6-2 EXTERIOR DETAILS  
A6-3 EXTERIOR DETAILS  
A6-4 EXTERIOR DETAILS / WINDOW DETAILS  
A6-5 DETAILS  
A6-6 STAIR AND RAILING DETAILS  
A6-7 DOOR DETAILS  
A7-1 ENLARGED PLANS, INTERIOR ELEVATIONS & DETAILS  
A7-2 ENLARGED PLANS, INTERIOR ELEVATIONS & DETAILS Copy 1  
A8-1 STAIRS, RAMPS, ELEVATORS & SPECIAL CONDITIONS

#### STRUCTURAL

S0.1 GENERAL STRUCTURAL NOTES  
S0.2 GENERAL STRUCTURAL NOTES  
S0.3 STATEMENT OF SPECIAL INSPECTIONS  
S1.1 MAIN FLOOR STRUCTURAL PLAN  
S1.2 UPPER FLOOR STRUCTURAL PLAN  
S1.3 ROOF STRUCTURAL PLAN  
S5.1 STRUCTURAL DETAILS  
S5.2 STRUCTURAL DETAILS  
S7.1 FOUNDATION DETAILS  
S7.2 FOUNDATION DETAILS  
S7.3 TYPICAL WOOD DETAILS  
S7.4 TYPICAL WOOD DETAILS

#### ELECTRICAL

E0-1 ELECTRICAL COVER SHEET / SCHEDULES  
E2-1 POWER AND SPECIAL SYSTEMS PLAN - LEVEL 1  
E2-2 POWER AND SPECIAL SYSTEMS PLAN - LEVEL 2  
E3-1 LIGHTING PLAN - LEVEL 1  
E3-2 LIGHTING PLAN - LEVEL 2  
E4-0 ELECTRICAL DETAILS

#### MECHANICAL

M0-1 MECHANICAL COVER SHEET / MECHANICAL SCHEDULES  
M2-1 HVAC PLAN - LEVEL 1  
M3-1 MECHANICAL PIPING PLAN - LEVEL 1  
M4-0 MECHANICAL DETAILS

CAMPUS STORAGE/WAREHOUSE  
BUILDING A&E #: 2022-04-03-01  
604 E. Cornell St., Dillon Mt.

DOWLING ARCHITECTS  
734 N. Last Chance Gulch | Helena, MT 59601 | 406.457.5470  
www.dsi-ar.com

COVER SHEET

PROJECT #: 23-647

ISSUE DATES:


DRAWN BY: DSA

# G1-0

07.26.23