

# Two-Year Leadership Panel

**Montana Board of Regents**  
**March 2024**

# MONTANA'S EDUCATION ENGINE



“The Two-year Colleges in the MUS embody a **comprehensive community college mission** committed to providing transfer education through the associates degree, workforce development including certificates and applied science degrees, developmental and adult basic education, lifelong learning opportunities, and community development. These institutions provide affordable, open access admissions that will **allow opportunities for all Montanans to access higher education.**”

Rapid  
Non-credit  
Training

Transfer  
Education

Dual  
Enrollment &  
Secondary  
Pathways

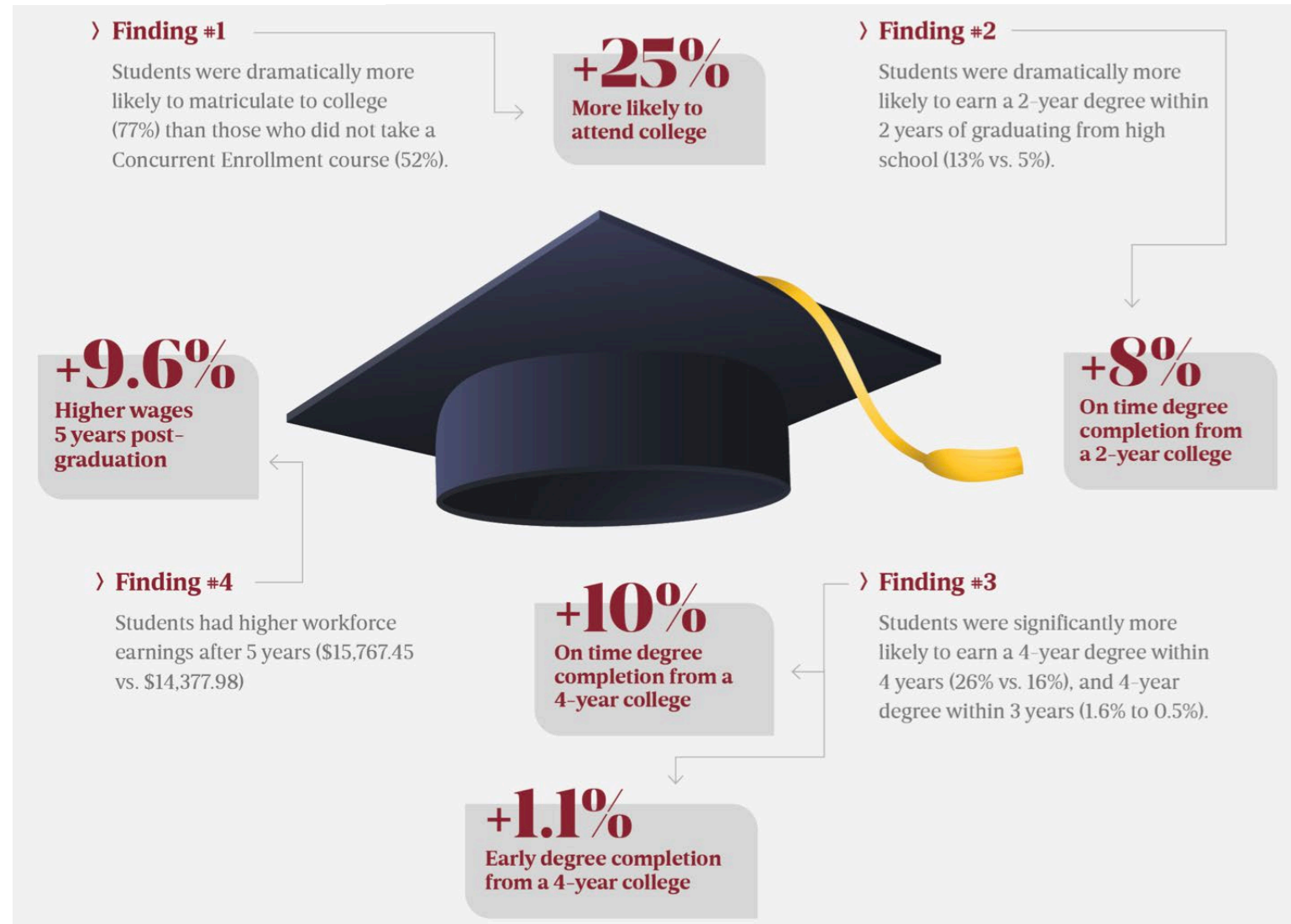
Skilled  
Workforce  
Education

# Does Concurrent Enrollment Improve College Access, Success, Time-To-Degree and Earnings?

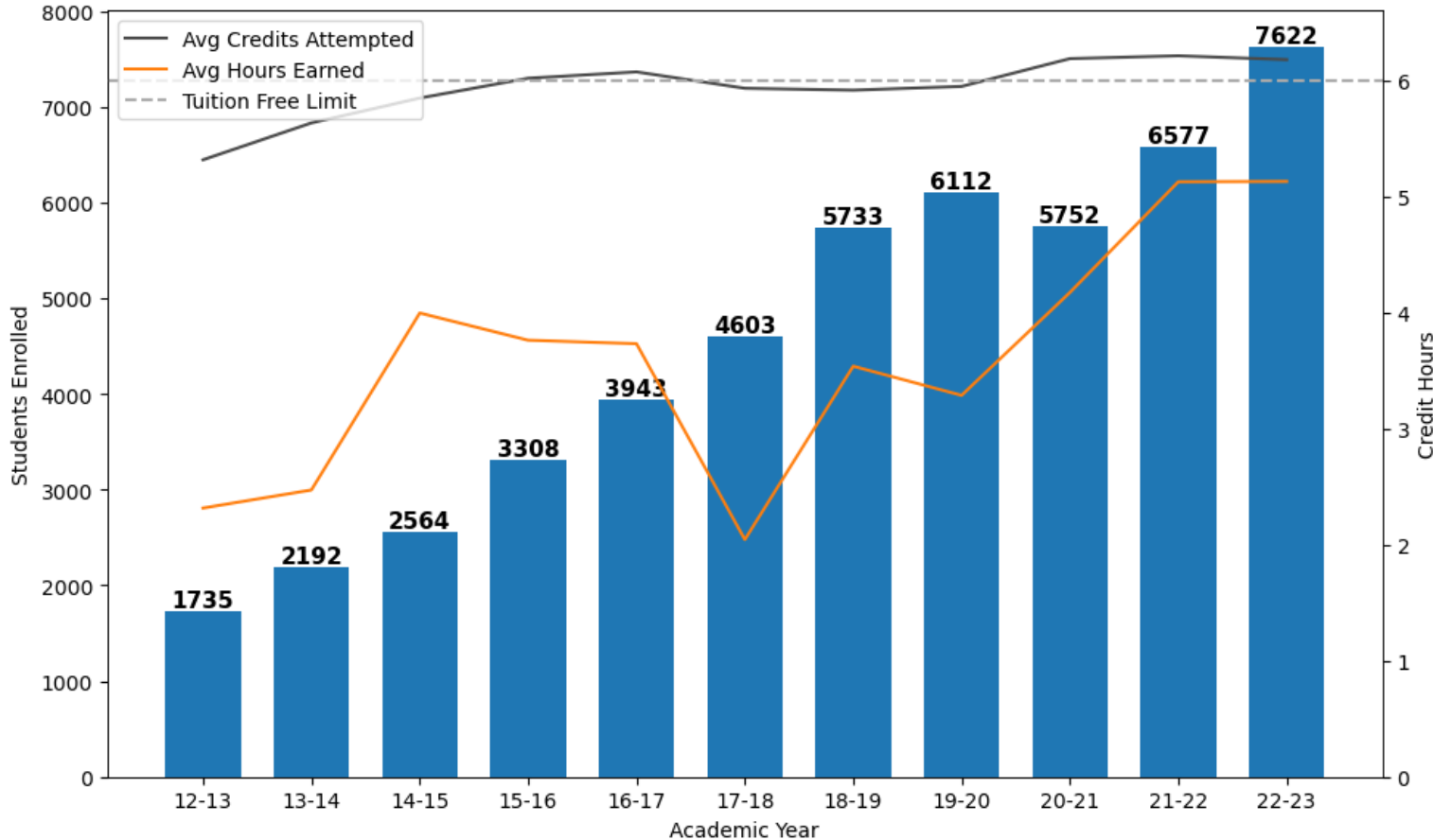


Evaluation of five statistically-matched cohorts of CO 11<sup>th</sup> grade students found dual enrollment was associated with:

- College matriculation
- On-time college graduation
- Higher earnings



# Dual Enrollment Count by Year



**16.4% enrollment growth per year**  
**15.9% increase from 2021-22**

## 2014

- ~ **1 in 10** MT high school students participate in dual enrollment.
- DE makes up **14%** of 2-year Spring headcount enrollment.

## 2023

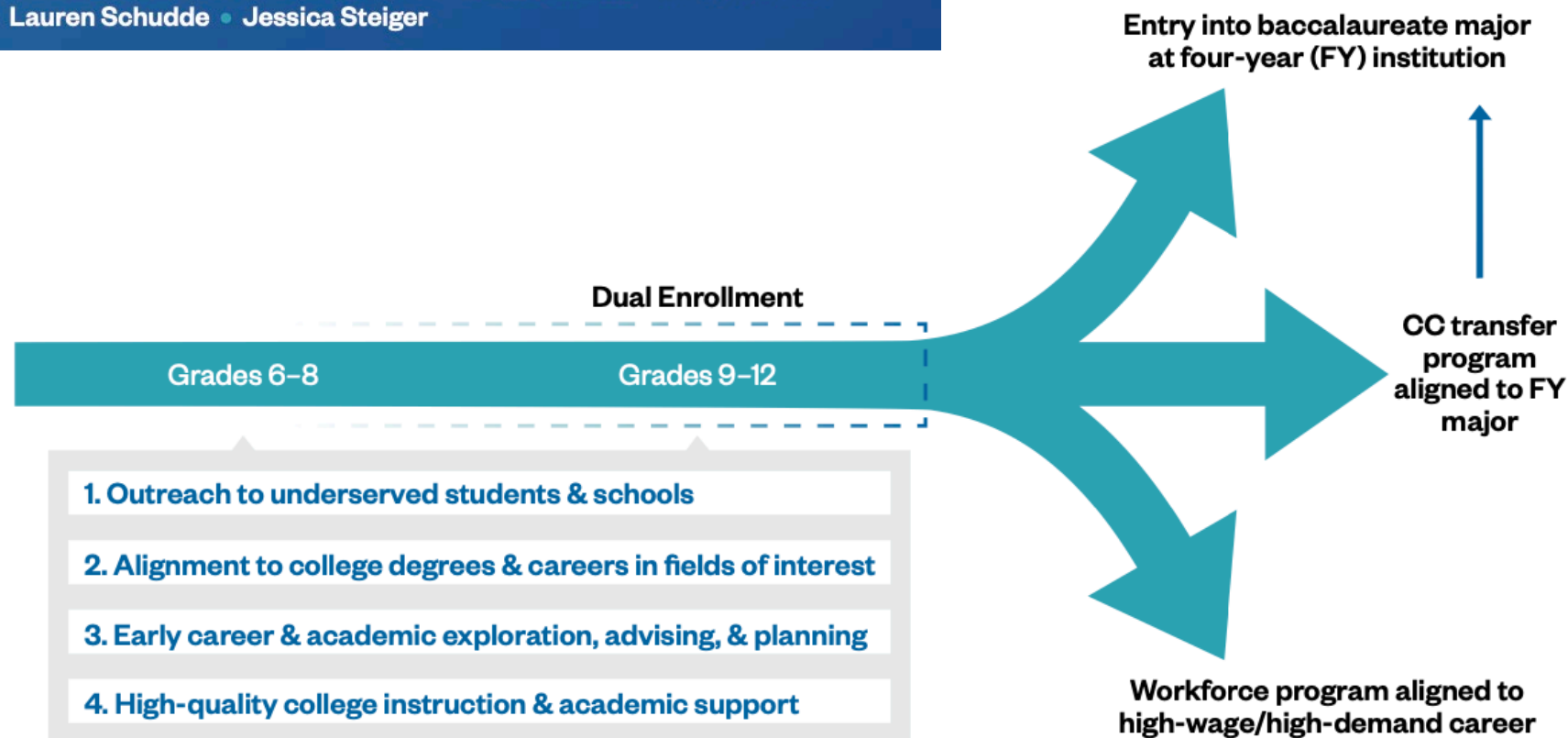
- ~ **1 in 3** MT high school students participate in dual enrollment.
- DE makes up **46%** of 2-year Spring headcount enrollment.

# Redesigning Dual Enrollment as a Purposeful Pathway to College and Career Opportunity

John Fink • Sarah Griffin • Aurely Garcia Tulloch • Davis Jenkins • Maggie P. Fay • Cat Ramirez • Lauren Schudde • Jessica Steiger

**CCRC** COMMUNITY COLLEGE RESEARCH CENTER

TEACHERS COLLEGE, COLUMBIA UNIVERSITY



# Career Development and Interpersonal Skills



## Course Description

Career Development and Interpersonal Skills is designed to prepare students for the habits and attitudes needed to perform effectively in the job market by developing interpersonal and transferrable non-cognitive skills needed to be successful in various career fields.

In this course, students create a working resume and cover letter and will develop interviewing and networking skills.

## Course Objectives

- Students will understand and demonstrate interpersonal attributes employers are seeking from successful employees in the workplace.
- Students will create a working resume, cover letter, and career action plan.
- Students will discern best interview practices and techniques.
- Students will identify two to three professionals in a specific career field and develop a networking plan.
- Students will identify resources available on campus and within the community that allow an individual to identify career pathways and how to connect academic majors and programs with various career opportunities.
- Students will identify characteristics of emotional intelligence that allow them to manage their emotions and recognize and influence the emotions of those around them.

## Course Topics

- Career Exploration and Career Action Planning
- Emotional Intelligence
- Time Management
- Effective Communication
- Conflict Resolution
- Teamwork
- Professionalism
- Cover Letters/Resumes
- Networking
- Creative Thinking/ Problem Solving
- Interviewing Skills
- Mock Interviews

1

**Outreach** to underserved students and schools

- Focus outreach on underserved high schools, students, and communities.
- Start outreach before high school.
- Leverage community connections to build awareness.
- Build trust with and educate parents and families.

2

**Align** DE course offerings to college degrees and careers

- Inventory current DE offerings.
- Map DE offerings to college degree programs in fields of interest.
- Embed DE offerings in career-connected high school programs.

3

**Advise** students to explore interests and develop plans

- Use DE to showcase college programs and support exploration.
- Help students develop a college program plan and provide checkpoint advising.
- Coordinate advising roles across sectors.

4

**Support** students by delivering high-quality instruction

- Scaffold coursework and frontload supports.
- Respond quickly when students are struggling.
- Provide additional, structured support for online classes.
- Support DE instructors and monitor quality.

FRENCHTOWN  
HIGH SCHOOL



## The Bronc Fast Track

- ❖ Embedded map for Frenchtown HS students to complete 30-37 hours of dual credit prior to graduation.
- ❖ Includes completing a general education certificate, which is transferrable across the MUS.



# Great Falls College | Education Access & Opportunity through Dual Enrollment

- On Campus | Welding and Paris Gibson
- Online | Rural Student and EMT Courses
- Concurrent | Make Your Credits Count



Save Money.



Save Time.



Ease In.



**GREAT FALLS COLLEGE**  
MONTANA STATE UNIVERSITY



# Barriers & Opportunities



Expanding Access



Clearer Pathways to Credential Attainment



Sustainable Funding to Ensure Student & Institution ROI

# Questions?

**Ron Slinger, President, EdD, Miles Community College**

**Tom Gallagher, EdD, AVP for Workforce Development & Two-year Education**

**Stephanie Erdmann, PhD, Dean & CEO, Great Falls College**