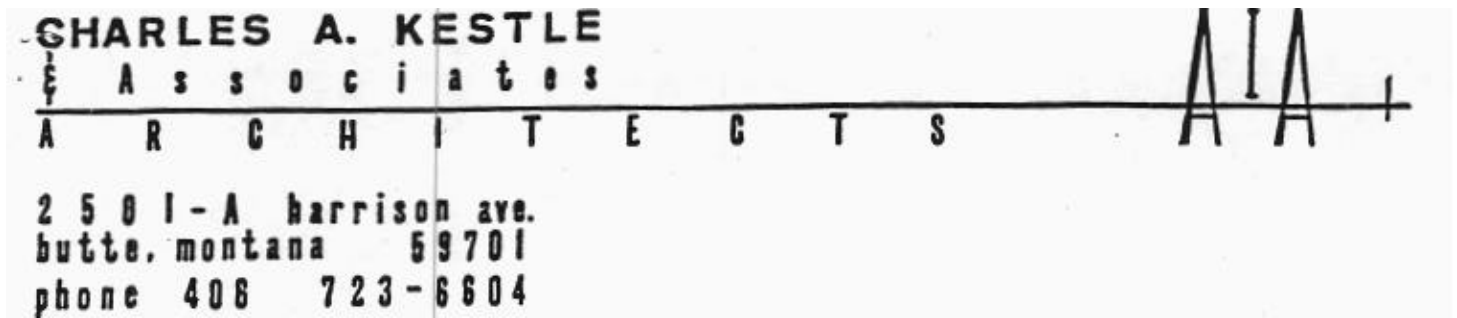


ITEM 111-1501 -R0501 ATTACHMENT



March 22, 2000

Re: Proposed Weight Room Expansion
HPER Complex
Montana Tech of the U of M

Bob Green
Athletic Director
HPER Complex
Montana Tech
Butte, Montana 59701

Dear Bob,

At your request we have reviewed the above-named facility and proposed project. The project involves inserting a second floor into a currently under used space in the HPER complex which had been originally designed for 2 racquetball courts. The new space would then be used to house additional weight room equipment thereby expanding the currently overcrowded facilities. The first floor would continue to house current uses such as judo and wrestling. A corner of the room will be devoted to a climbing wall that extends the full height of the space.

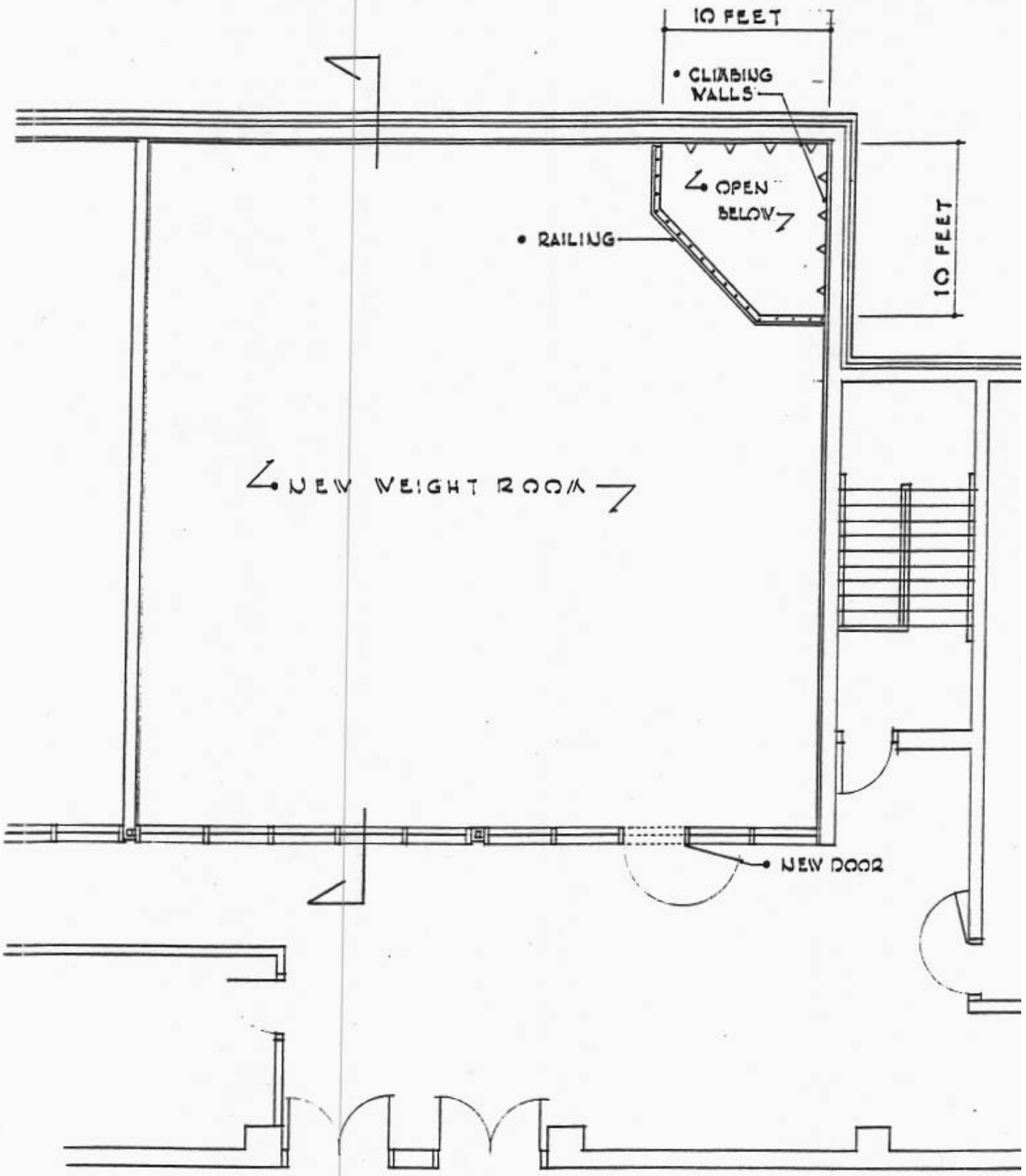
The project would require a new floor system, ceilings, additional lighting, expanded heating and ventilation, doorways, new finishes, and miscellaneous structural modifications to support the floor system. In addition, openings in the existing exterior wall will need to be cut in order to get the beams, joists and columns into the building. These openings could later be used for exhaust air vents.

Enclosed you will find preliminary drawings showing the basic concept for this project. Please review these drawings and the program as outlined above to see if we are complete in our understanding of the project. We would welcome any comments or questions. After your review the next step will be development of some preliminary cost estimates. The task of inserting a new structure into an existing building is not easy. However, we will explore as many ways to keep costs down as possible.

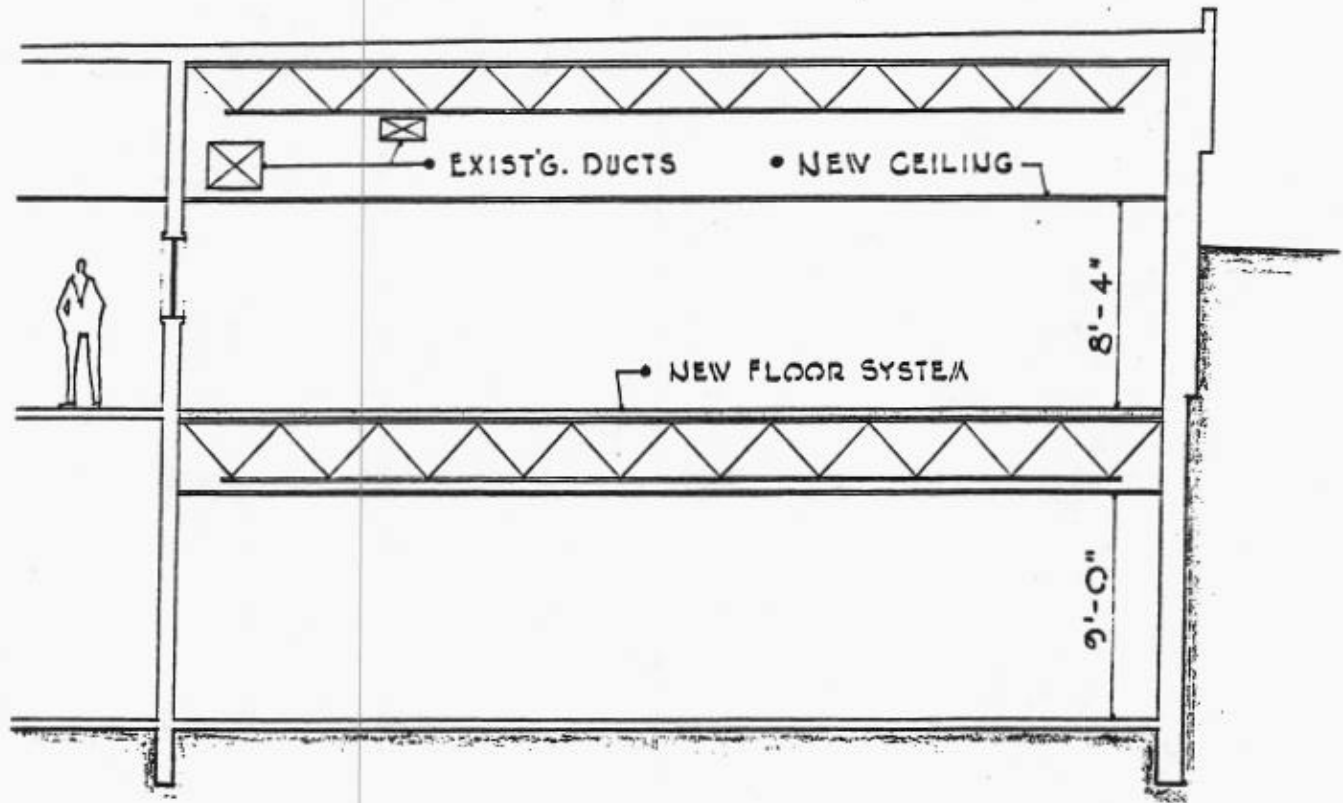
Sincerely,

Charles H. Kestle, AIA, Architect

encl. 2



FLOOR PLAN SCALE: 1/8" = 1'-0"



SECTION

SCALE: 1/8" = 1'-0"

CHARLES A. KESTLE

Associates

ARCHITECTS

AI A

2501 - A Harrison ave.
Butte, Montana 59701
phone 406 723-6604

July 26, 2000

Re: Weight Room Expansion
HPER Complex
Montana Tech of the U of M

Bob Green
Director of Athletics
HPER Complex
Montana Tech
Butte, MT 59701

Dear Bob:

The following is to confirm our recent telephone conversation and to give some follow-up.

PRELIMINARY PLANS & SCOPE

- The Preliminary Layout Dated 3/22/00 will serve to define the project concept.
- Resilient/Impact Flooring will be furnished and installed by Montana Tech.
- Climbing Wall inserts will be installed by Montana Tech.
- Basic, Functional Remodeling will be included in a construction contract.
- Architect/Engineer will develop construction documents to permit a standard competitive bidding process as required for projects utilizing public monies.

PRELIMINARY BUDGET

- General
 - Include a facility to accommodate the program functions.
 - Include Structural Systems as required.
 - Include Finish Systems as required and possible within project budget.
 - Include Utility and Environmental Systems as required and possible within project budget.
- Budget Guide-lines & Factors
 - The final cost of any project becomes the bid of the lowest responsible bidder.
 - The final cost includes the provisions of project elements as noted above.
 - The final cost reflects any special project complexities such as the need to penetrate existing walls, etc.
 - The final cost also reflects the bidding climate at any particular bid date; variable week to week and unpredictable in today's construction market.

To: Bob Green
Re: Weight Room Expansion
HPER Complex

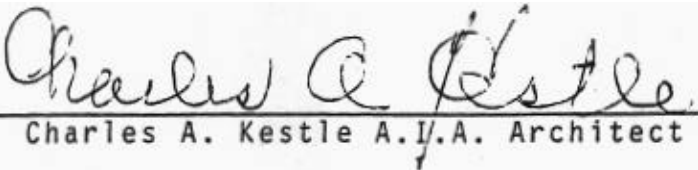
July 26, 2000

- Proposed Budget Approach
 - To permit preliminary project approval, including submittal to the student body, the following is recommended:-
 - Establish \$200,000.00 as the Project Budget to include construction, permits and fees.
 - Develop Construction Documents with sufficient Alternates to provide usable spaces with the maximum level of Environmental Systems and Finishes consistent with the bids received.

We look forward to working with you on this project. If the project does receive student approval, we will proceed with development of the contract documents.

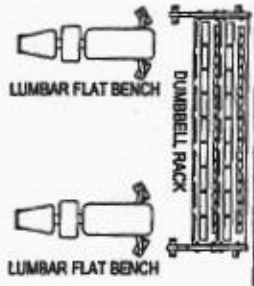
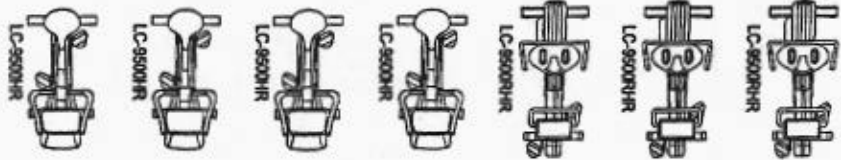
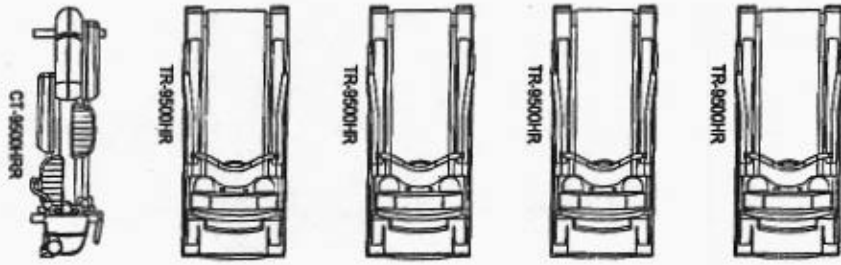
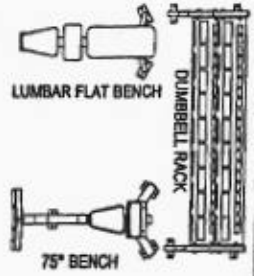
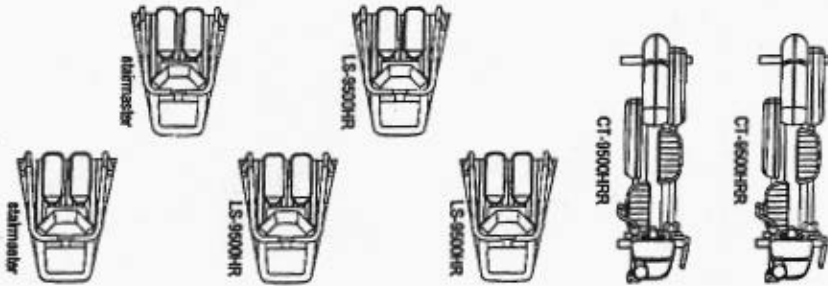
Very truly yours,

CHARLES A. KESTLE A.I.A. & ASSOCIATES

By 
Charles A. Kestle A.I.A. Architect
CAK:j



4	9500HR	TREADMILL
3	9500HR	CROSS-TRAINER
3	9500HR	RECUMBENT BIKE
4	9500HR	UPRIGHT BIKE
3	9500HR	STAIRCLIMBER
3		LUMBAR FLAT BENCH
2		LUMBAR FLAT BENCH (EXISTING WEIGHTROOM)
1		INCLINE BENCH 30 DEGREE
1		INCLINE BENCH 55 DEGREE
1		UTILITY BENCH
1		UTILITY BENCH (EXISTING WEIGHTROOM)
2		DUMBBELL RACK DOUBLE TIER WITH DUMBBELLS (5-50)
1		UNI-LATERAL LEG PRESS (EXISTING WEIGHTROOM)
1		GROUND BASE DEADLIFT (EXISTING WEIGHTROOM)



41' x 41'

**Facility Layout For
Montana Tech.**

Sales Contact: Ann Reno
 Date: August 16, 2000 Scale: 1/4" = 1'-0"
 Layout Version: 1.02

