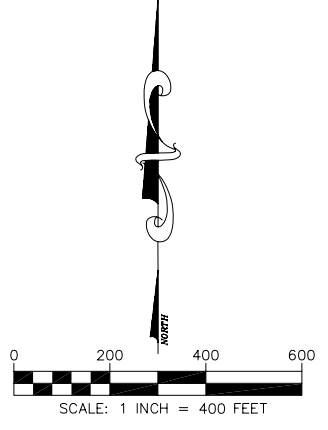
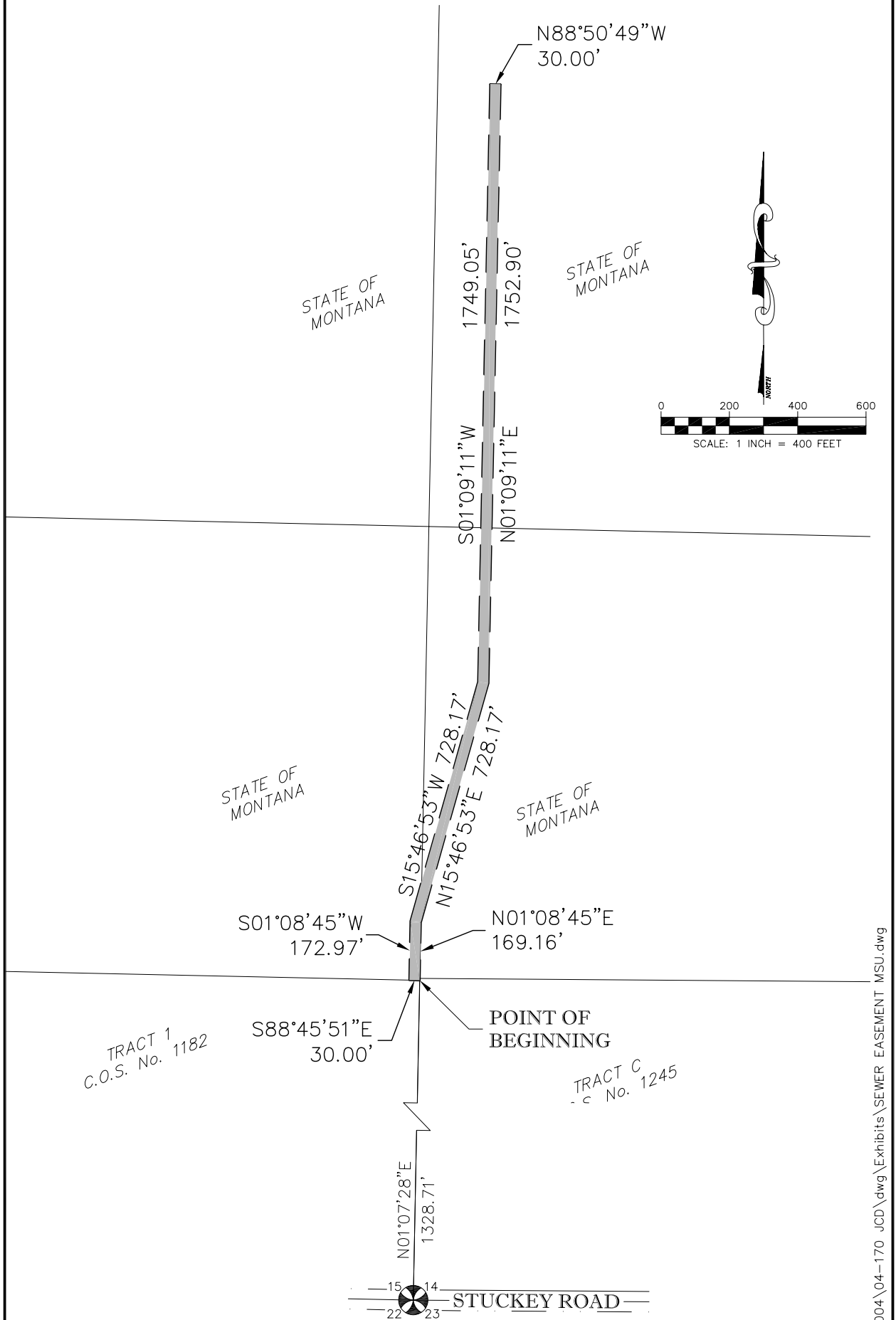


EXHIBIT

30 FOOT WIDE PUBLIC UTILITY EASEMENT
 LOCATED IN THE SOUTHEAST ONE-QUARTER AND
 THE NORTHEAST ONE-QUARTER OF SECTION 15,
 AND THE NORTHWEST ONE-QUARTER OF SECTION 14,
 TOWNSHIP 2 SOUTH, RANGE 5 EAST, PRINCIPAL MERIDIAN MONTANA,
 CITY OF BOZEMAN, GALLATIN COUNTY, MONTANA



L: \2004\04-170_JCD\dwg\Exhibits\SEWER EASEMENT MSU.dwg

1/4	Sec.	T.	R.
<input checked="" type="checkbox"/>	7	2S	6E



Civil Engineering
 Land Surveying
 Geotechnical Engineering
 Structural Engineering

32 DISCOVERY DRIVE
 BOZEMAN, MT 59718
 PHONE (406) 582-0221
 FAX (406) 582-5770

PROJECT SURVEYOR: KIT	SHEET 2 OF 2
DRAWN BY: KWO	PROJECT No. 03-007
REVIEWED BY: GLF	Exhibit.dwg
DATE: 07/17/03	