

Lewis Hall New Elevator & ADA Upgrades

CD-17

Montana State University
Project Cost: \$4,600,000

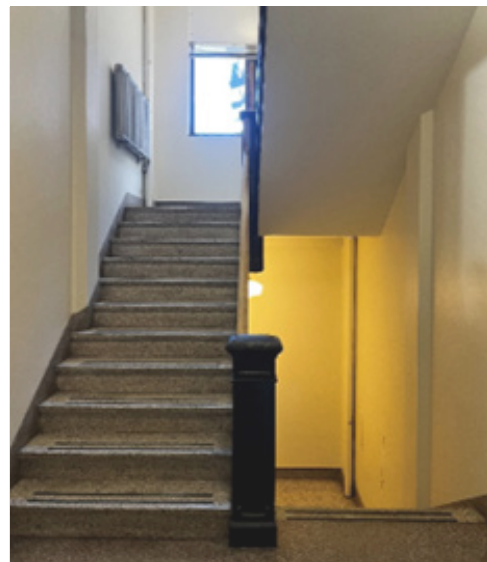


Long Range Building Plan Request

The project will ensure complete ADA access for students to the currently inaccessible 4-story building by adding an elevator.

Building Statistics

- Year Built: 1922
- Square Footage: 43,884
- Current Facility Index: 23.5%
- Building Use: Classroom, Laboratory, and Office.



Existing Condition

- The 4-floor building is inaccessible, having no elevator, ramps, accessible restrooms, instructional spaces, or offices.
- 39 courses have been relocated from Lewis Hall due to ADA access since 2016.

Benefit to MSU

- Complete ADA access to critical instructional laboratory space utilized by several programs on campus.
- Eliminate the need to relocate students from Lewis Hall due to ADA access.
- Potential increase in classroom utilization for better student experience.